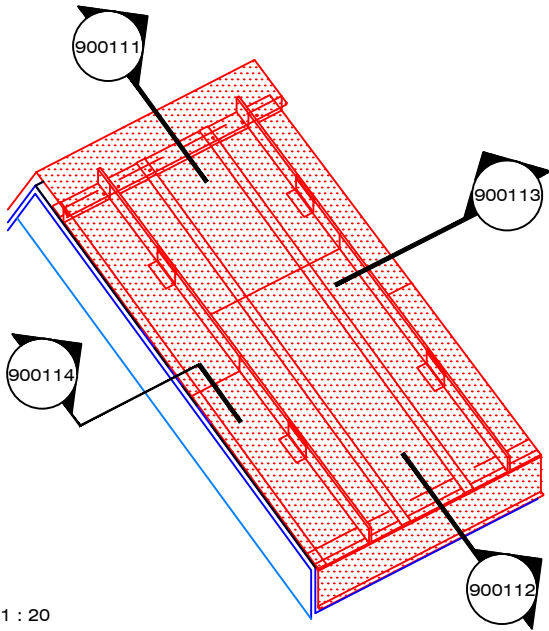
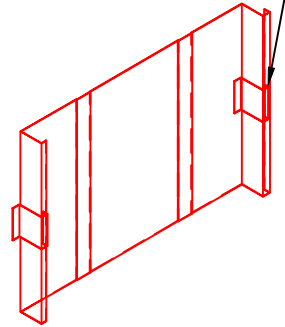


## ROOF USE



Scale: 1 : 20

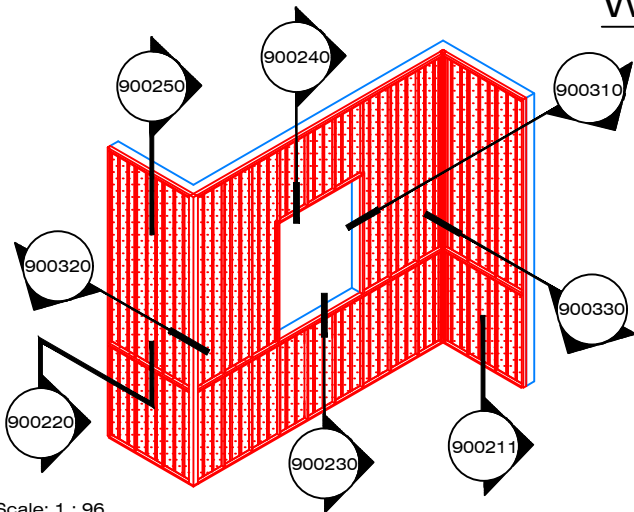
Clip-fastener  
See recommendations  
900500+900501



**DOUBLE** crimping + requires full surface support (such as plywood or other composition) as well as compatible waterproof membrane. (Hook min 1 ½")

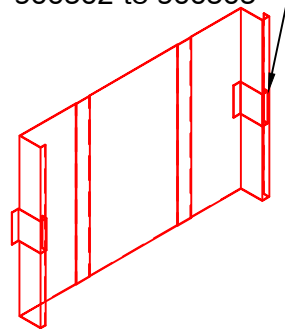
Scale: 1 : 12

## WALL USE



Scale: 1 : 96

Clip-fastener  
See recommendations  
900502 to 900505



**SIMPLE** crimping + requires full surface support (such as plywood or ribbed metal sheathing). (Hook min 1")

Scale: 1 : 12

### DESCRIPTION OF PT-900 PANFAB ROOF PANEL MODEL 30:

- 16" wide rolled roof sheeting, 1 ½" high joint, 2 grooves, "clip" style punctual fasteners and mechanical sealing by "piccolo".
- For use on roofs: max length 20'-0", minimum manufacturing 6'-0", minimum slope 1.5:12.
- For use on wall (vertical direction): max length 15'-0" ; minimum manufacturing 6'-0".
- For use on wall (horizontal direction): max length 20'-0" ; minimum manufacturing 6'-0".
- Material: Aluminum 0.8mm thickness, Special alloy 5754H42, D-MAX pre-painted finish, PVDF Kynar 500 70% such as Duranar XL.
- Choice of 7 colours : White RAL9016, Jupiter RAL9006, Neptune, Alpha Centauri, Charcoal, Rigel-2 and Black RAL9005.

LES INDUSTRIES



49, boul. de la Seigneurie Est  
Blainville (Québec) J7C 4G6

Phone : (450) 430-3029

[www.panfab.com](http://www.panfab.com)

Project:

PT-900 PANFAB ROOF MODEL 30

Title:

ISOMETRIC VIEW

Scale:

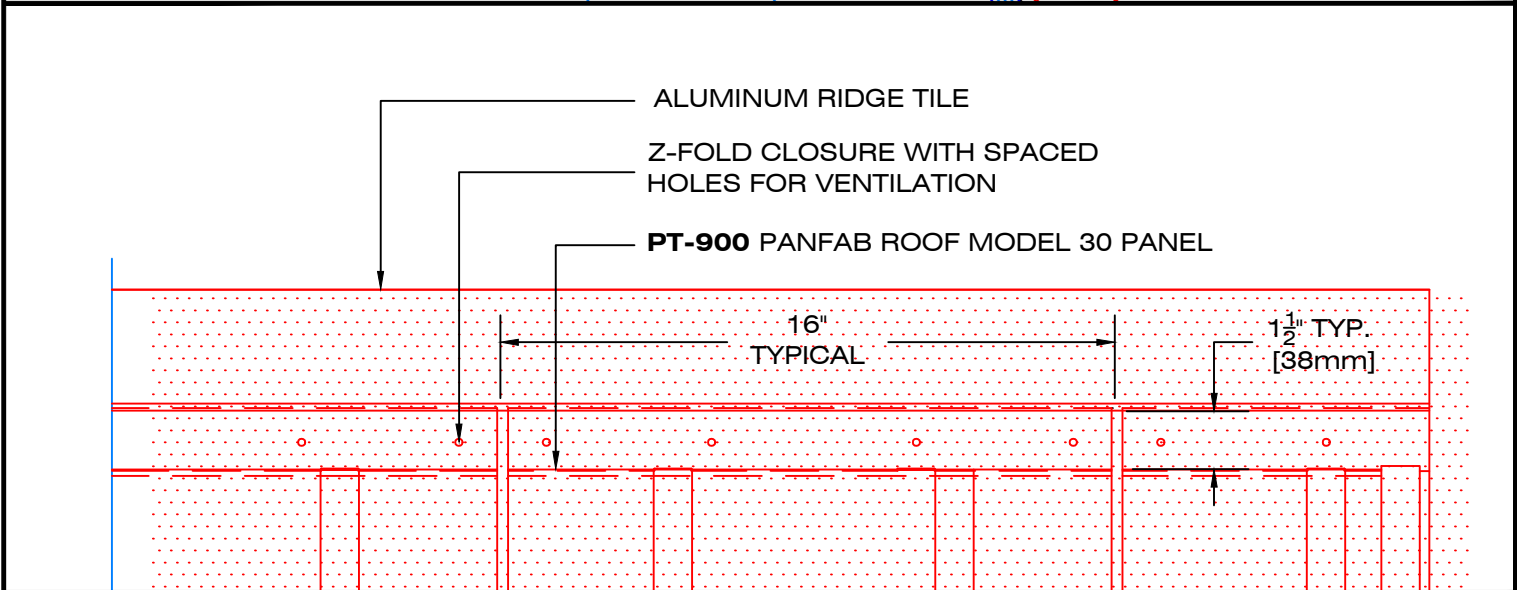
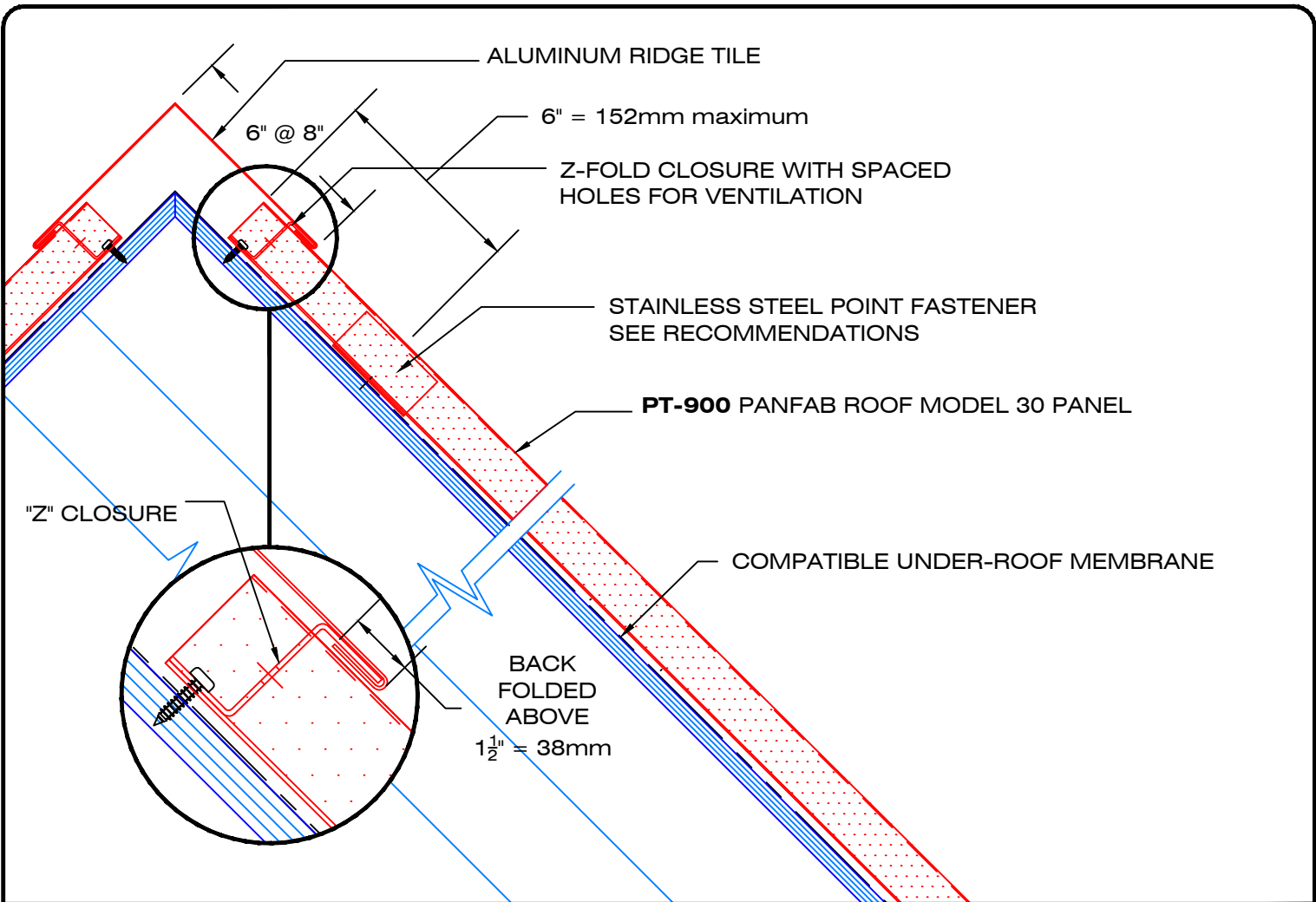
AS SHOWN

Page:

900100

Date:

DECEMBER 2025



LES INDUSTRIES



49, boul. de la Seigneurie Est  
Blainville (Québec) J7C 4G6

Phone : (450) 430-3029

[www.panfab.com](http://www.panfab.com)

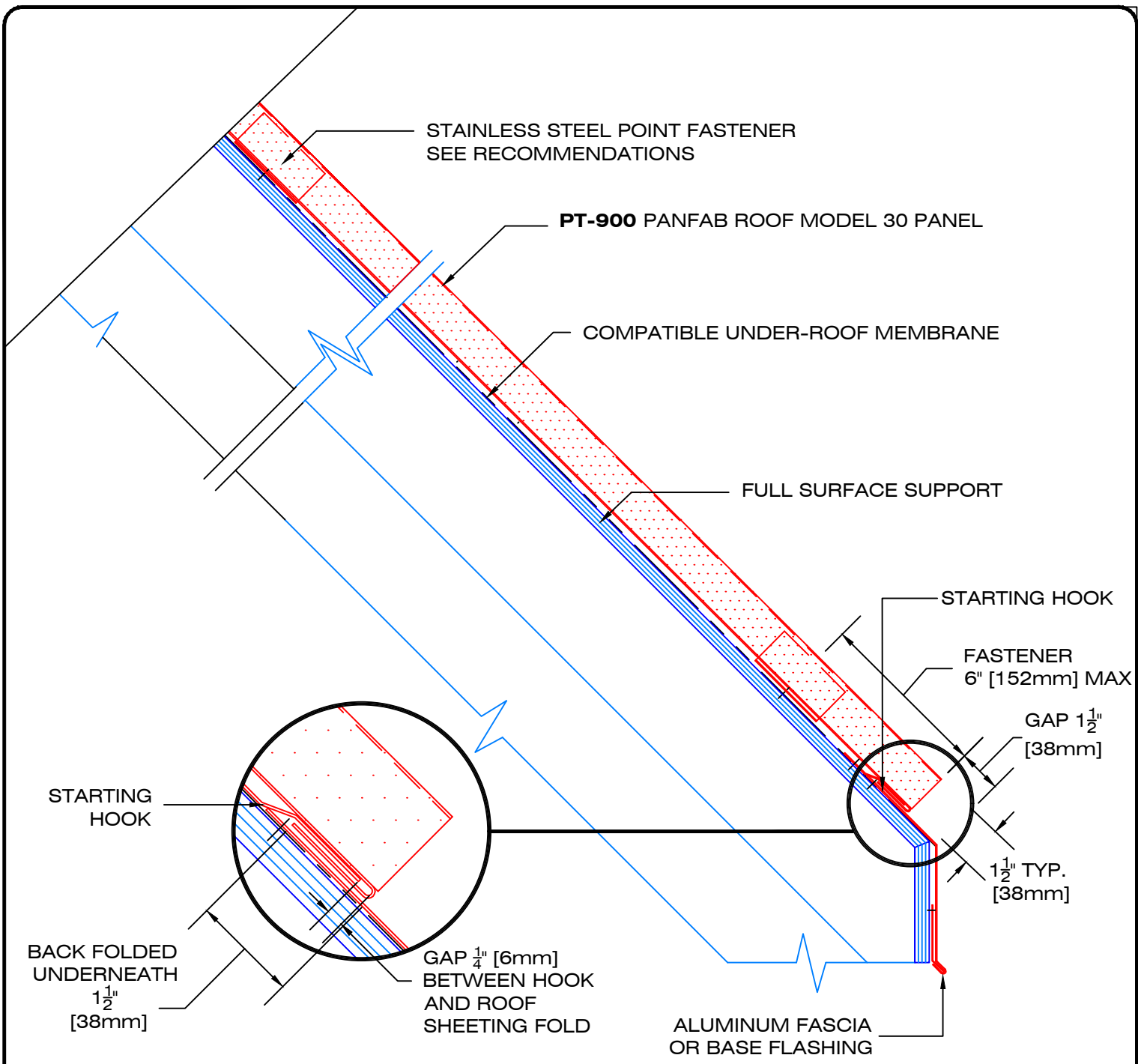
Project:  
PT-900 PANFAB ROOF MODEL 30

Title:  
ROOF LINE

Scale:  
1 : 5

Date:  
DECEMBER 2025

Page:  
900111



LES INDUSTRIES



49, boul. de la Seigneurie Est  
Blainville (Québec) J7C 4G6

Phone : (450) 430-3029

[www.panfab.com](http://www.panfab.com)

Project:

PT-900 PANFAB ROOF MODEL 30

Title:

FASCIA CUT

Scale:

1 : 5

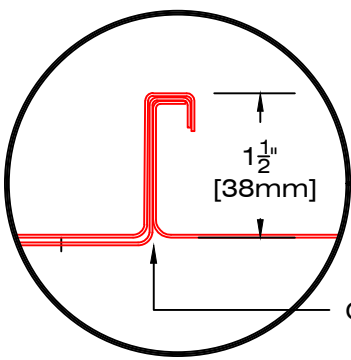
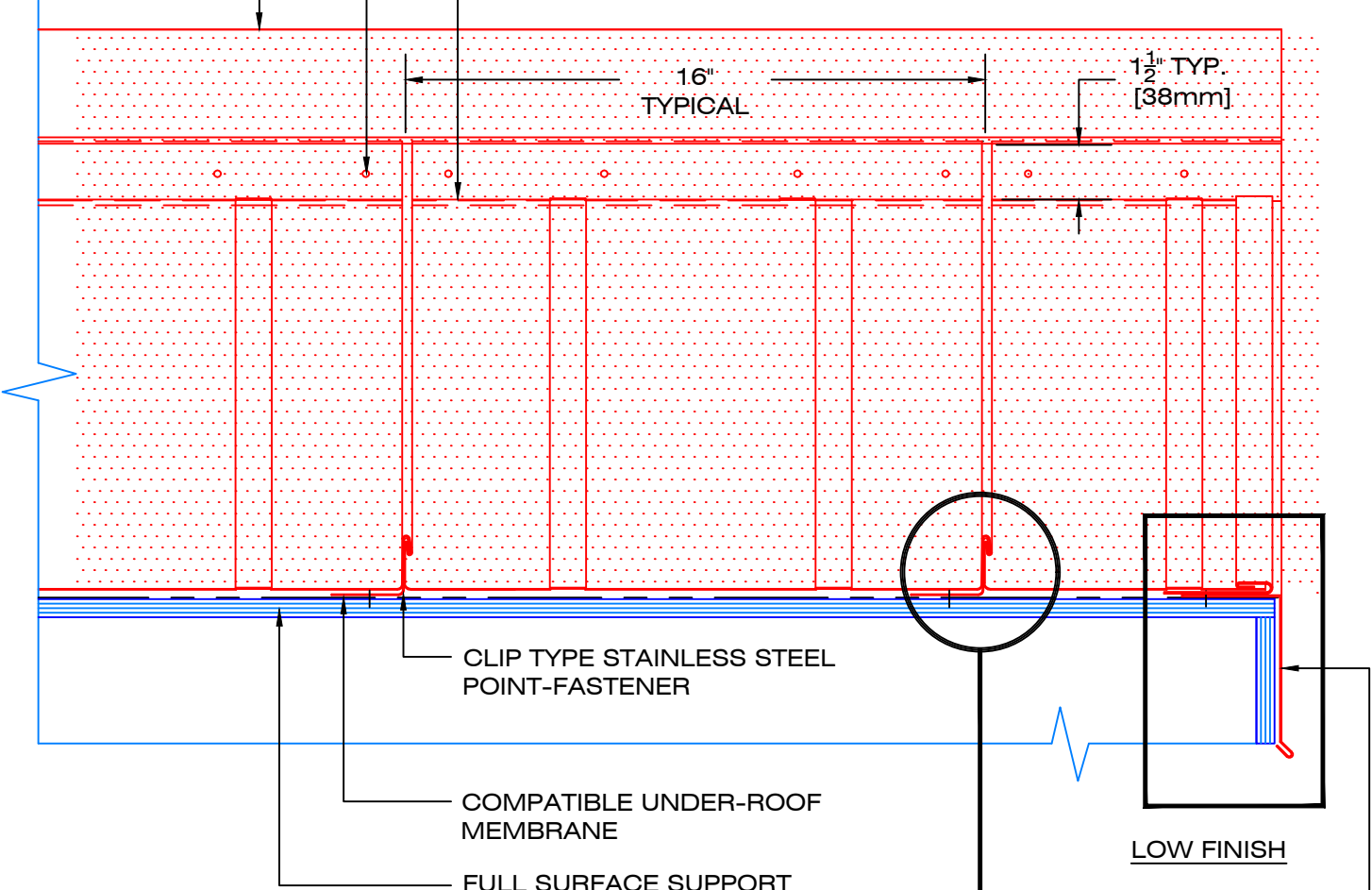
Page:

900112

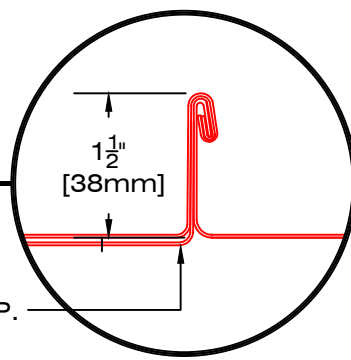
Date:

DECEMBER 2025

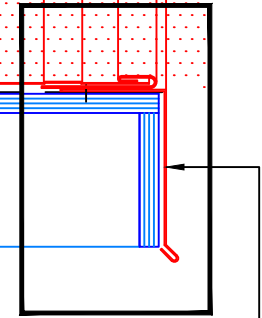
ALUMINUM RIDGE TILE  
 Z-FOLD CLOSURE WITH SPACED HOLES FOR VENTILATION  
 PT-900 PANFAB ROOF MODEL 30 PANEL



BEFORE CRIMPING

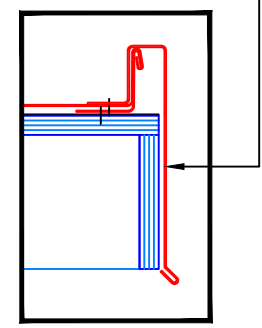


AFTER DOUBLE CRIMPING BY PICCOLO



LOW FINISH

ALUMINUM FLASHING



HIGH FINISH

LES INDUSTRIES



49, boul. de la Seigneurie Est  
 Blainville (Québec) J7C 4G6

Phone : (450) 430-3029

[www.panfab.com](http://www.panfab.com)

Project:

PT-900 PANFAB ROOF MODEL 30

Title:

LATERAL FASCIA CUT

Scale:

1 : 5

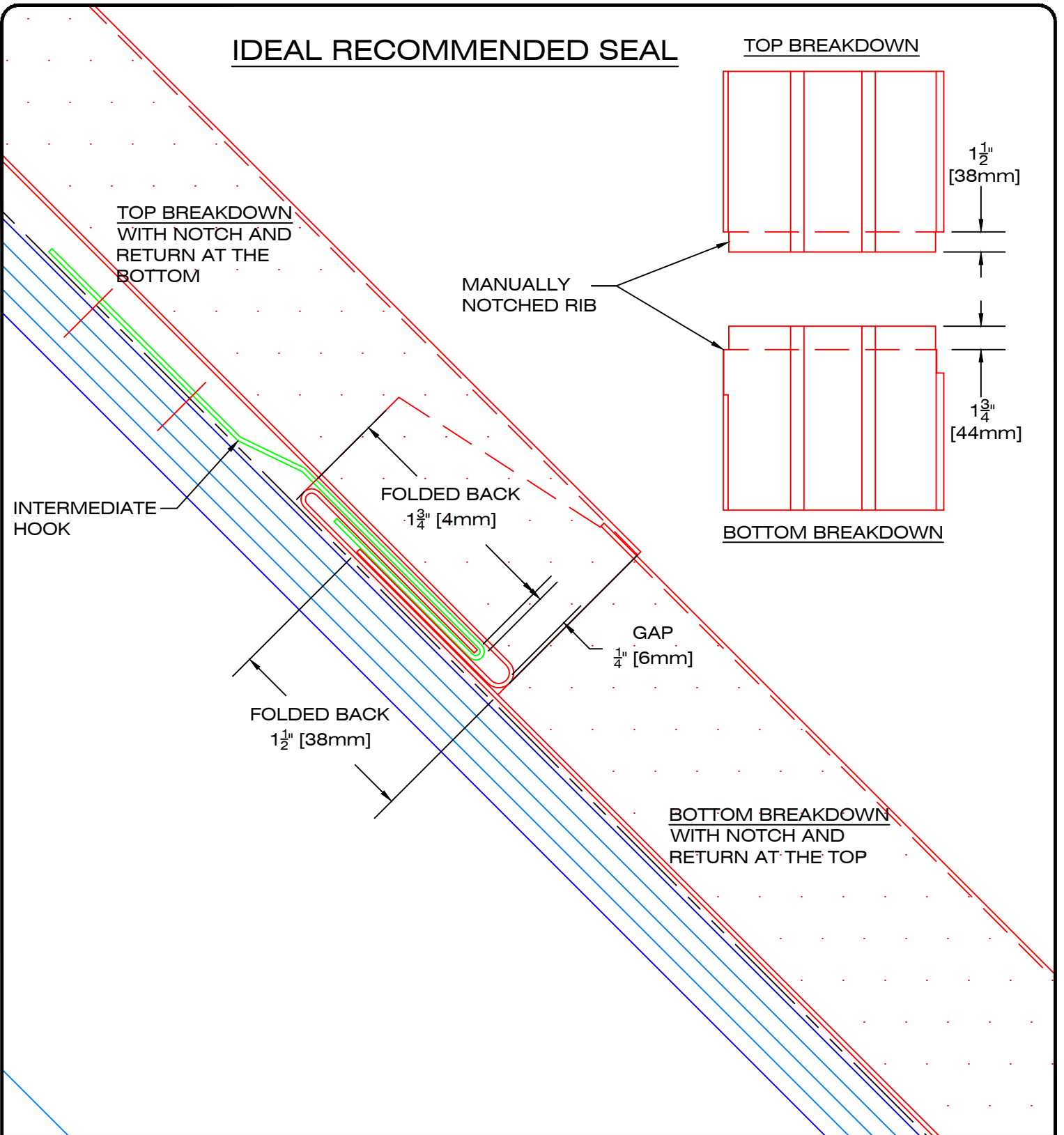
Date:

DECEMBER 2025

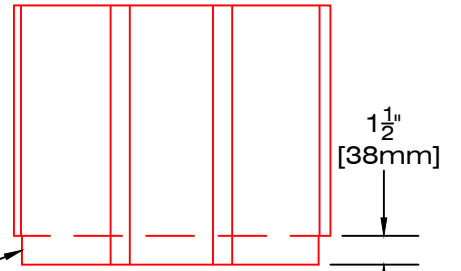
Page:

900113

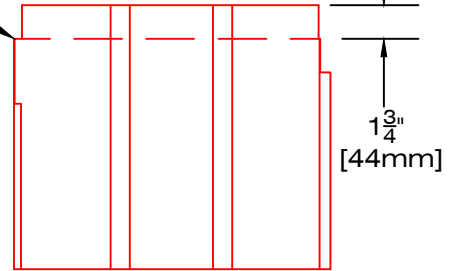
# IDEAL RECOMMENDED SEAL



## TOP BREAKDOWN



MANUALLY NOTCHED RIB



## BOTTOM BREAKDOWN

INTERMEDIATE HOOK

FOLDED BACK  
1 3/4" [4mm]

GAP  
1/4" [6mm]

FOLDED BACK  
1 1/2" [38mm]

BOTTOM BREAKDOWN  
WITH NOTCH AND  
RETURN AT THE TOP

LES INDUSTRIES



49, boul. de la Seigneurie Est  
Blainville (Québec) J7C 4G6

Phone : (450) 430-3029

[www.panfab.com](http://www.panfab.com)

Project:

PT-900 PANFAB ROOF MODEL 30

Title:

HORIZONTAL JOINT CUT

Scale:

1 : 1

Page:

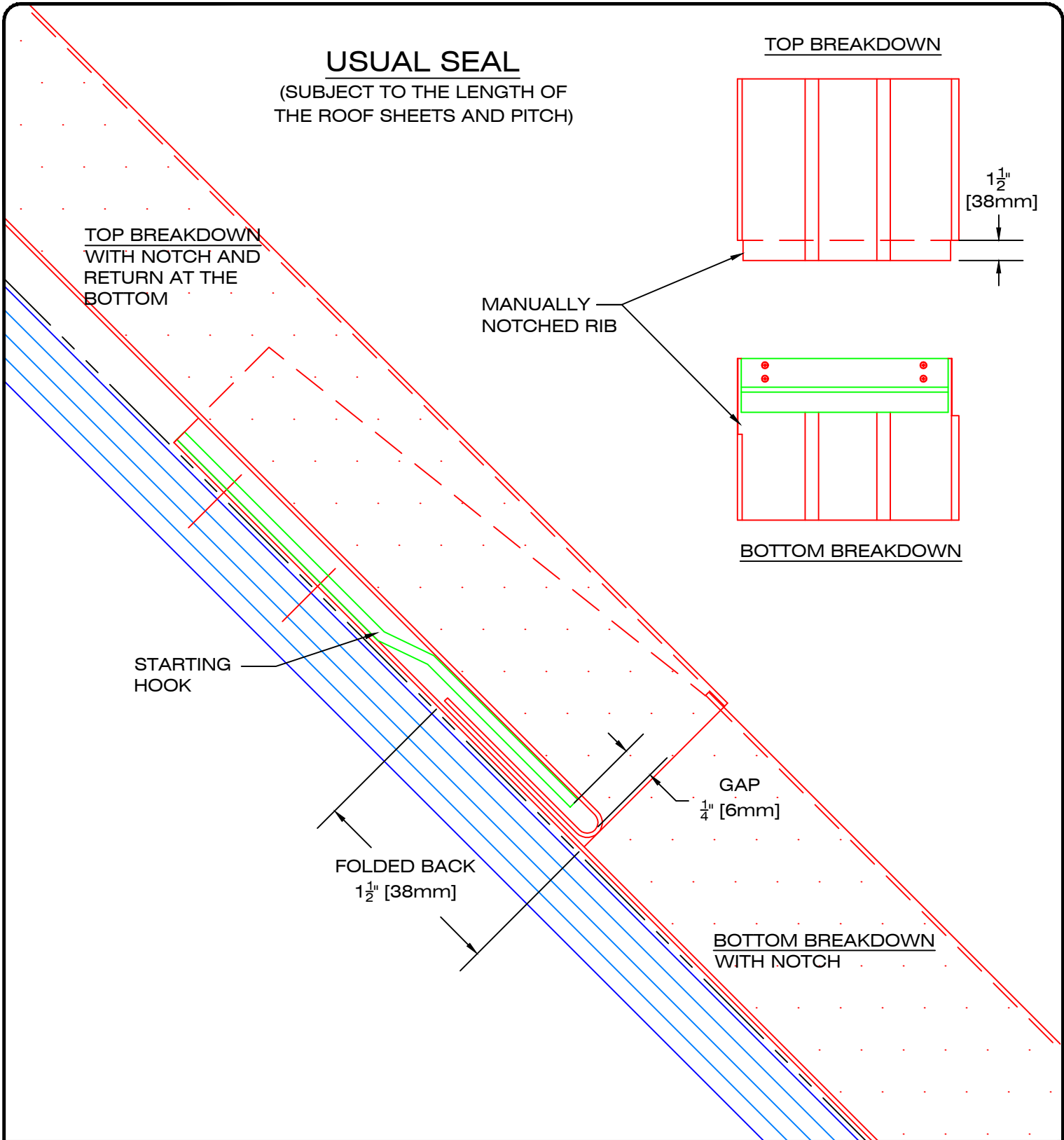
900114A

Date:

DECEMBER 2025

# USUAL SEAL

(SUBJECT TO THE LENGTH OF THE ROOF SHEETS AND PITCH)



LES INDUSTRIES

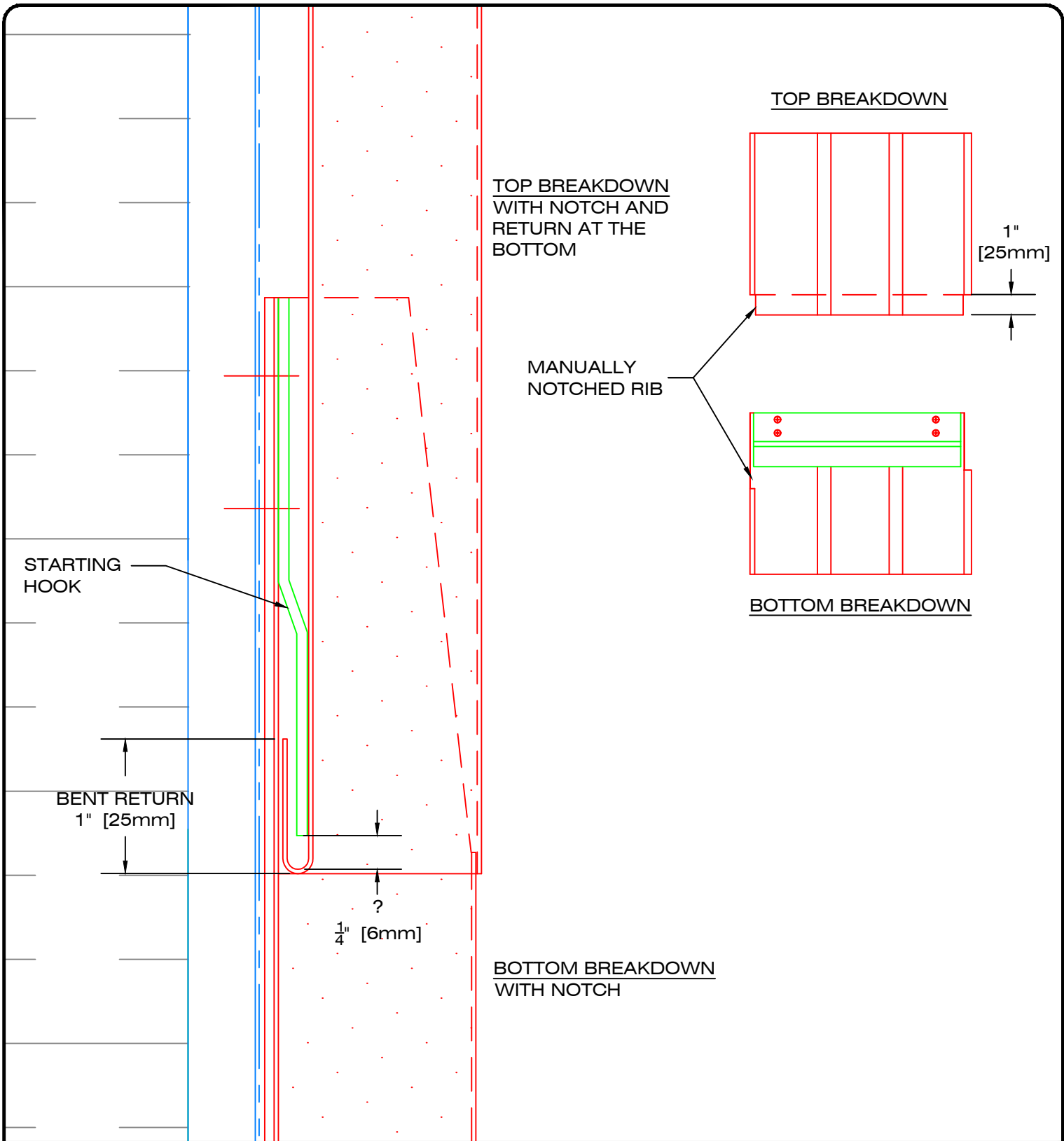


49, boul. de la Seigneurie Est  
Blainville (Québec) J7C 4G6

Phone : (450) 430-3029

[www.panfab.com](http://www.panfab.com)

Project:		PT-900 PANFAB ROOF MODEL 30	
Title:		HORIZONTAL JOINT CUT	
Scale:	1 : 1	Page:	900114B
Date:	DECEMBER 2025		



LES INDUSTRIES



49, boul. de la Seigneurie Est  
Blainville (Québec) J7C 4G6

Phone : (450) 430-3029

[www.panfab.com](http://www.panfab.com)

Project:

PT-900 PANFAB ROOF MODEL 30

Title:

HORIZONTAL JOINT CUT

Scale:

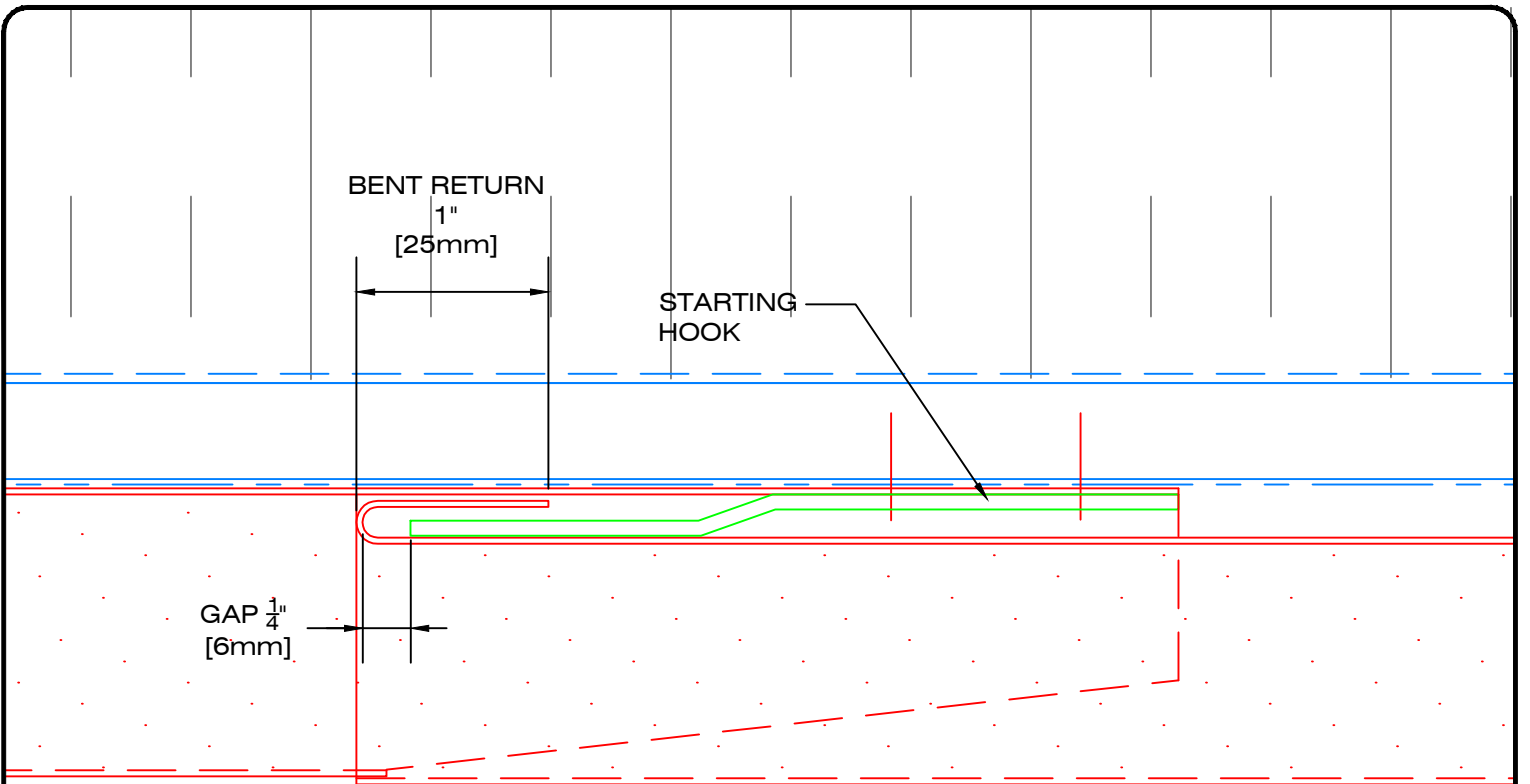
1 : 1

Date:

DECEMBER 2025

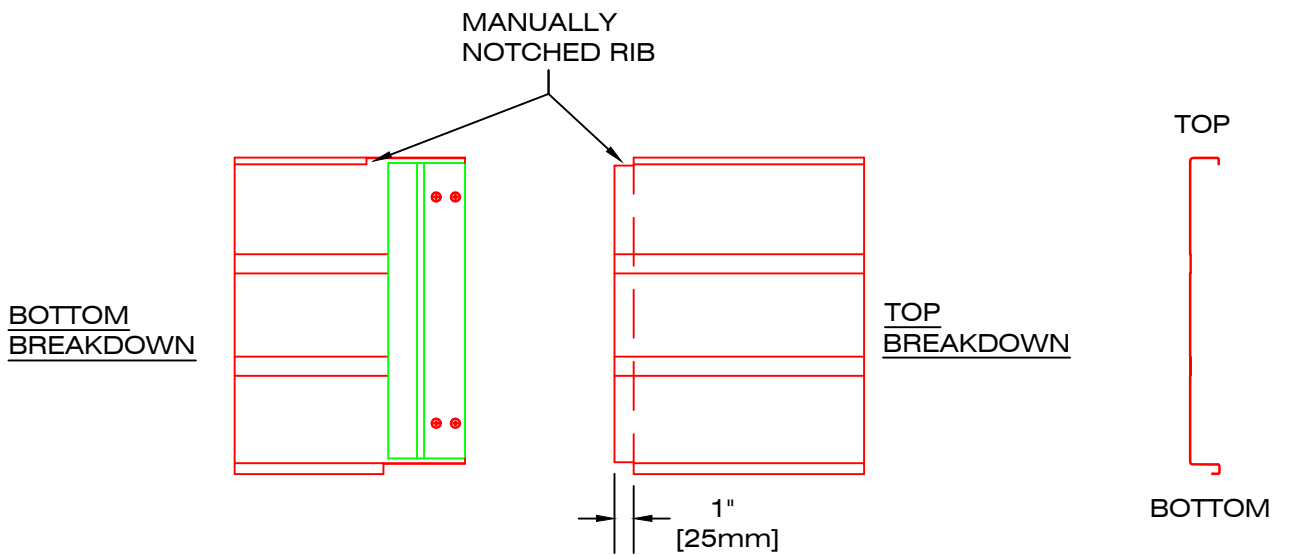
Page:

900115



BOTTOM BREAKDOWN WITH NOTCH

TOP BREAKDOWN WITH NOTCH AND RETURN AT THE BOTTOM



LES INDUSTRIES



49, boul. de la Seigneurie Est  
Blainville (Québec) J7C 4G6

Phone : (450) 430-3029

[www.panfab.com](http://www.panfab.com)

Project:

PT-900 PANFAB ROOF MODEL 30

Title:

VERTICAL JOINT CUT

Scale:

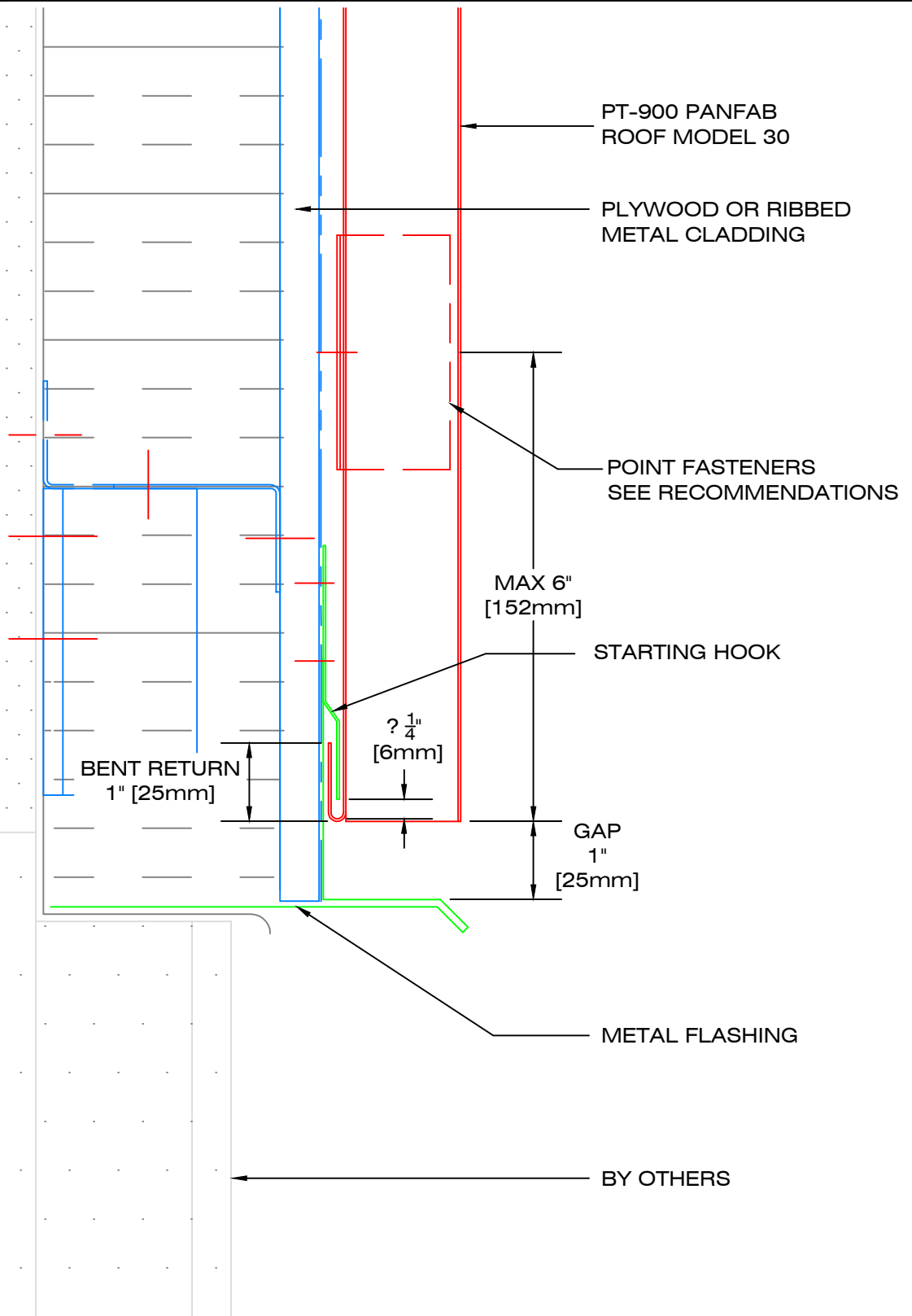
1 : 1

Page:

900116

Date:

DECEMBER 2025



LES INDUSTRIES



49, boul. de la Seigneurie Est  
Blainville (Québec) J7C 4G6

Phone : (450) 430-3029

[www.panfab.com](http://www.panfab.com)

Project:

PT-900 PANFAB ROOF MODEL 30

Title:

SECTIONAL DETAIL - FOUNDATION

Scale:

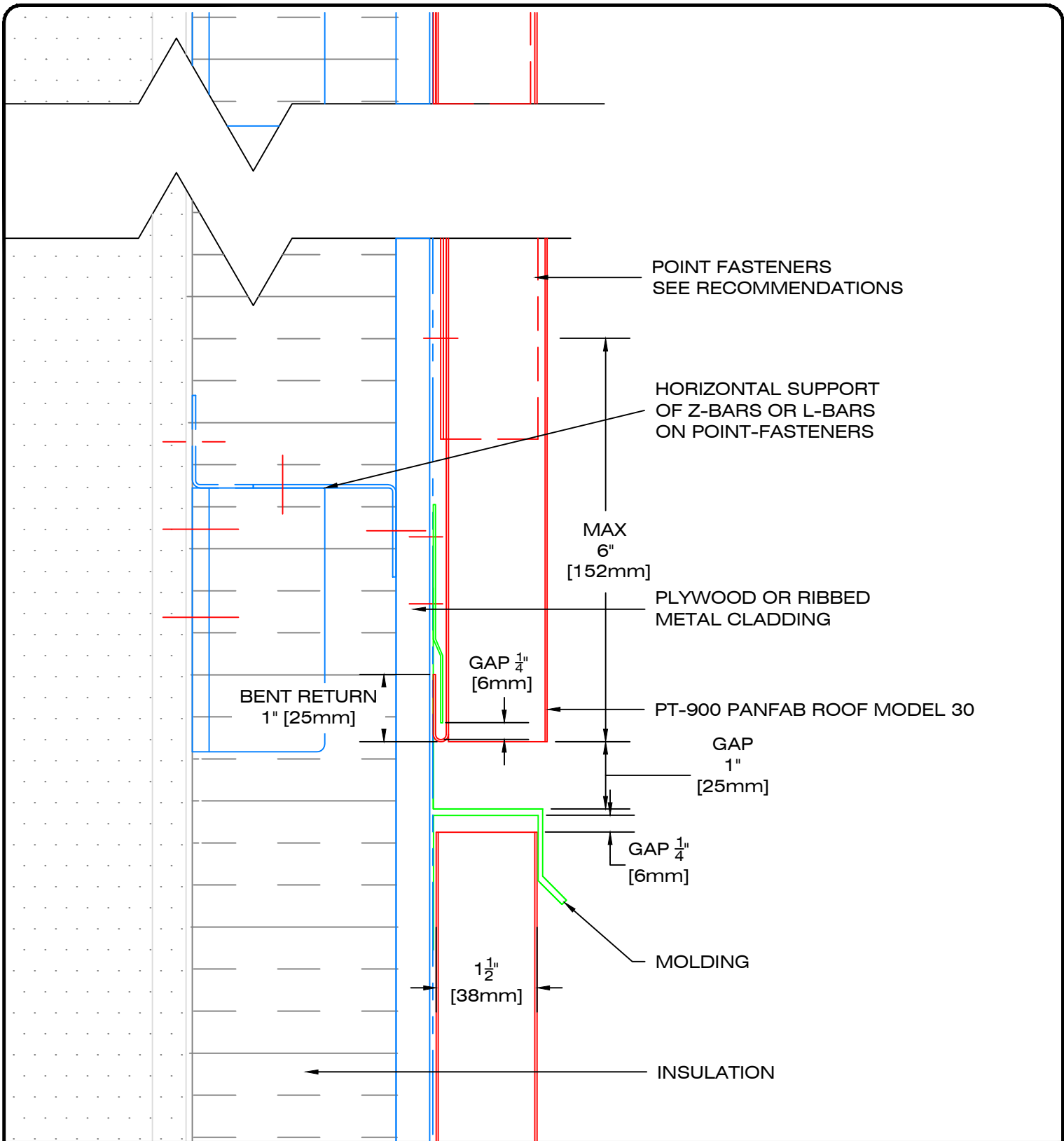
1 : 2

Page:

900211

Date:

DECEMBER 2025



LES INDUSTRIES



49, boul. de la Seigneurie Est  
Blainville (Québec) J7C 4G6

Phone : (450) 430-3029

[www.panfab.com](http://www.panfab.com)

Project:

PT-900 PANFAB ROOF MODEL 30

Title:

SECTIONAL DETAIL - HORIZONTAL JOINT

Scale:

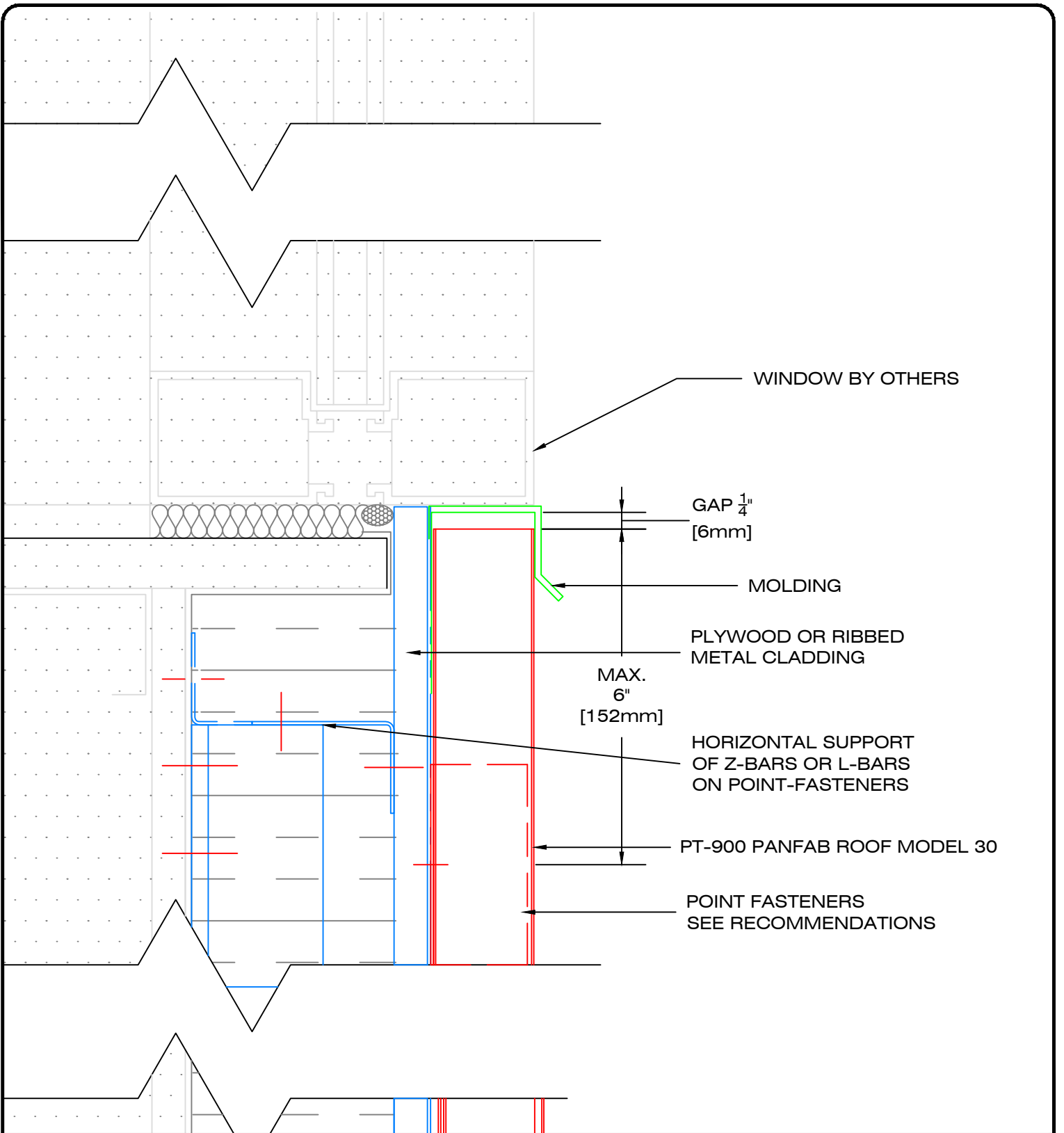
1 : 2

Page:

900220

Date:

DECEMBER 2025



LES INDUSTRIES



49, boul. de la Seigneurie Est  
Blainville (Québec) J7C 4G6

Phone : (450) 430-3029

[www.panfab.com](http://www.panfab.com)

Project:

PT-900 PANFAB ROOF MODEL 30

Title:

SECTIONAL DETAIL - WINDOW RELIEF

Scale:

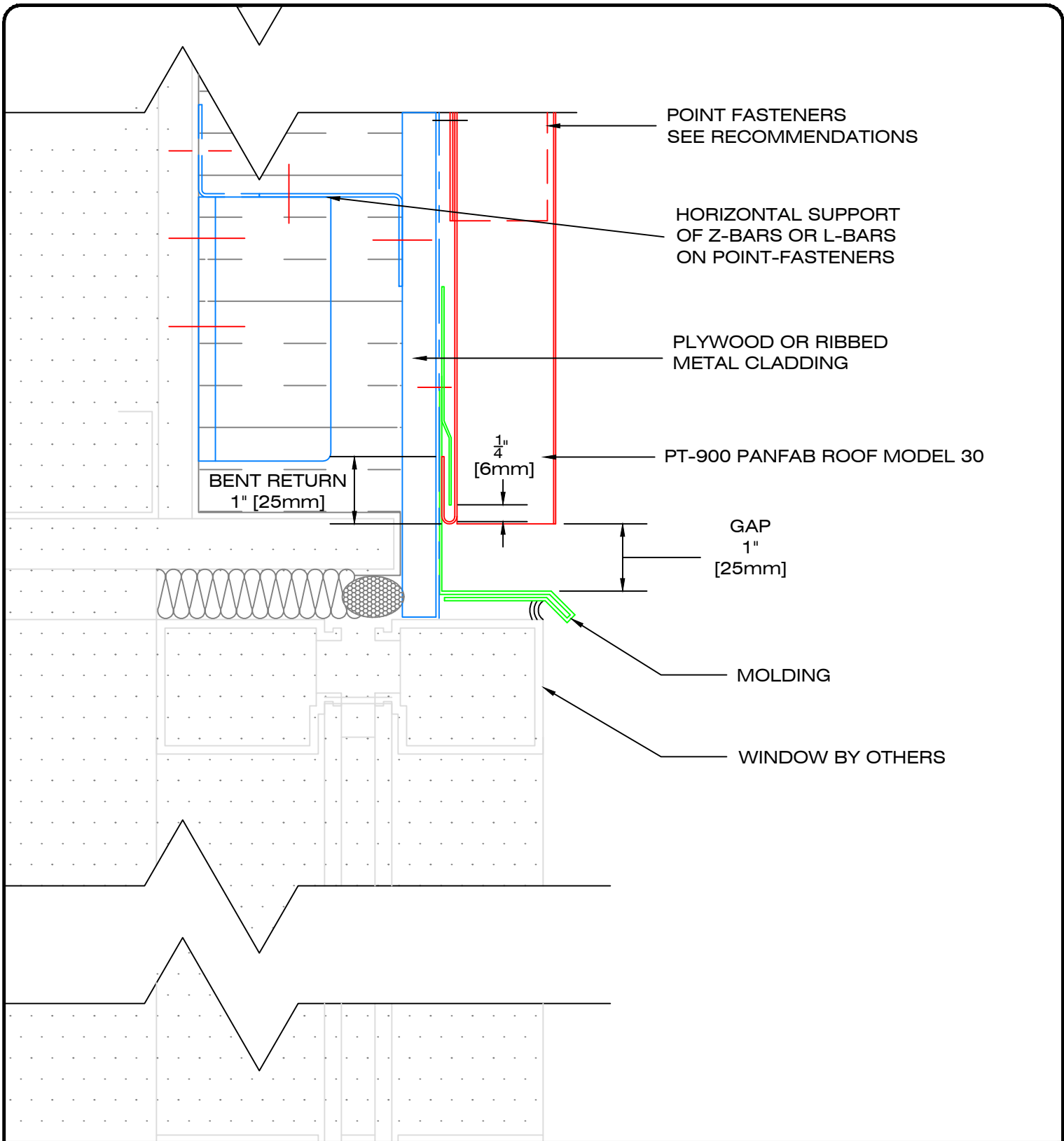
1 : 2

Page:

900230

Date:

DECEMBER 2025



LES INDUSTRIES



49, boul. de la Seigneurie Est  
Blainville (Québec) J7C 4G6

Phone : (450) 430-3029

[www.panfab.com](http://www.panfab.com)

Project:

PT-900 PANFAB ROOF MODEL 30

Title:

SECTIONAL DETAIL - WINDOW LINTEL

Scale:

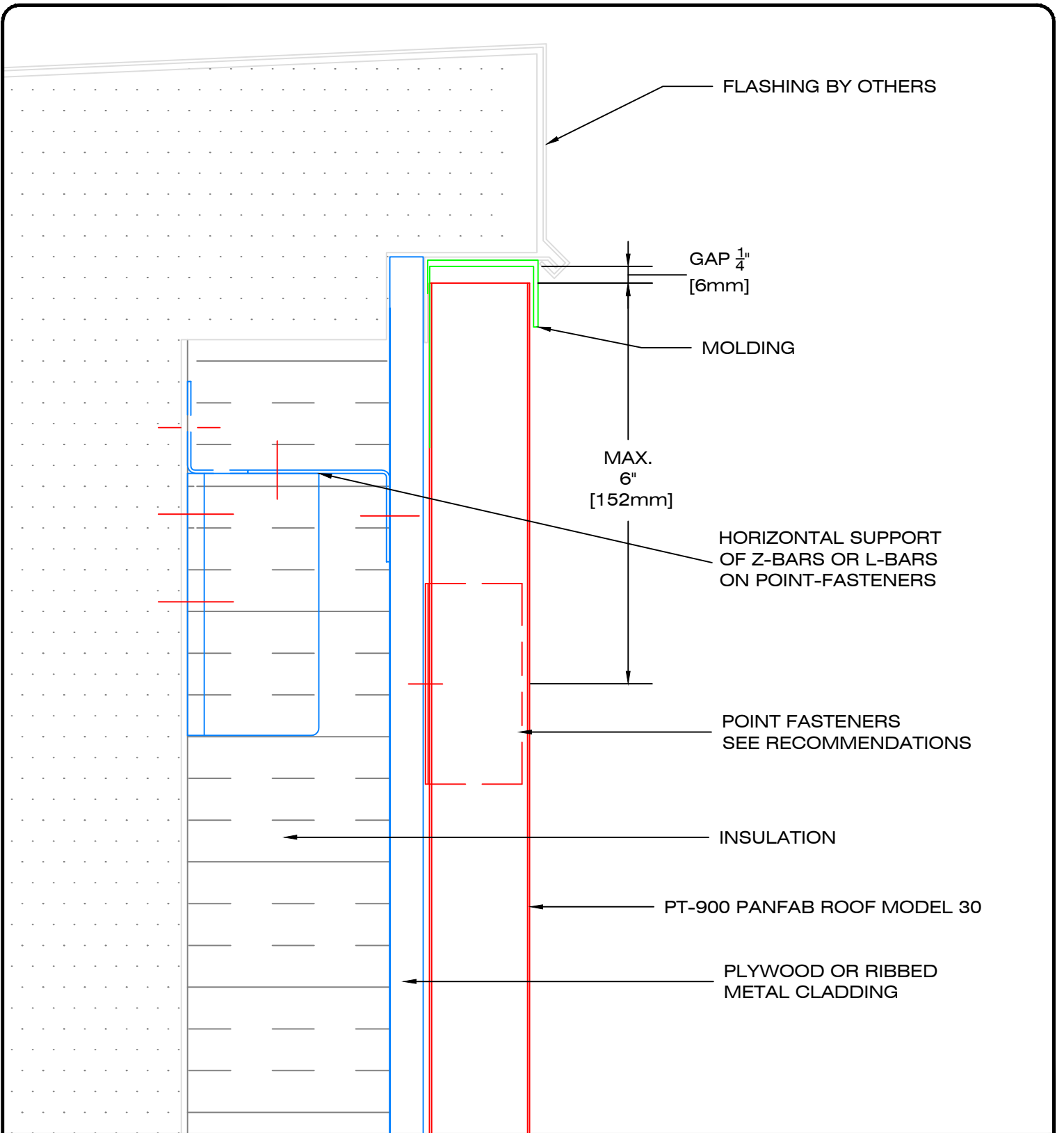
1 : 2

Page:

900240

Date:

DECEMBER 2025



LES INDUSTRIES



49, boul. de la Seigneurie Est  
Blainville (Québec) J7C 4G6

Phone : (450) 430-3029

[www.panfab.com](http://www.panfab.com)

Project:

PT-900 PANFAB ROOF MODEL 30

Title:

SECTIONAL DETAIL - PARAPET

Scale:

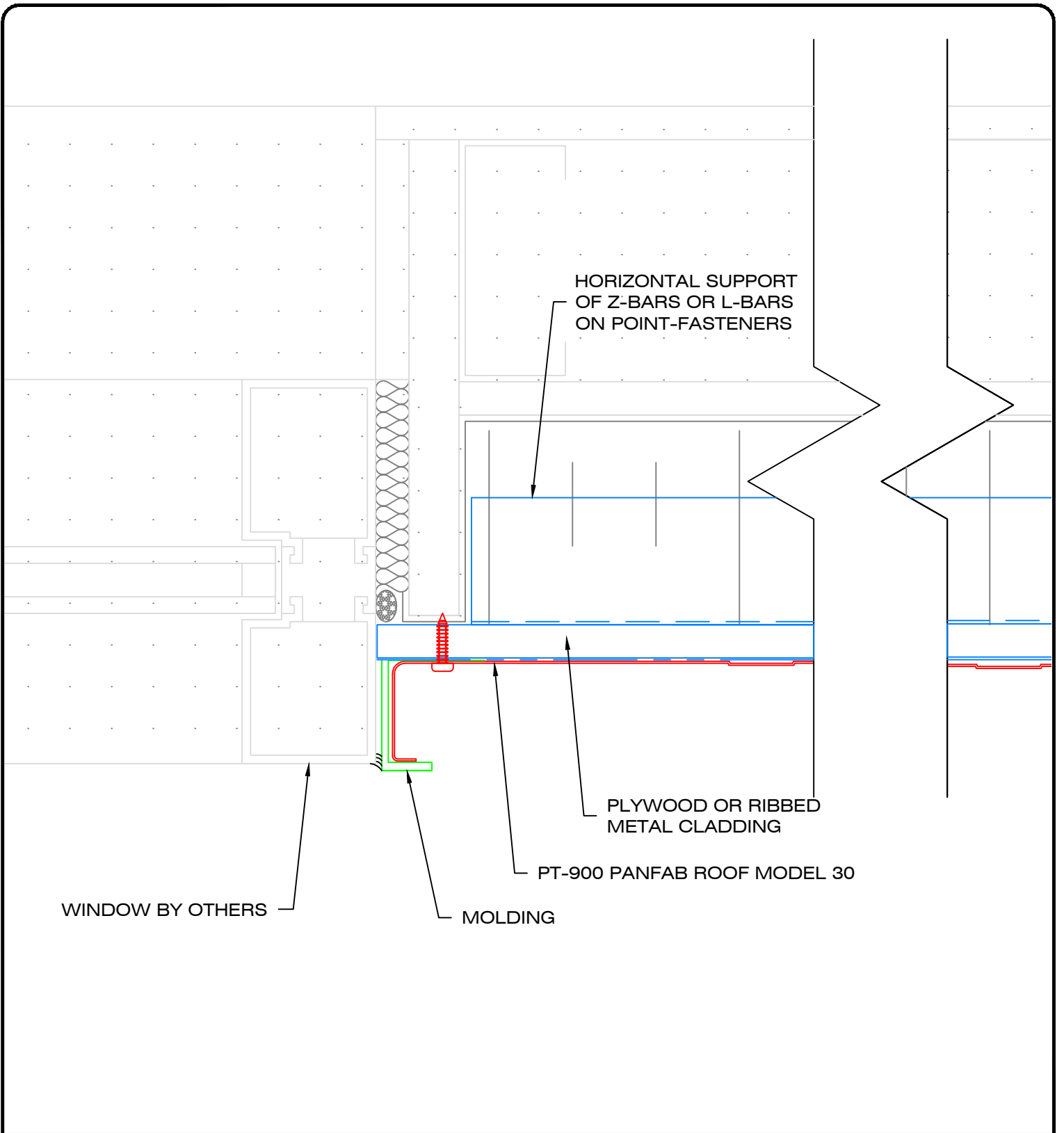
1 : 2

Page:

900250

Date:

DECEMBER 2025



WINDOW BY OTHERS

HORIZONTAL SUPPORT OF Z-BARS OR L-BARS ON POINT-FASTENERS

PLYWOOD OR RIBBED METAL CLADDING

PT-900 PANFAB ROOF MODEL 30

MOLDING

LES INDUSTRIES



49, boul. de la Seigneurie Est  
Blainville (Québec) J7C 4G6

Phone : (450) 430-3029

[www.panfab.com](http://www.panfab.com)

Project:

PT-900 PANFAB ROOF MODEL 30

Title:

PLAN DETAIL - WINDOW JAMB

Scale:

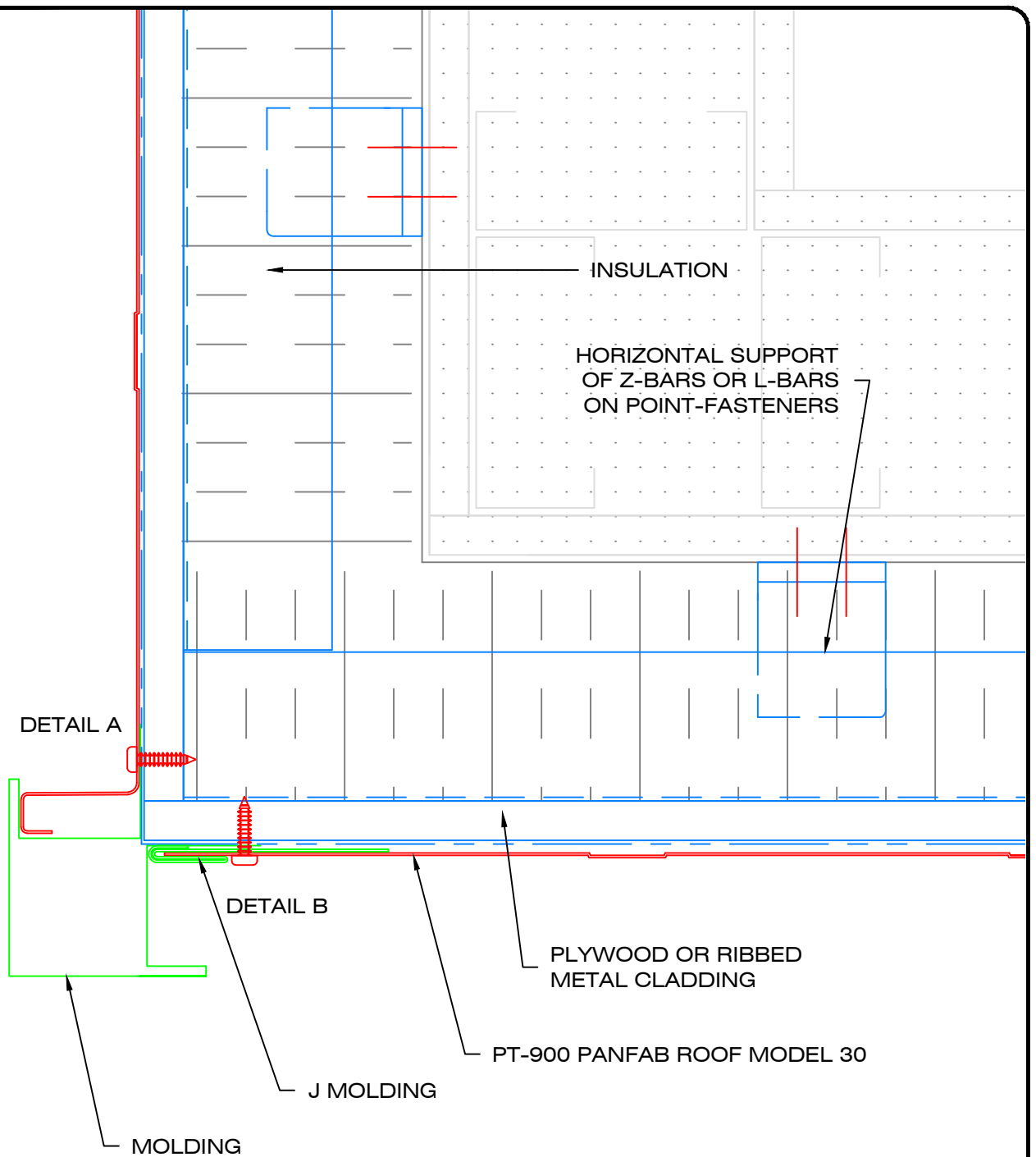
1 : 2

Page:

900310

Date:

DECEMBER 2025



LES INDUSTRIES



49, boul. de la Seigneurie Est  
Blainville (Québec) J7C 4G6

Phone : (450) 430-3029

[www.panfab.com](http://www.panfab.com)

Project:

PT-900 PANFAB ROOF MODEL 30

Title:

PLAN DETAIL - OUTSIDE CORNER

Scale:

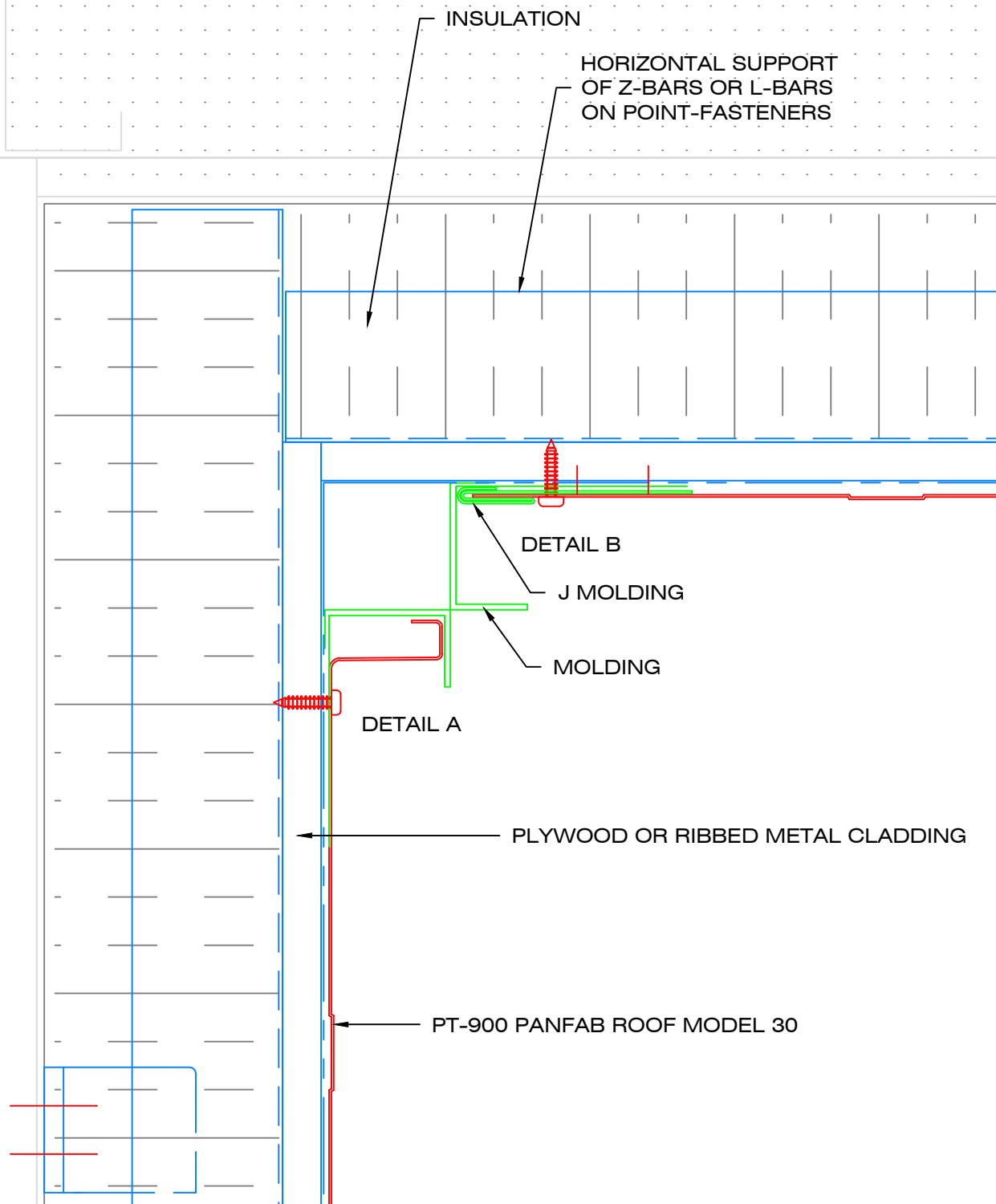
1 : 2

Date:

DECEMBER 2025

Page:

900320



LES INDUSTRIES



49, boul. de la Seigneurie Est  
Blainville (Québec) J7C 4G6

Phone : (450) 430-3029

[www.panfab.com](http://www.panfab.com)

Project:

PT-900 PANFAB ROOF MODEL 30

Title:

PLAN DETAIL - INTERIOR CORNER

Scale:

1 : 2

Page:



900330

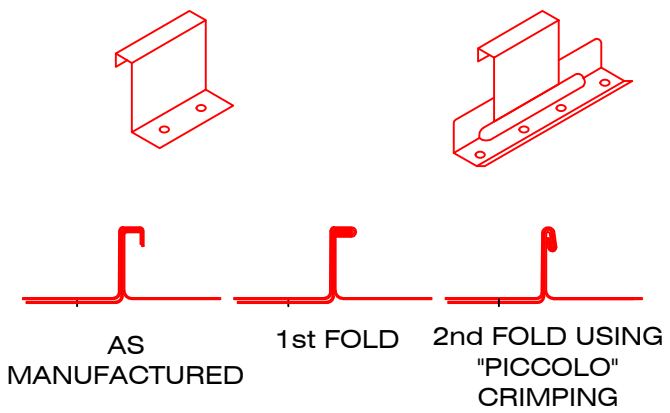
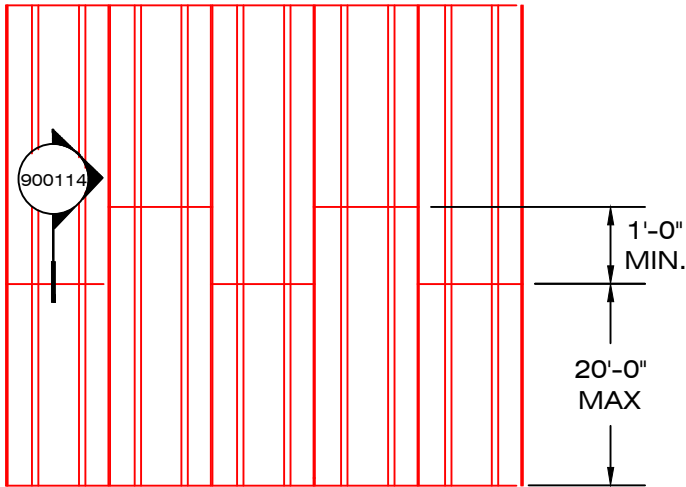
Date:

DECEMBER 2025

# ALUMINUM : ROOF USAGE

STAGGERED IF GREATER THAN 20'-0"

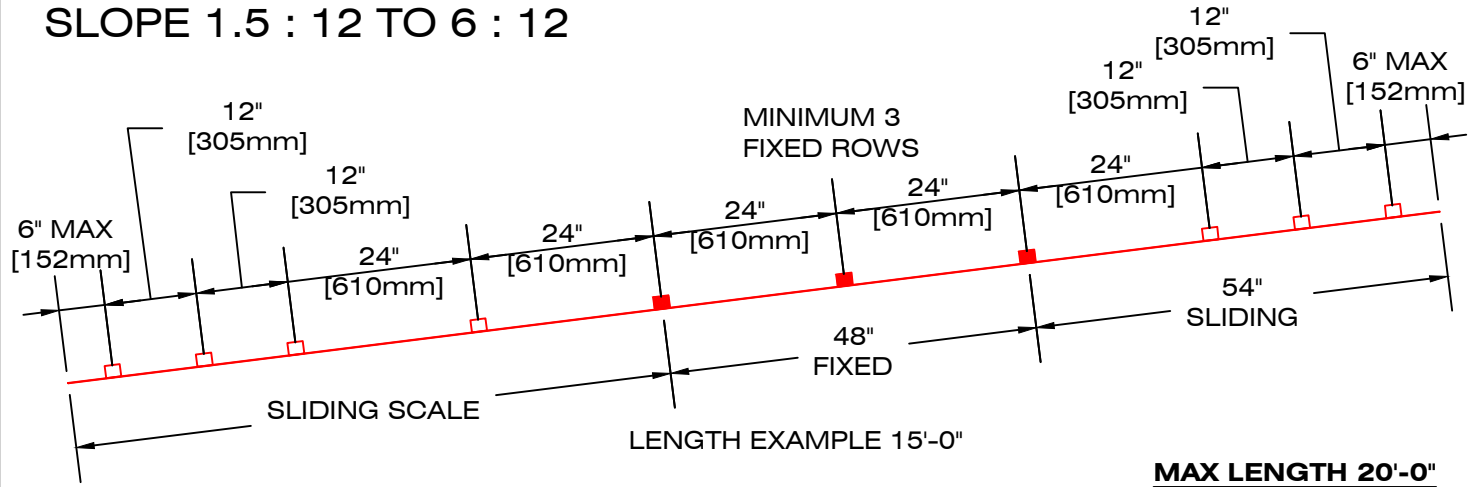
 = CLIP FASTENER FIXED MODEL     = CLIP FASTENER SLIDING MODEL



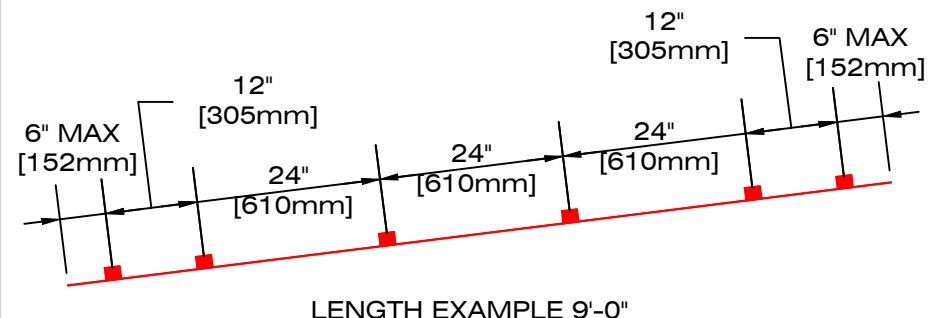
SCALE: 1 : 30



SCALE: 1 : 4

## SLOPE 1.5 : 12 TO 6 : 12



**MAX LENGTH 20'-0"**



 = CLIP - FIXED MODEL  
 = CLIP - SLIDING MODEL

SCALE: 1 : 25



49, boul. de la Seigneurie Est  
Blainville (Québec) J7C 4G6

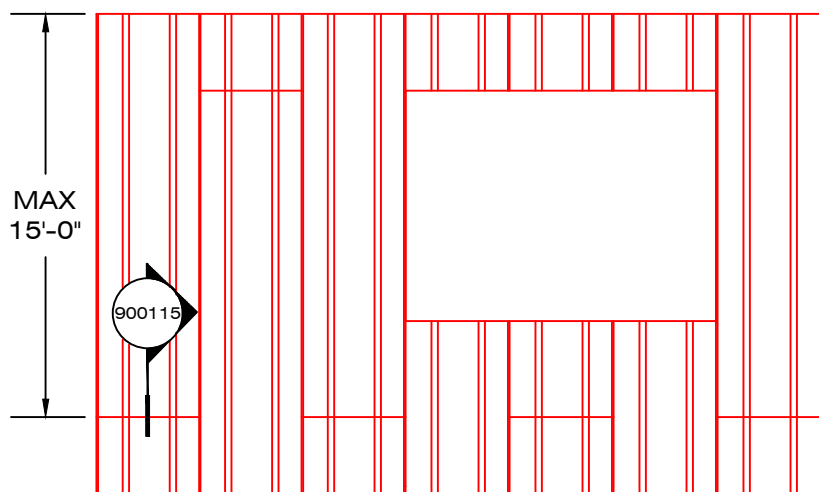
Phone : (450) 430-3029

[www.panfab.com](http://www.panfab.com)

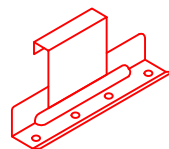
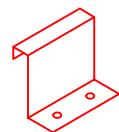
Project: PT-900 PANFAB ROOF MODEL 30	
Title: ALUMINUM ON ROOF = CLIP FASTENER	
Scale: AS SHOWN	Page: 900500
Date: DECEMBER 2025	



# ALUMINUM : VERTICAL WALL USAGE



■ = CLIP FASTENER FIXED MODEL     □ = CLIP FASTENER SLIDING MODEL

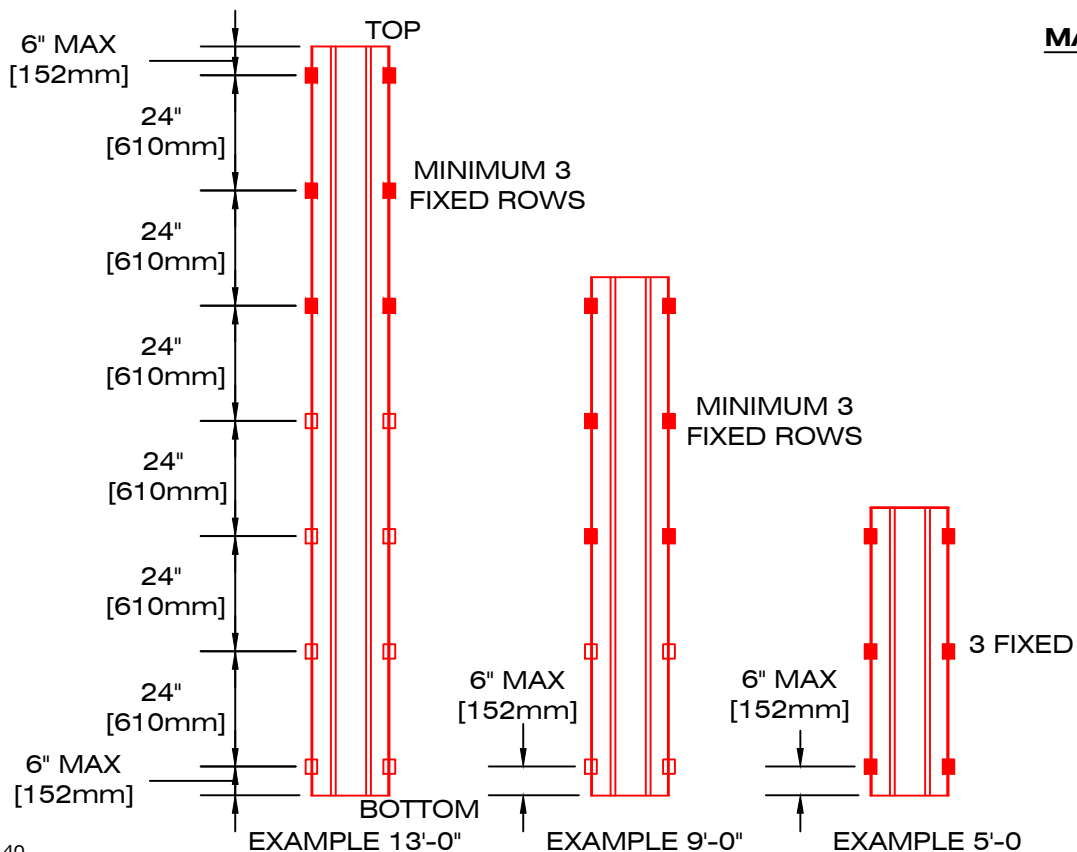


AS MANUFACTURED

1st FOLD BY MANUAL CRIMPING

SCALE: 1 : 30

SCALE: 1 : 4



SCALE: 1 : 40

LES INDUSTRIES



49, boul. de la Seigneurie Est  
Blainville (Québec) J7C 4G6

Phone : (450) 430-3029

[www.panfab.com](http://www.panfab.com)

Project:

PT-900 PANFAB ROOF MODEL 30

Title:

VERTICAL WALL ALUMINUM = CLIP FASTENER

Scale:

AS SHOWN

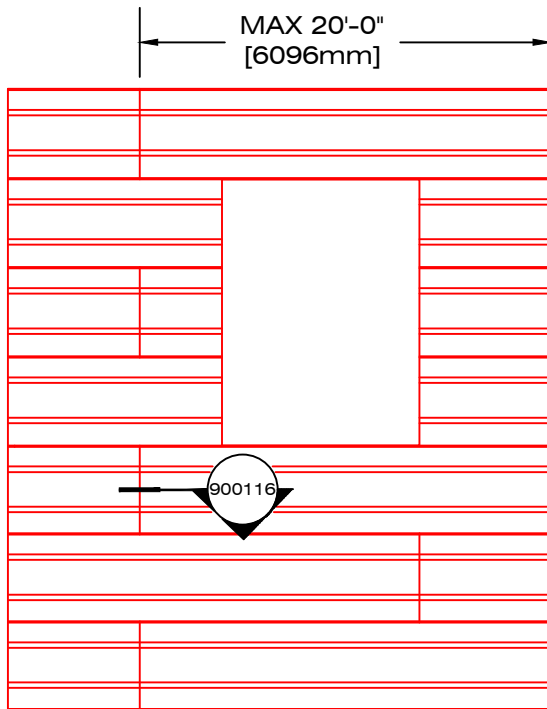
Page:

900502

Date:

DECEMBER 2025

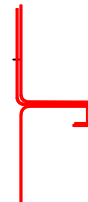
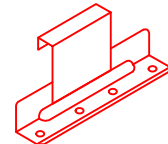
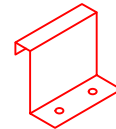
# ALUMINUM : HORIZONTAL WALL USAGE



SCALE: 1 : 35

 = CLIP FASTENER  
FIXED MODEL

 = CLIP FASTENER  
SLIDING MODEL

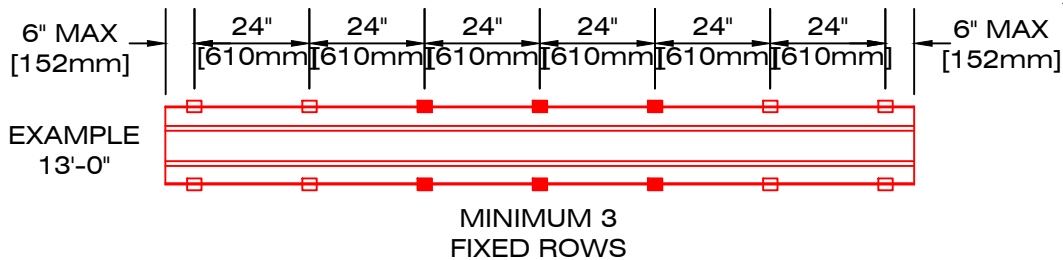


AS  
MANUFACTURED

1st FOLD  
BY MANUAL  
CRIMPING

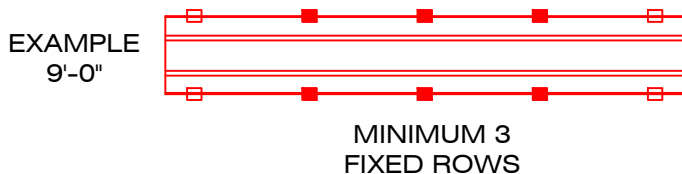
SCALE: 1 : 4

**MAX LENGTH 20'-0"**



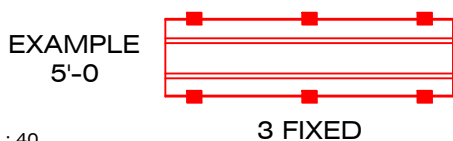
EXAMPLE  
13'-0"

MINIMUM 3  
FIXED ROWS



EXAMPLE  
9'-0"

MINIMUM 3  
FIXED ROWS



EXAMPLE  
5'-0"

3 FIXED

SCALE: 1 : 40

LES INDUSTRIES



49, boul. de la Seigneurie Est  
Blainville (Québec) J7C 4G6

Phone : (450) 430-3029

[www.panfab.com](http://www.panfab.com)

Project:

PT-900 PANFAB ROOF MODEL 30

Title:

HORIZONTAL WALL ALUM. = CLIP FASTENER

Scale:

AS SHOWN

Page:

900504

Date:

DECEMBER 2025