

Usage: Modular surface grid.

Description: Custom-made panel, folded edge fin style, alum 2.0mm. Depth $1 \frac{1}{4}'' = 32\text{mm}$ / Joint $1'' = 25\text{mm}$. Visible screws at the bottom of the joint. Usual maximum dimensions in alum = $25'' \times 116''$ c/c attached. Special maximum dimensions with D-MAX finish = $25'' \times 120''$ c/c attached. (Optimal dimensions $20''$ to $25'' \times \leq 58''$, $100''$ to $120''$; non-optimal $<20'' \times 58''$ to $100''$)

Finish options: -D-MAX pre-painted finish : Alum 2.0mm, alloy 5754H42, pre-painted finish type PVDF Kynar 500 70% such as Duranar XL, 7 colours in inventory : White RAL9016, Jupiter RAL9006, Neptune, Alpha Centauri, Charcoal, Rigel-2 and Black RAL9005.
-Acrylic urethane painted finish : Alum 2.0mm, alloy 3003H14, unlimited choice of colours as per Sico, BM, RAL, QC charts.



49, boul. de la Seigneurie Est
Blainville (Québec) J7C 4G6

Phone : (450) 430-3029

www.panfab.com

Project:

PS-200 PANFAB STANDARD

Title:

ISOMETRIC VIEW

Scale:

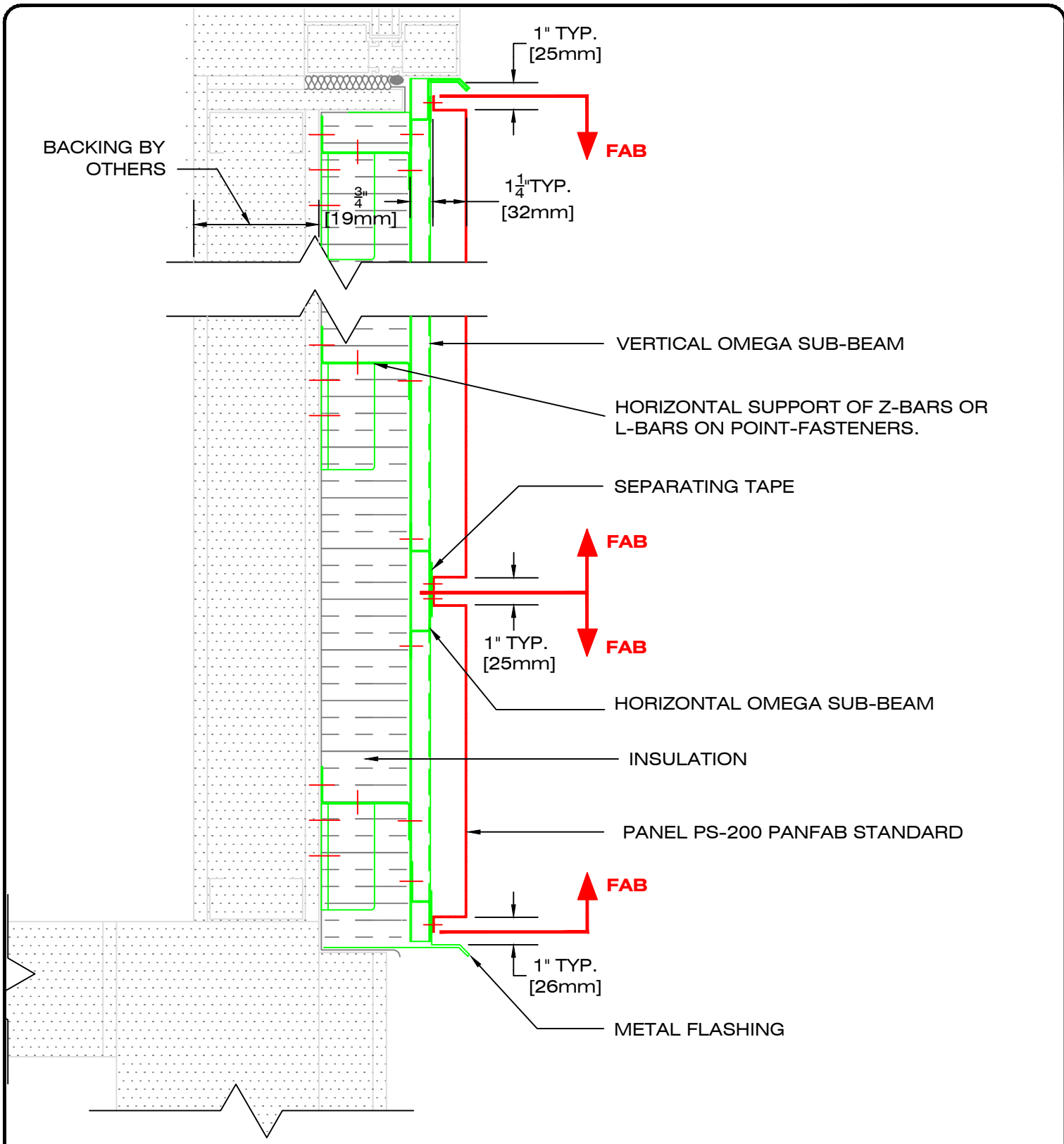
1 : 60

Page:

200200

Date:

AUGUST 2025

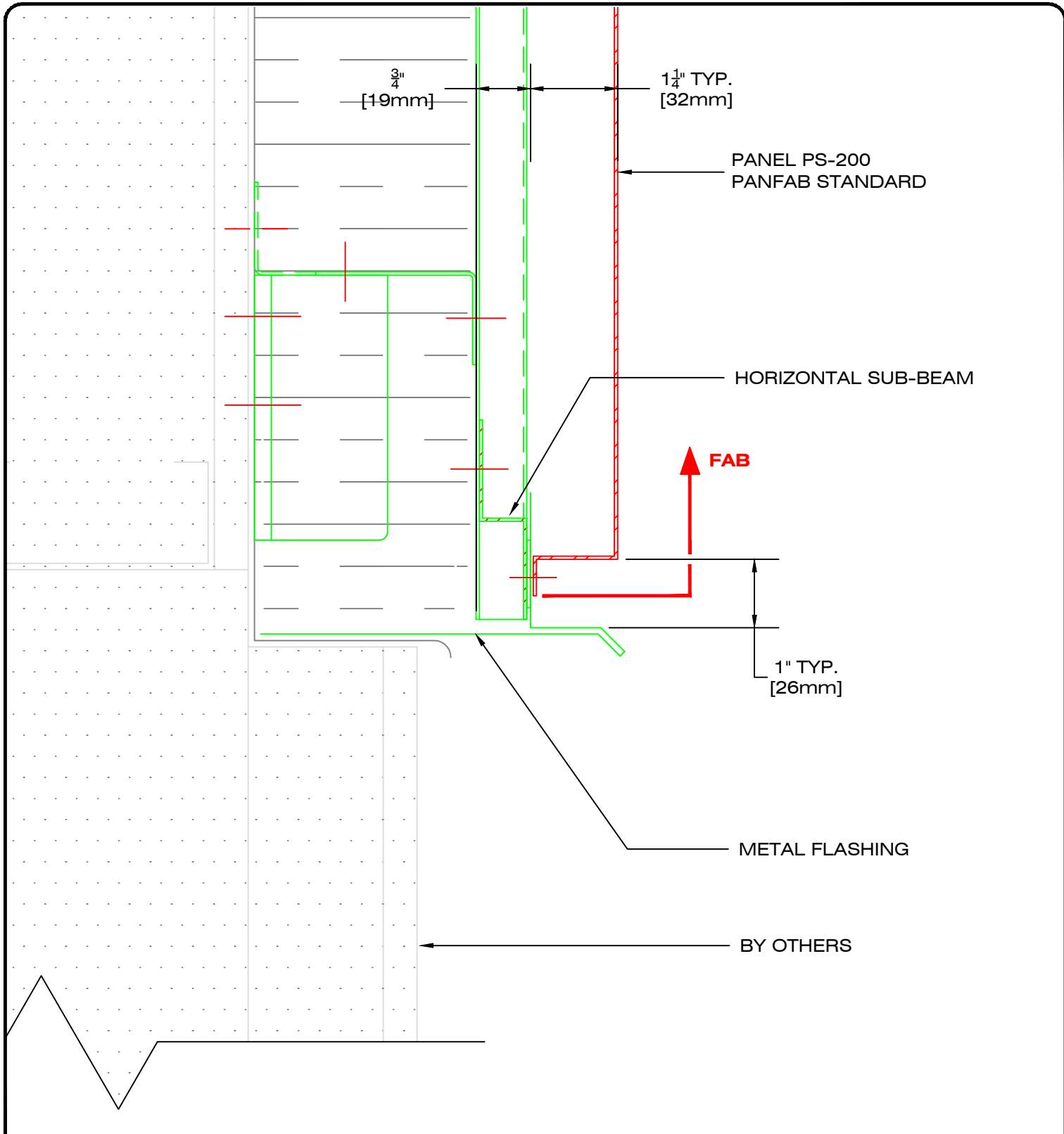


49, boul. de la Seigneurie Est
Blainville (Québec) J7C 4G6

Phone : (450) 430-3029

www.panfab.com

Project:		PS-200 PANFAB STANDARD	
Title:		SECTIONAL DETAIL - GENERAL	
Scale:	1:5	Page:	200210
Date:	AUGUST 2025		



49, boul. de la Seigneurie Est
Blainville (Québec) J7C 4G6

Phone : (450) 430-3029

www.panfab.com

Project:

PS-200 PANFAB STANDARD

Title:

SECTIONAL DETAIL - FOUNDATION

Scale:

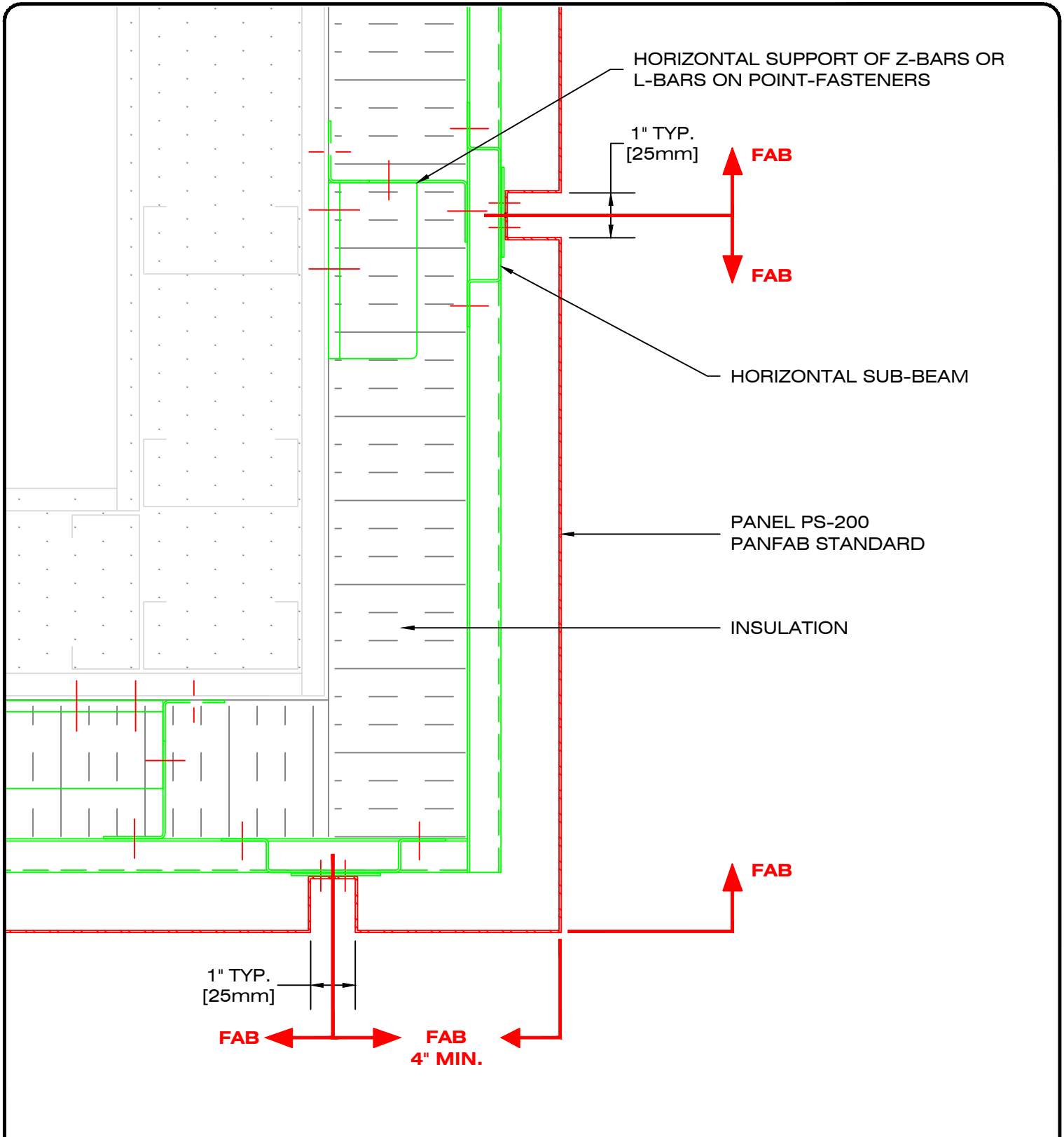
1:2

Date:

AUGUST 2025

Page:

200211

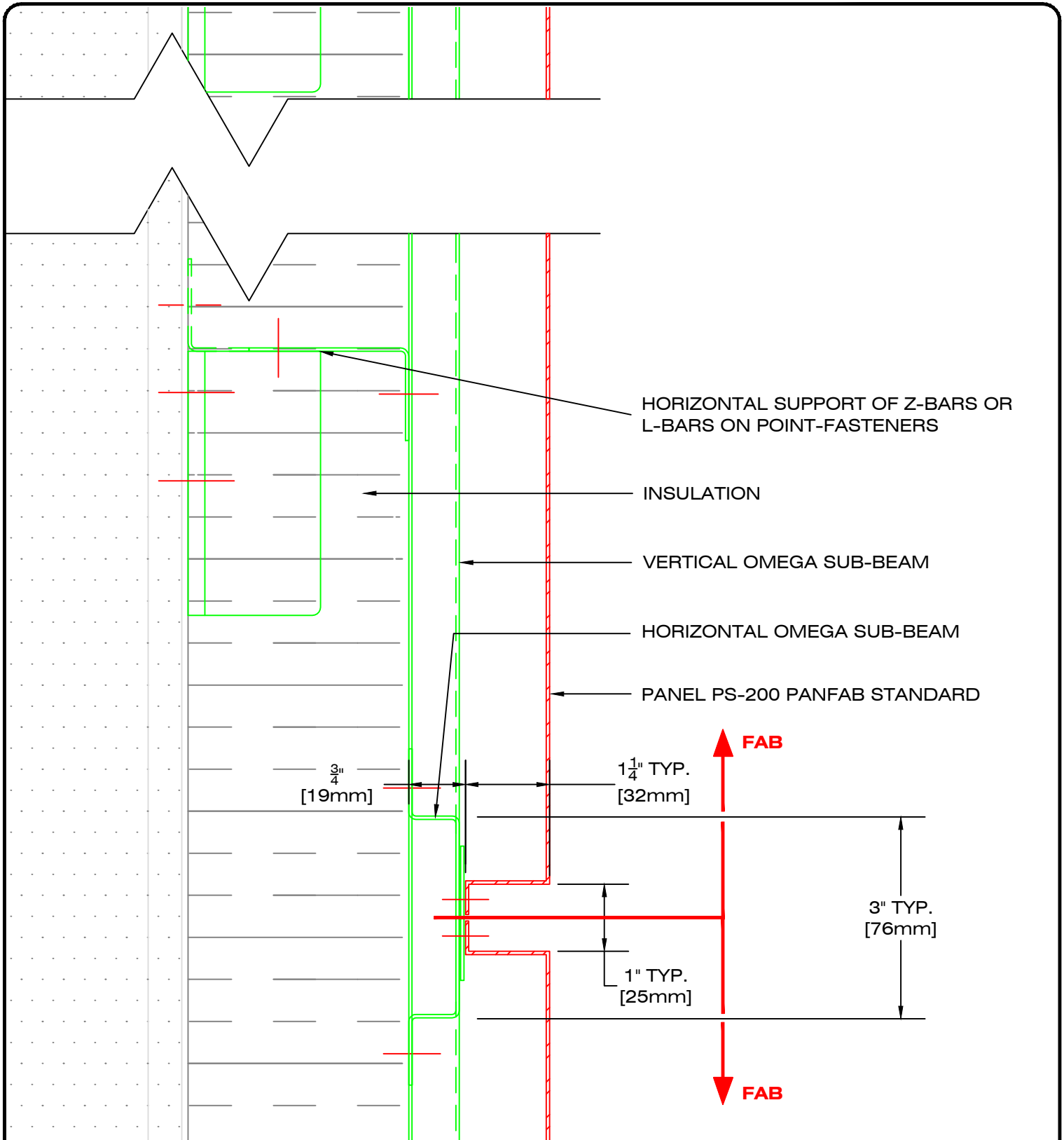


49, boul. de la Seigneurie Est
Blainville (Québec) J7C 4G6

Phone : (450) 430-3029

www.panfab.com

Project:		PS-200 PANFAB STANDARD	
Title:		SECTIONAL DETAIL - SOFFIT RETURN	
Scale:	1:3	Page:	200212
Date:	AUGUST 2025		

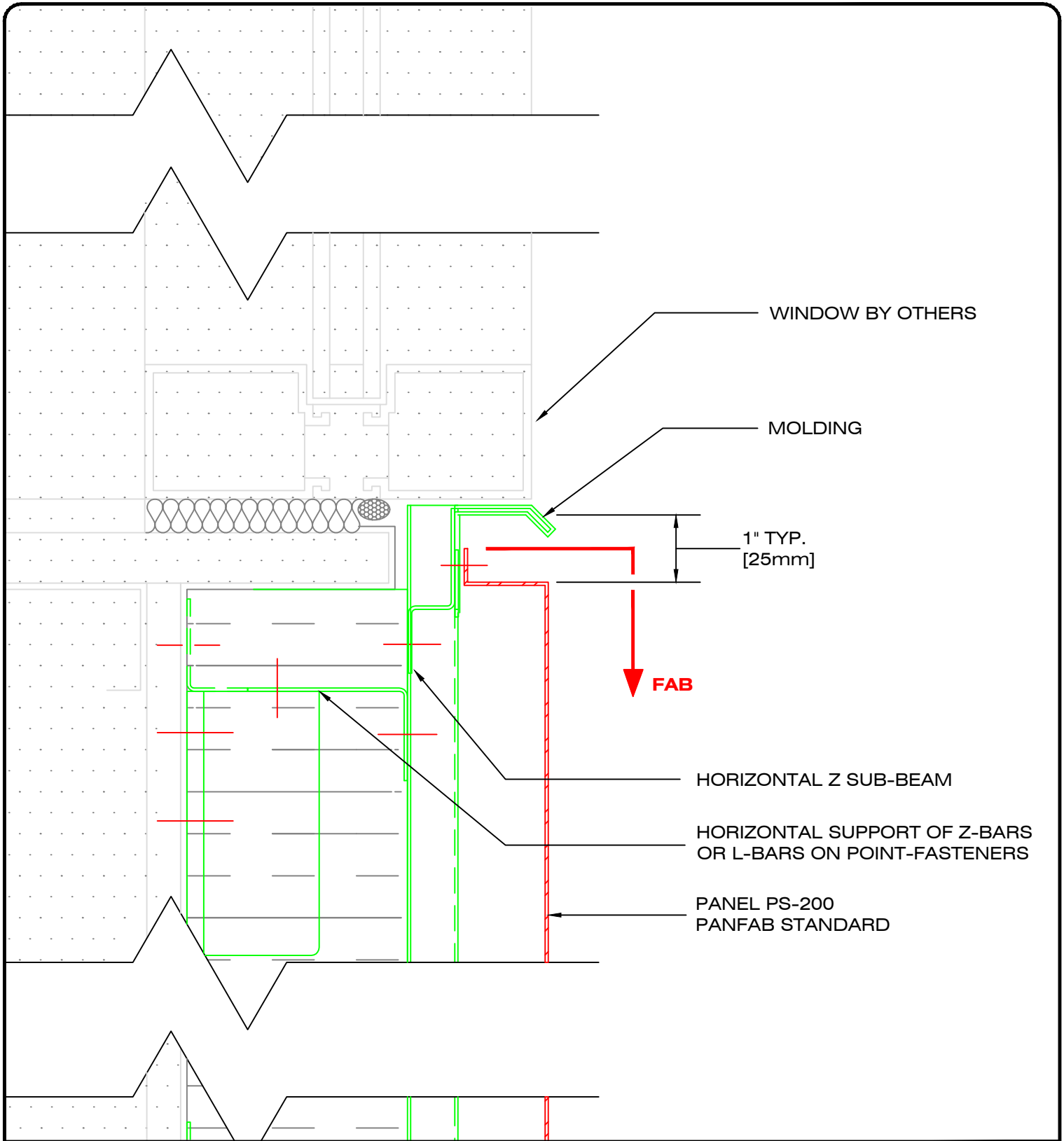


49, boul. de la Seigneurie Est
Blainville (Québec) J7C 4G6

Phone : (450) 430-3029

www.panfab.com

Project:		PS-200 PANFAB STANDARD	
Title:		SECTIONAL DETAIL - HORIZONTAL JOINT	
Scale:	1:2	Page:	200220
Date:	AUGUST 2025		



49, boul. de la Seigneurie Est
Blainville (Québec) J7C 4G6

Phone : (450) 430-3029

www.panfab.com

Project:

PS-200 PANFAB STANDARD

Title:

SECTIONAL DETAIL - WINDOW RELIEF

Scale:

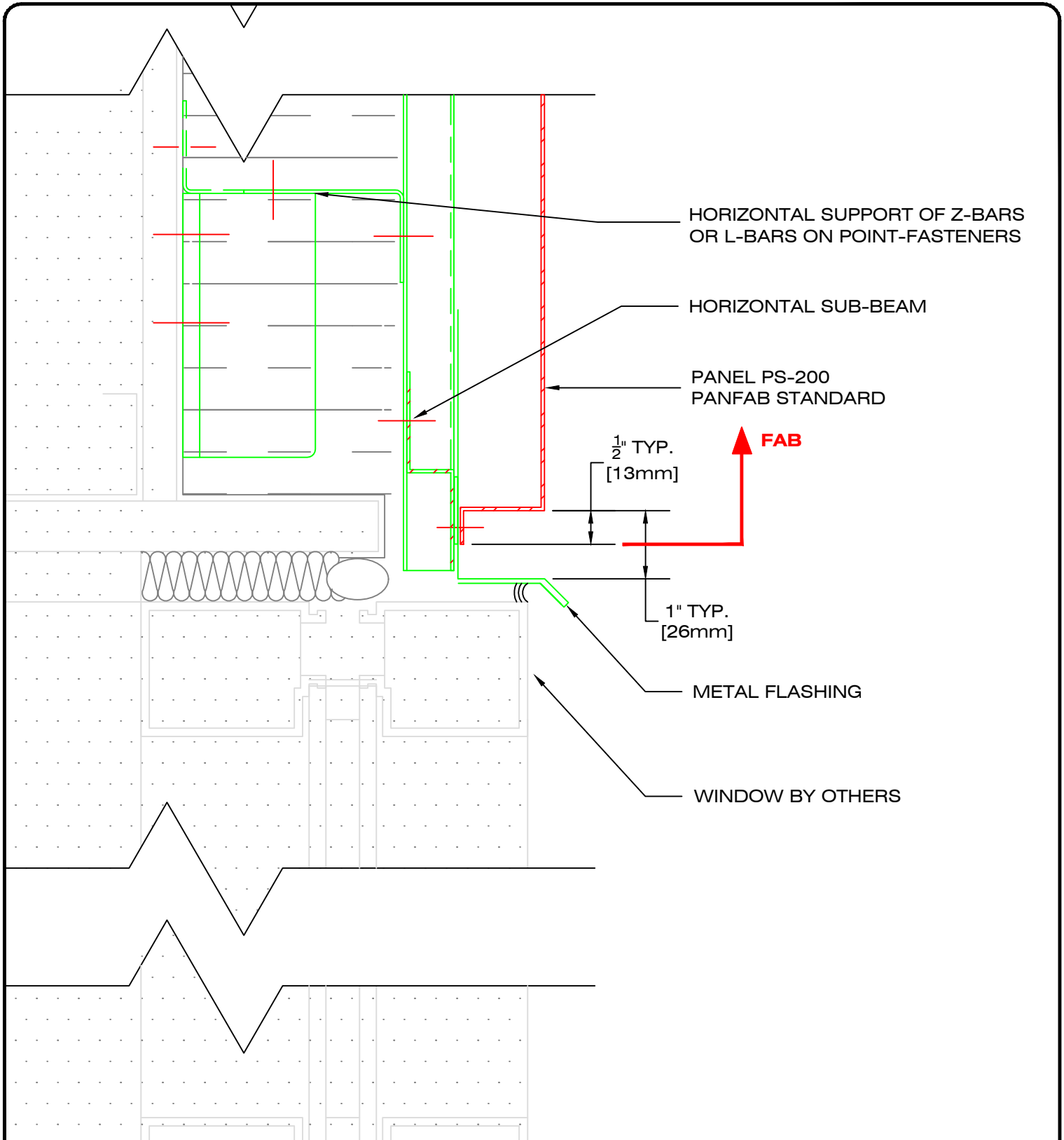
1:2

Page:

200230

Date:

AUGUST 2025

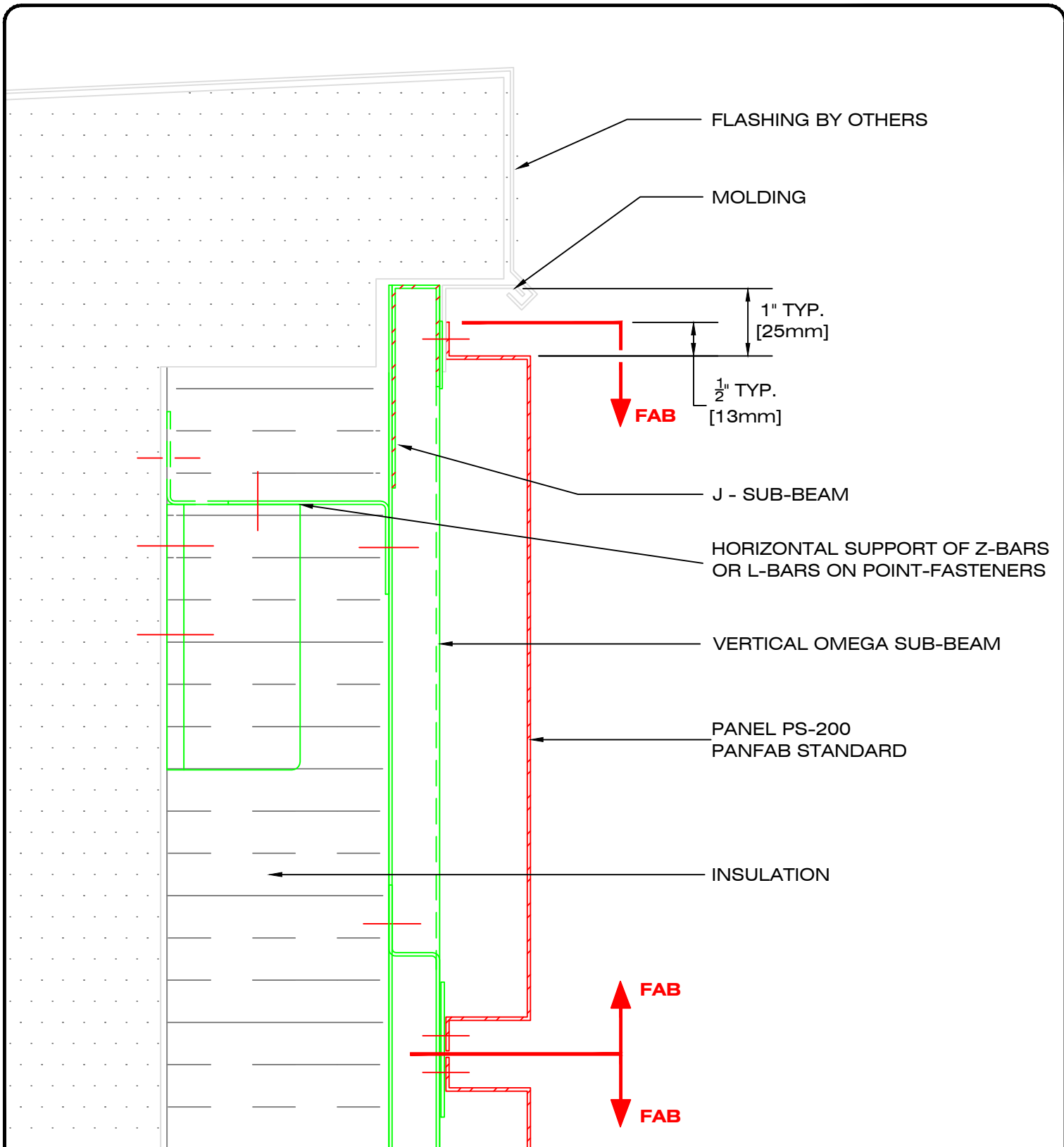


49, boul. de la Seigneurie Est
Blainville (Québec) J7C 4G6

Phone : (450) 430-3029

www.panfab.com

Project:		PS-200 PANFAB STANDARD
Title:		SECTIONAL DETAIL - WINDOW LINTEL
Scale:	1:2	Page: 200240
Date:	AUGUST 2025	



49, boul. de la Seigneurie Est
Blainville (Québec) J7C 4G6

Phone : (450) 430-3029

www.panfab.com

Project:

PS-200 PANFAB STANDARD

Title:

SECTIONAL DETAIL - PARAPET

Scale:

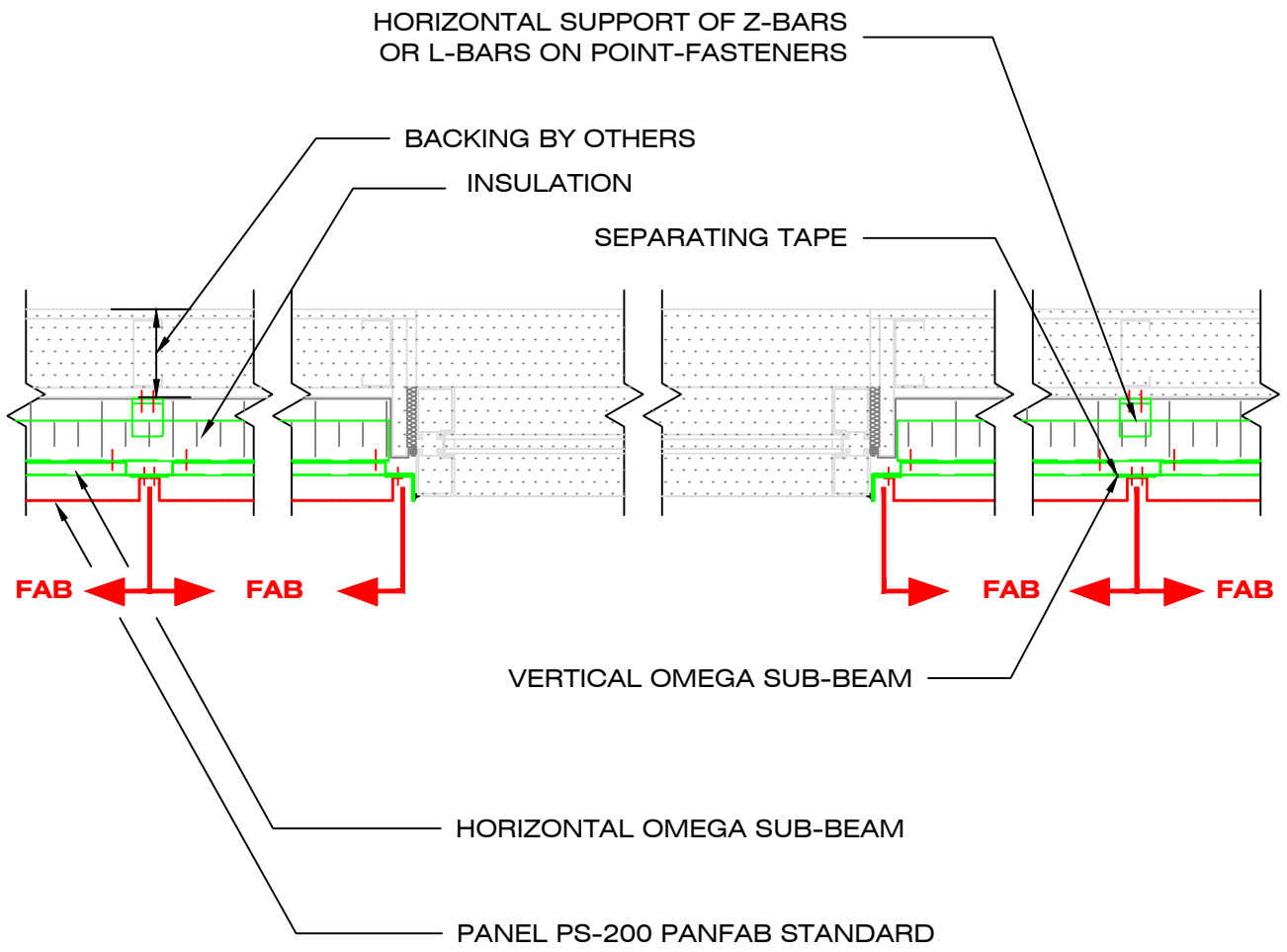
1:2

Date:

AUGUST 2025

Page:

200250



49, boul. de la Seigneurie Est
 Blainville (Québec) J7C 4G6

Phone : (450) 430-3029

www.panfab.com

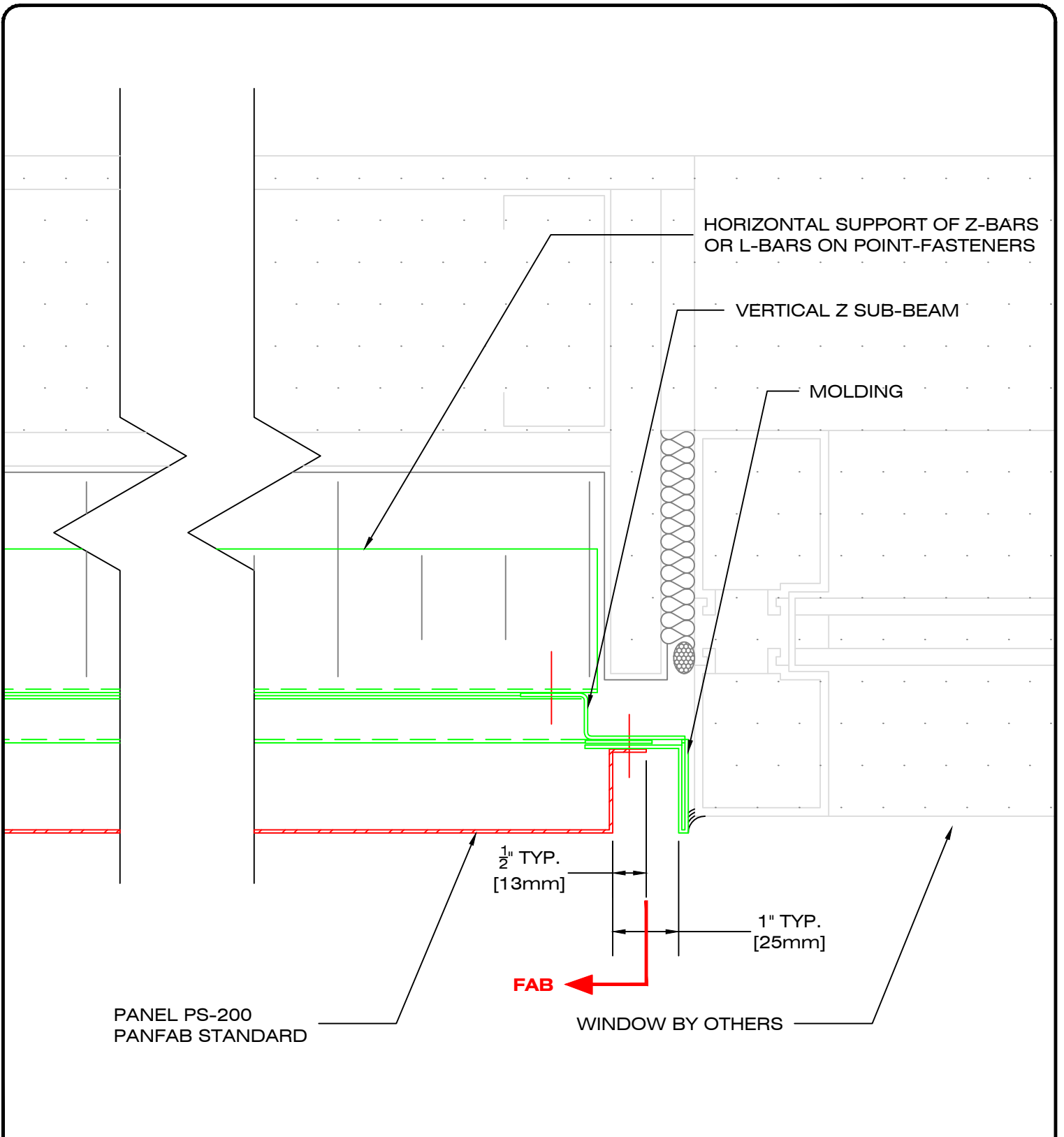
Project:
 PS-200 PANFAB STANDARD

Title:
 PLAN VIEW

Scale:
 1:10

Date:
 AUGUST 2025

Page:
 200300



49, boul. de la Seigneurie Est
Blainville (Québec) J7C 4G6

Phone : (450) 430-3029

www.panfab.com

Project:

PS-200 PANFAB STANDARD

Title:

PLAN DETAIL - JAMB AND WINDOW

Scale:

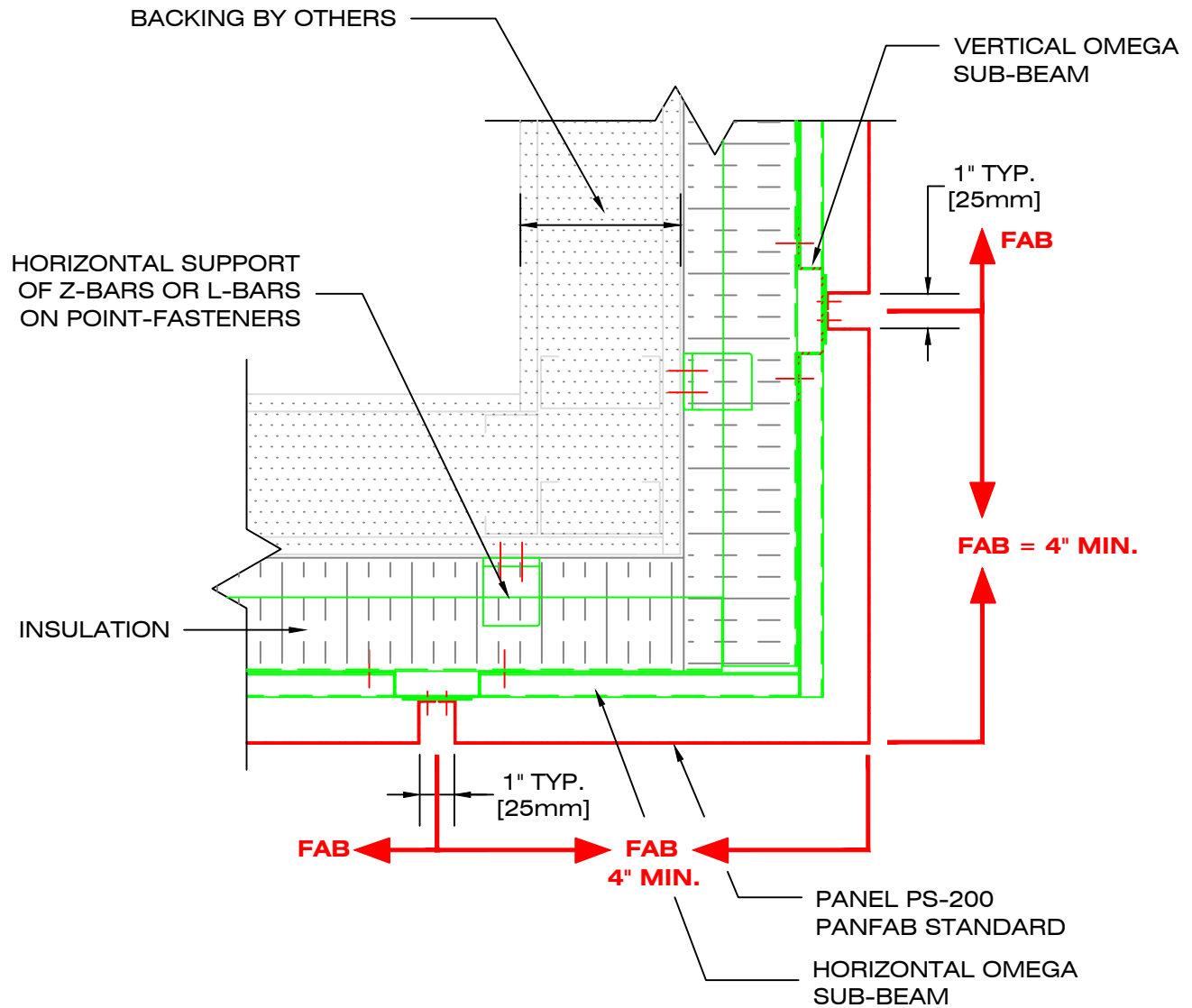
1:2

Date:

AUGUST 2025

Page:

200310



49, boul. de la Seigneurie Est
Blainville (Québec) J7C 4G6

Phone : (450) 430-3029

www.panfab.com

Project:

PS-200 PANFAB STANDARD

Title:

PLAN DETAIL - EXTERIOR CORNER PANEL

Scale:

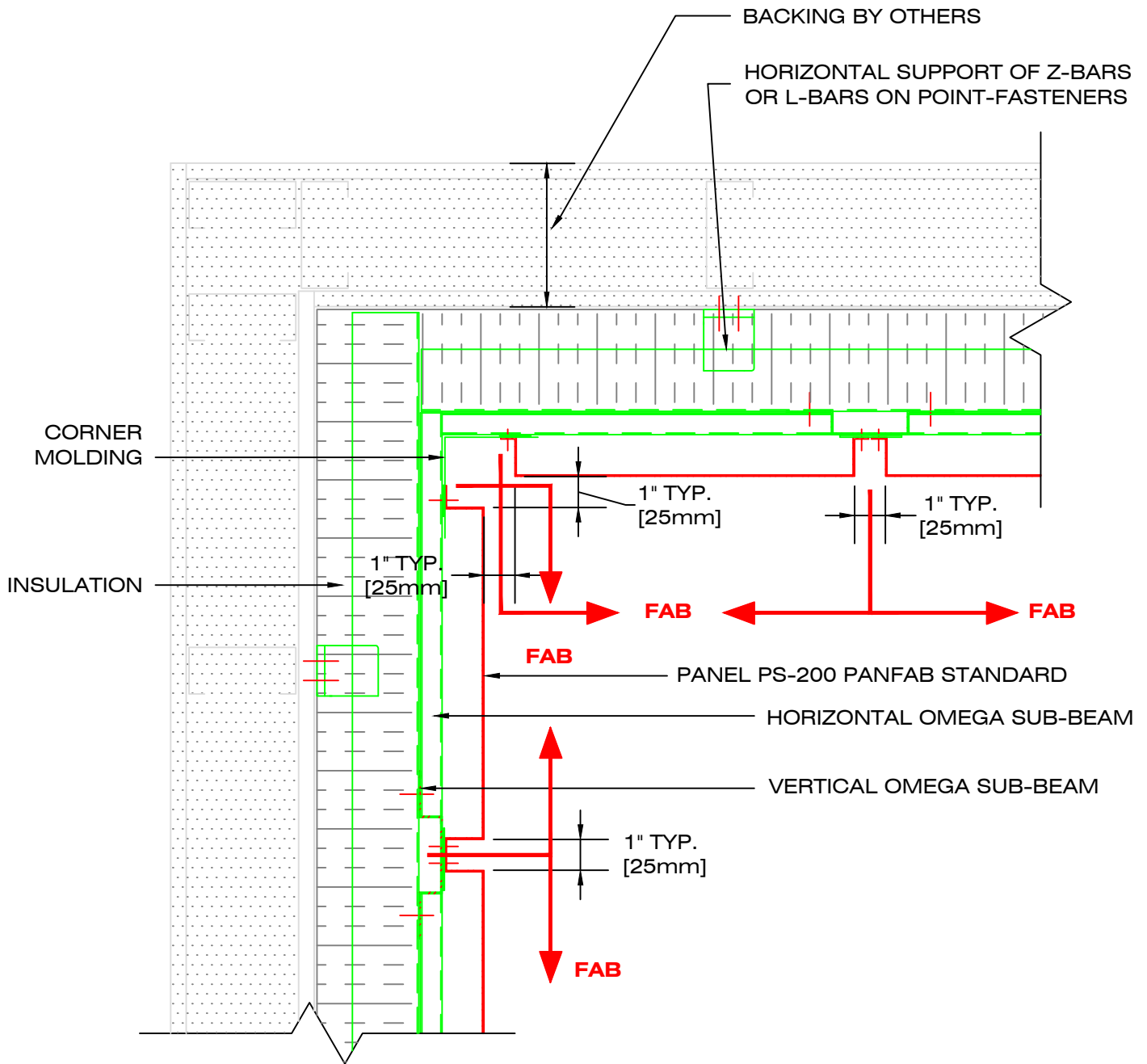
1:5

Page:

200320

Date:

AUGUST 2025



49, boul. de la Seigneurie Est
Blainville (Québec) J7C 4G6

Phone : (450) 430-3029

www.panfab.com

Project:

PS-200 PANFAB STANDARD

Title:

PLAN DETAIL - INTERIOR CORNER PANEL

Scale:

1:5

Page:

200330

Date:

AUGUST 2025