

Usage: Modular surface grid.

Description: Custom-made aluminum plate-style paneling $\frac{1}{8}$ " = 3.0mm visible exposed edges with extrusions welded to the back. Visible screws at the bottom of the joint. Depth $1\frac{1}{4}$ " = 32mm / Joint $\frac{3}{4}$ " = 19mm. Usual maximum dimensions = 48" x 120" c/c attached. Special maximum dimensions with D-MAX finish = 58" x 120" c/c attached. (Optimal width dimensions ≤ 19 ", ≤ 29 ", 48" to 58" ; optimal length dimensions ≤ 60 ", 100" to 120" ; non-optimal in width 19" to 24", 29 to 48", non-optimal in length 60" to 100".)

Finish options:

- D-MAX pre-painted finish : Alum 3.0mm, alloy 5754H42, pre-painted finish type PVDF Kynar 500 70% such as Duranar XL, 7 colours in inventory : White RAL9016, Jupiter RAL9006, Neptune, Alpha Centauri, Charcoal, Rigel-2 and Black RAL9005.
- Acrylic urethane painted finish : Alum 3.0mm, alloy 3003H14, unlimited choice of colours as per Sico, BM, RAL, QC charts.

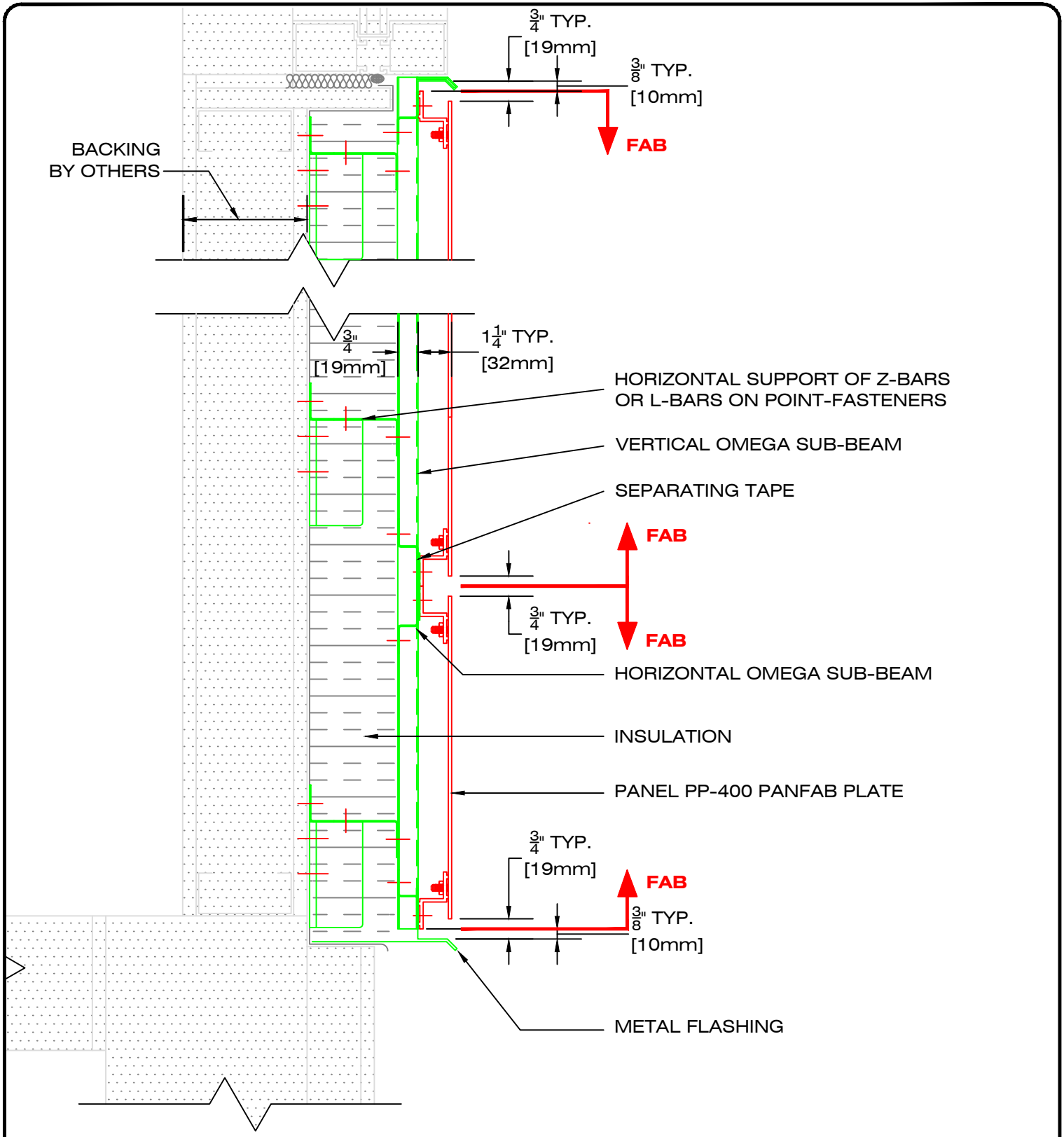


49, boul. de la Seigneurie Est
Blainville (Québec) J7C 4G6

Phone : (450) 430-3029

www.panfab.com

Project:		PP-400 PANFAB PLATE	
Title:		ISOMETRIC VIEW	
Scale:	1 : 60	Page:	400200
Date:	AUGUST 2025		

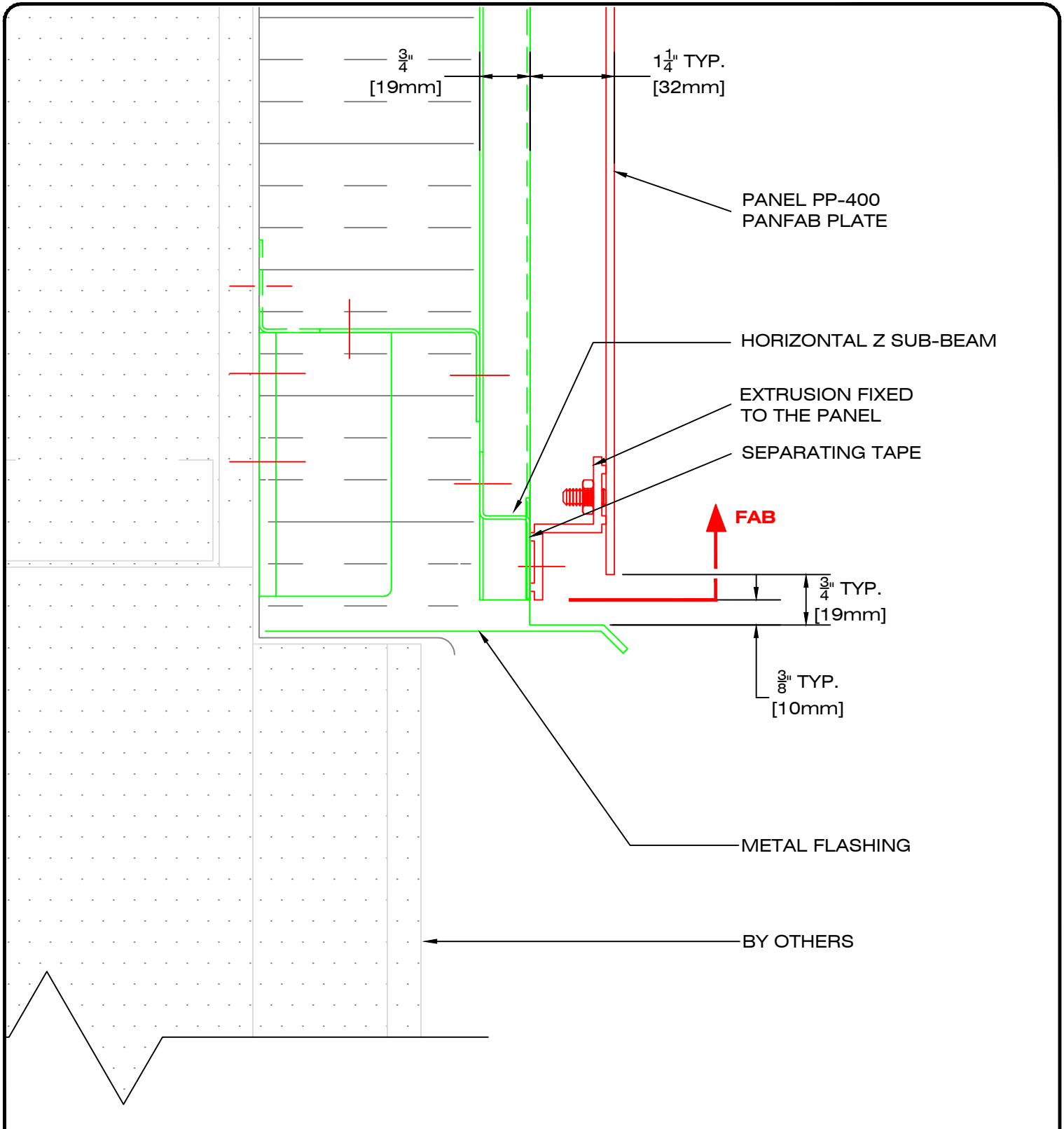


49, boul. de la Seigneurie Est
Blainville (Québec) J7C 4G6

Phone : (450) 430-3029

www.panfab.com

Project:		PP-400 PANFAB PLATE	
Title:		SECTIONAL DETAIL - GENERAL	
Scale:	1:5	Page:	400210
Date:	AUGUST 2025		

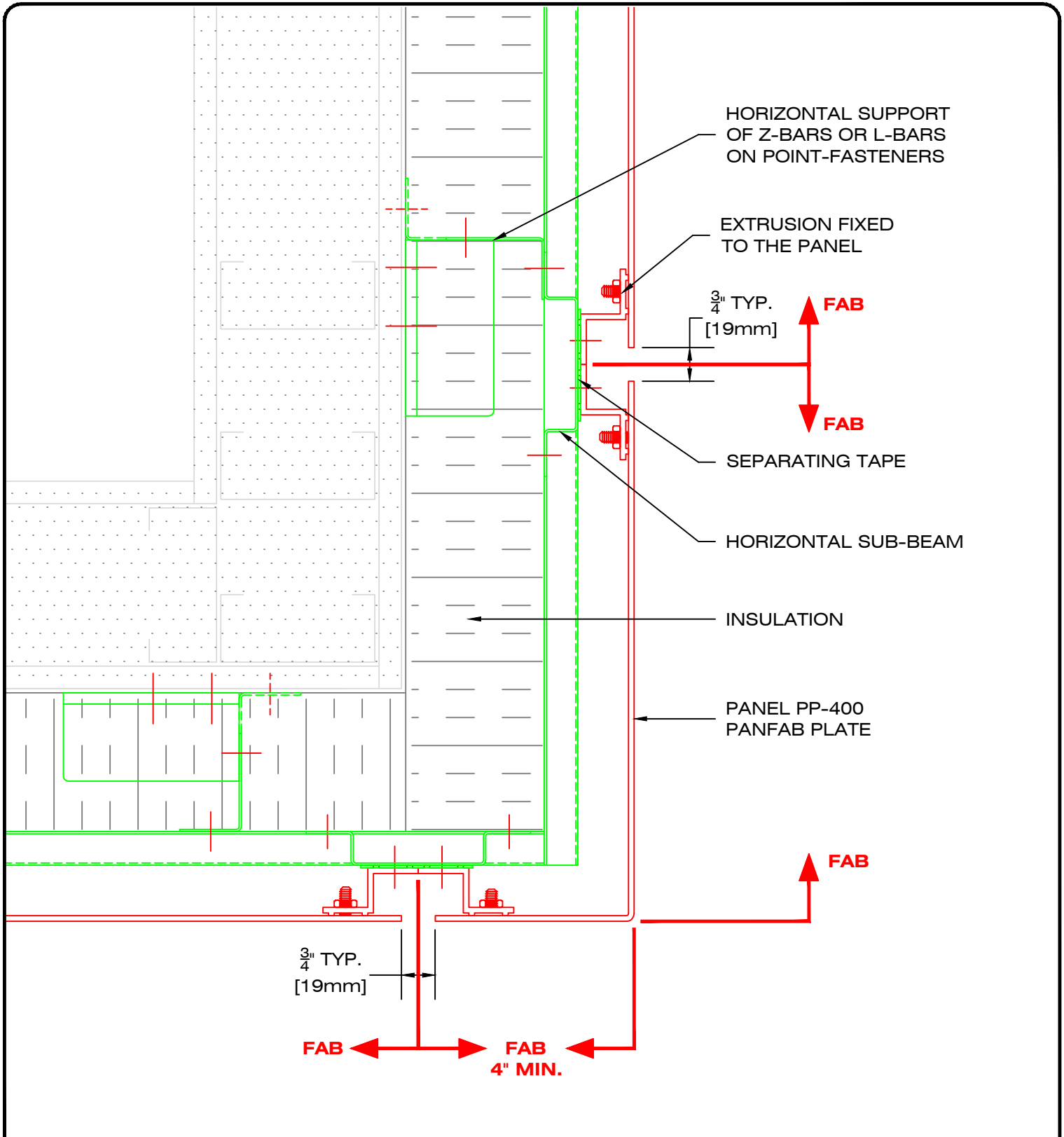


49, boul. de la Seigneurie Est
Blainville (Québec) J7C 4G6

Phone : (450) 430-3029

www.panfab.com

Project:		PP-400 PANFAB PLATE
Title:		SECTIONAL DETAIL - FOUNDATION
Scale:	1:2	Page: 400211
Date:	AUGUST 2025	



49, boul. de la Seigneurie Est
Blainville (Québec) J7C 4G6

Phone : (450) 430-3029

www.panfab.com

Project:

PP-400 PANFAB PLATE

Title:

SECTIONAL DETAIL - SOFFIT RETURN

Scale:

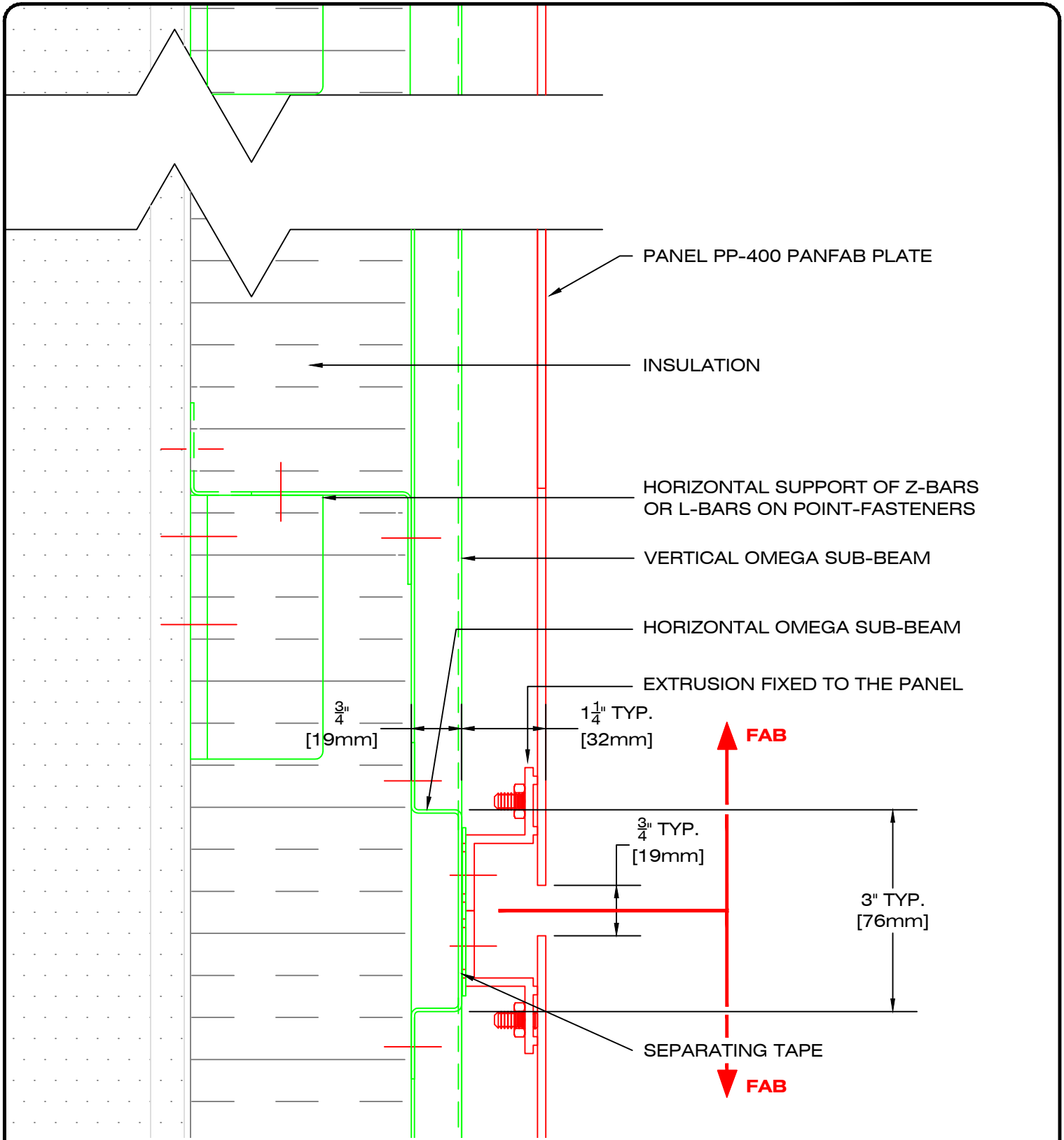
1:3

Page:

400212

Date:

AUGUST 2025

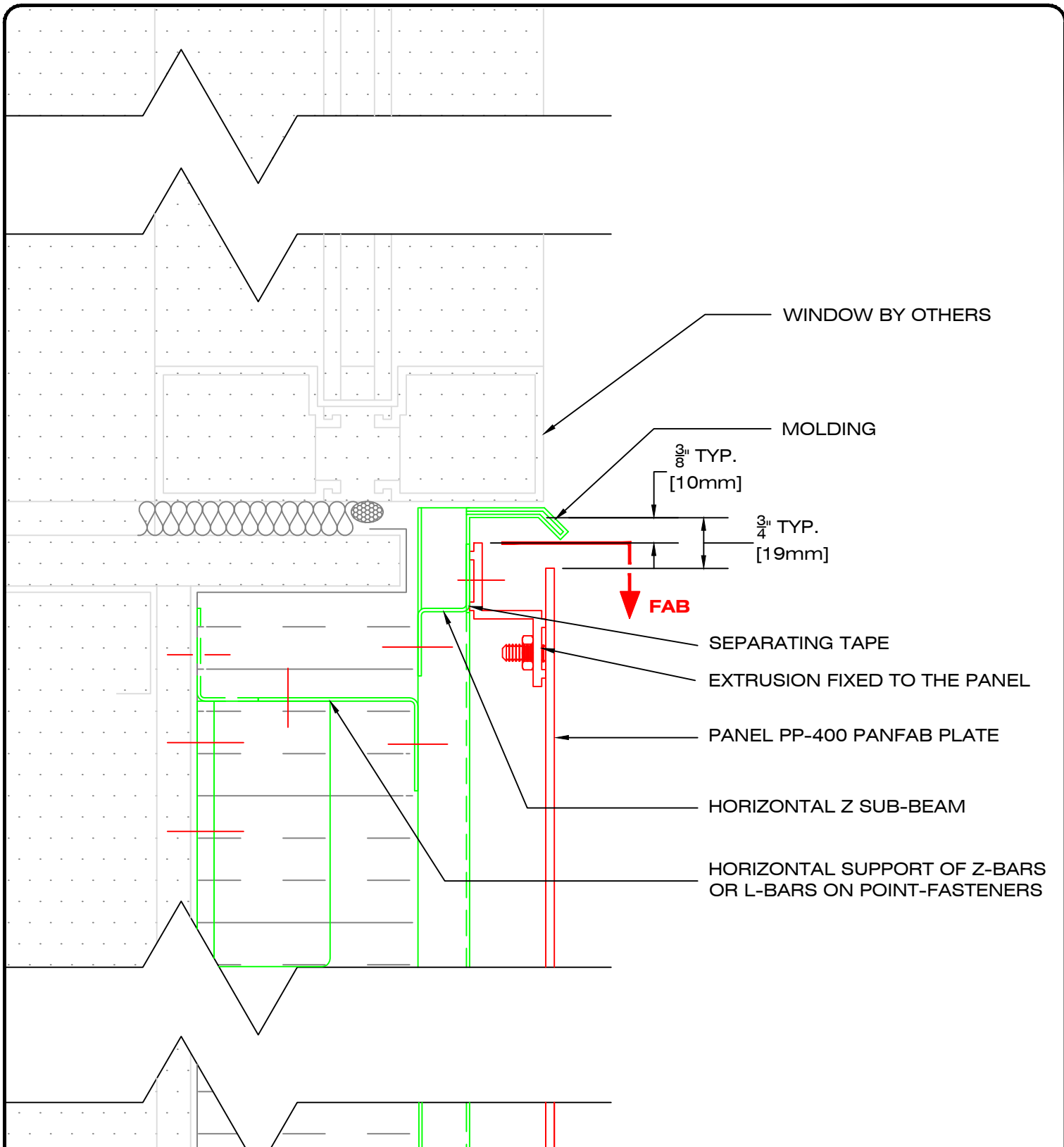


49, boul. de la Seigneurie Est
Blainville (Québec) J7C 4G6

Phone : (450) 430-3029

www.panfab.com

Project:		PP-400 PANFAB PLATE
Title:		SECTIONAL DETAIL - HORIZONTAL JOINT
Scale:	1:2	Page: 400220
Date:	AUGUST 2025	

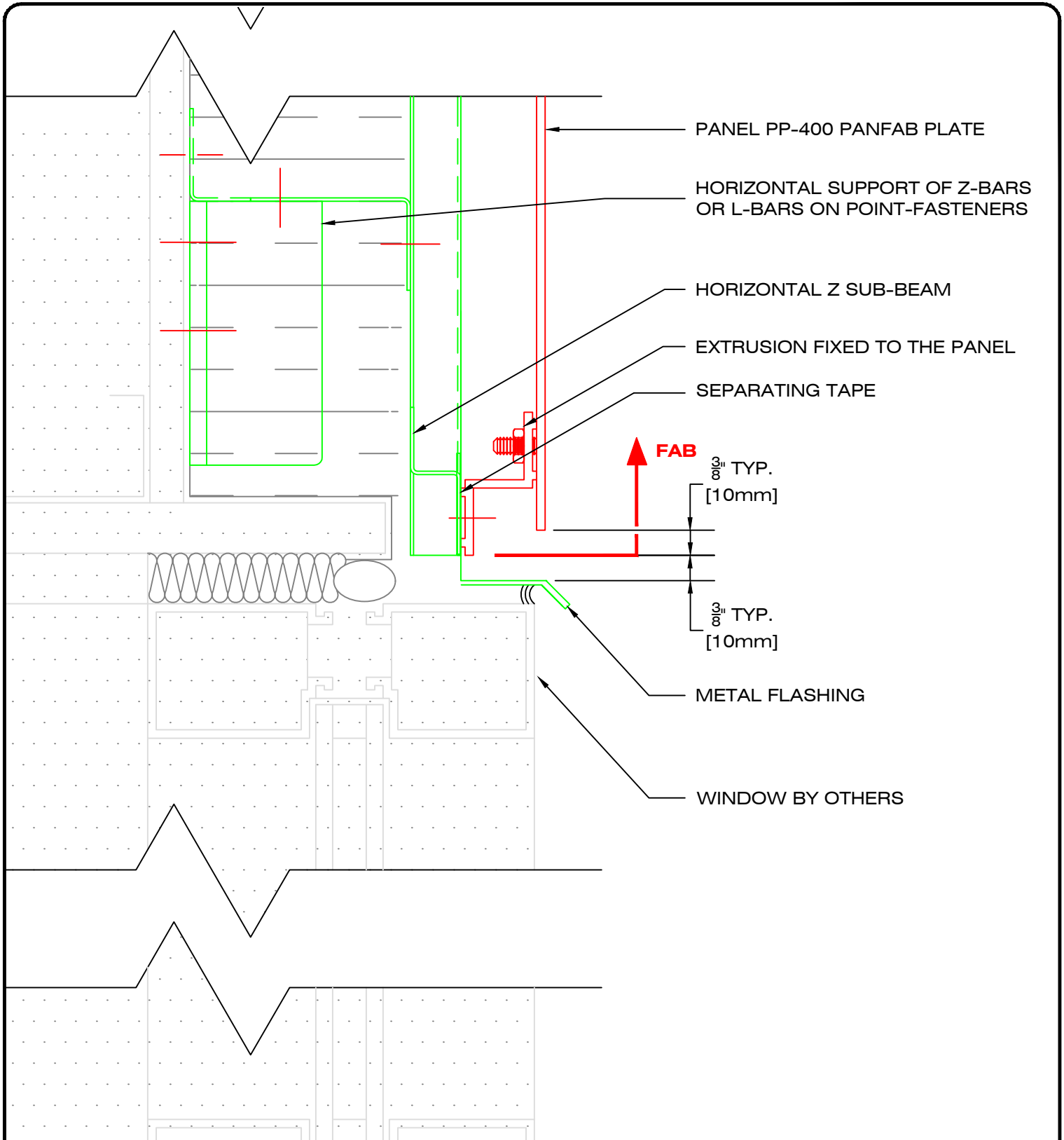


49, boul. de la Seigneurie Est
Blainville (Québec) J7C 4G6

Phone : (450) 430-3029

www.panfab.com

Project:		PP-400 PANFAB PLATE	
Title:		SECTIONAL DETAIL - WINDOW RELIEF	
Scale:	1:2	Page:	400230
Date:	AUGUST 2025		



49, boul. de la Seigneurie Est
Blainville (Québec) J7C 4G6

Phone : (450) 430-3029

www.panfab.com

Project:

PP-400 PANFAB PLATE

Title:

SECTION DETAIL - WINDOW LINTEL

Scale:

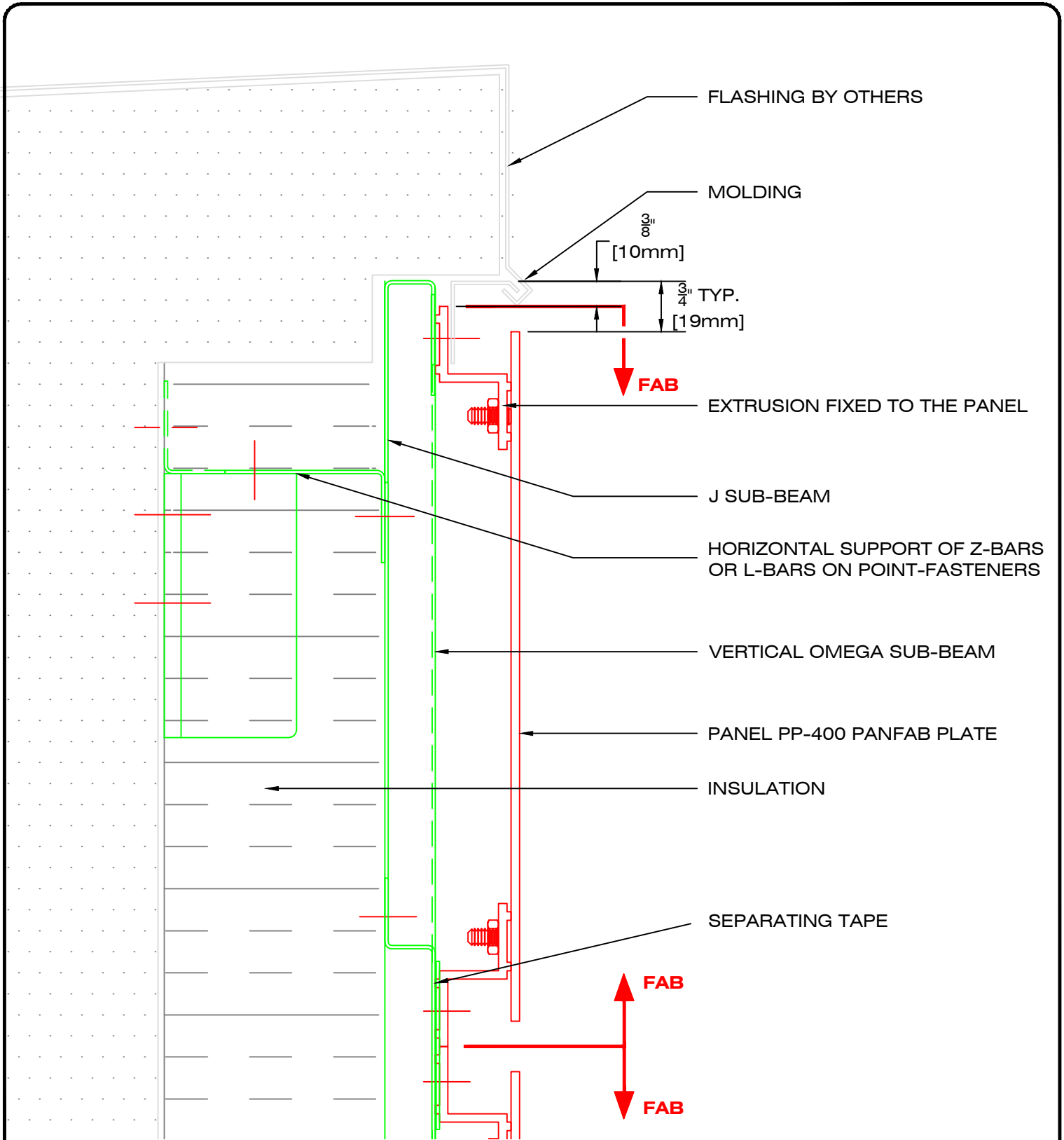
1:2

Page:

400240

Date:

AUGUST 2025



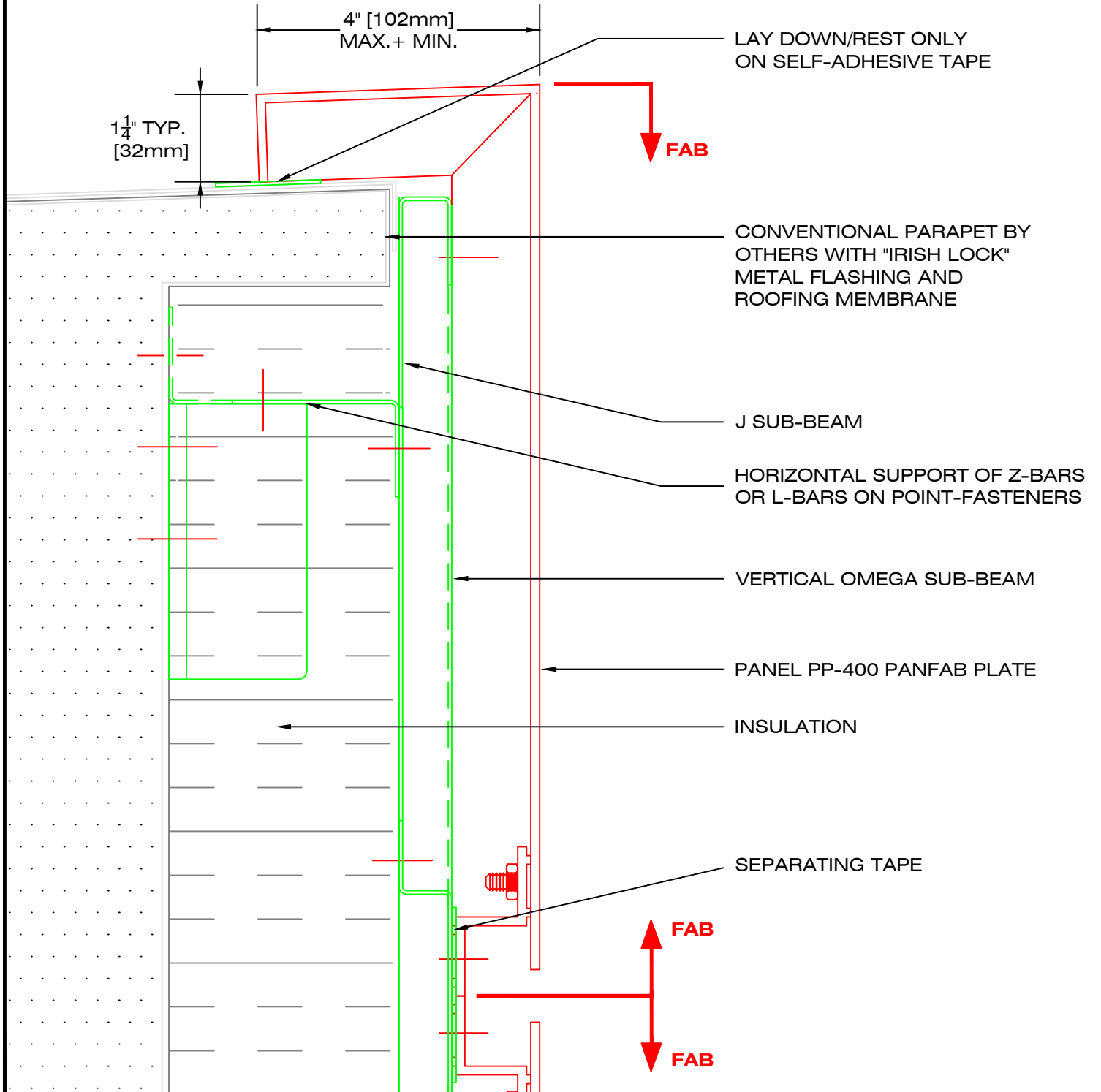
49, boul. de la Seigneurie Est
Blainville (Québec) J7C 4G6

Phone : (450) 430-3029

www.panfab.com

Project:		PP-400 PANFAB PLATE
Title:		SECTIONAL DETAIL - PARAPET OPTION "A"
Scale:	1:2	Page: 400250
Date:	AUGUST 2025	

NOTE : THIS OPTION IS ONLY AVAILABLE IF THE PANEL IS SMALLER THAN 60" IN LENGTH, WITH A VERTICAL HEIGHT OF LESS THAN 12". FOR CANOPIES OR WALL STRIP ON THE GROUND FLOOR ONLY. NOT AVAILABLE FOR UPPER FLOORS.

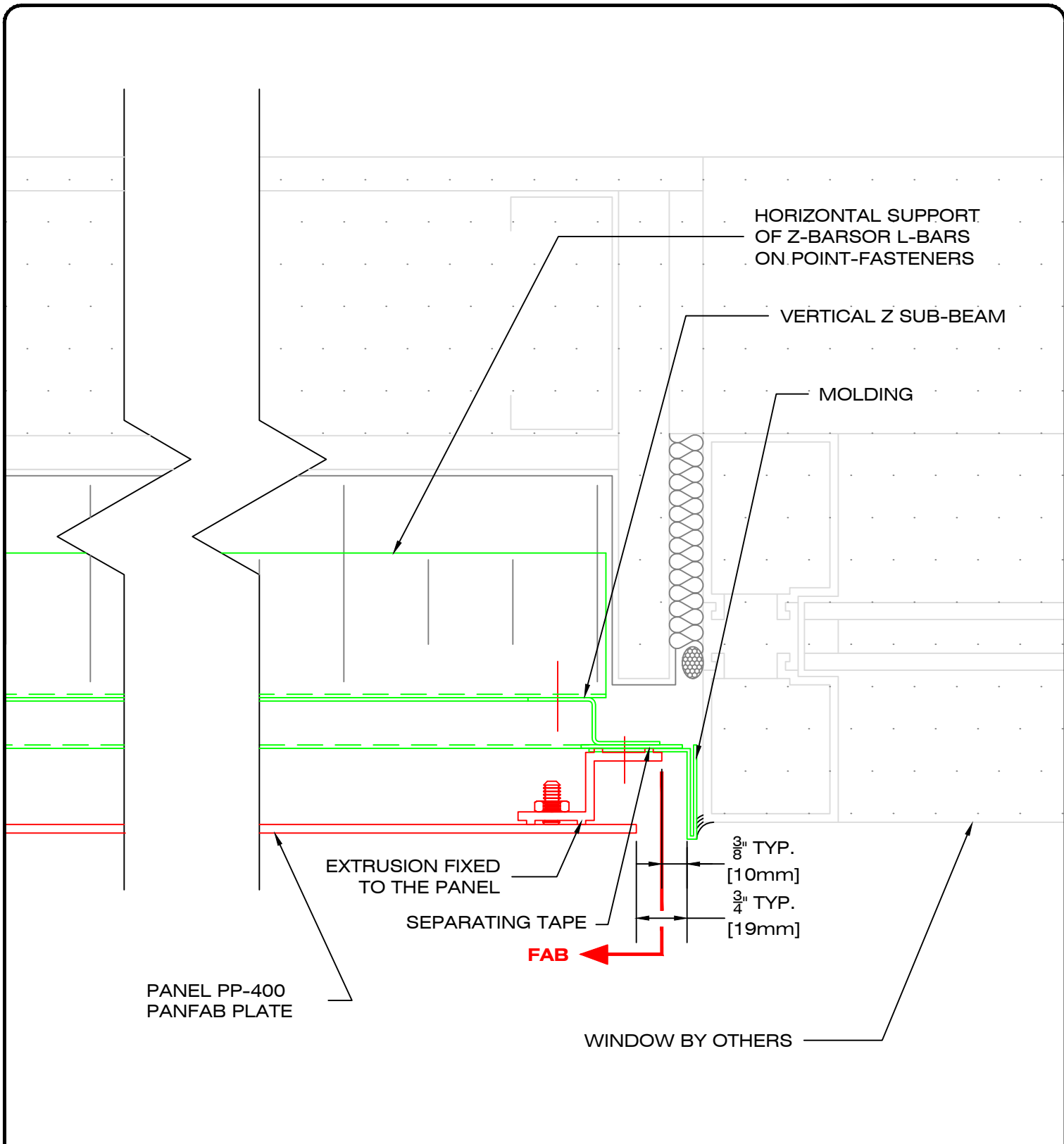


49, boul. de la Seigneurie Est
Blainville (Québec) J7C 4G6

Phone : (450) 430-3029

www.panfab.com

Project:		PP-400 PANFAB PLATE
Title:		SECTION DETAIL - PARAPET OPTION "B"
Scale:	1:2	Page: 400260
Date:	AUGUST 2025	

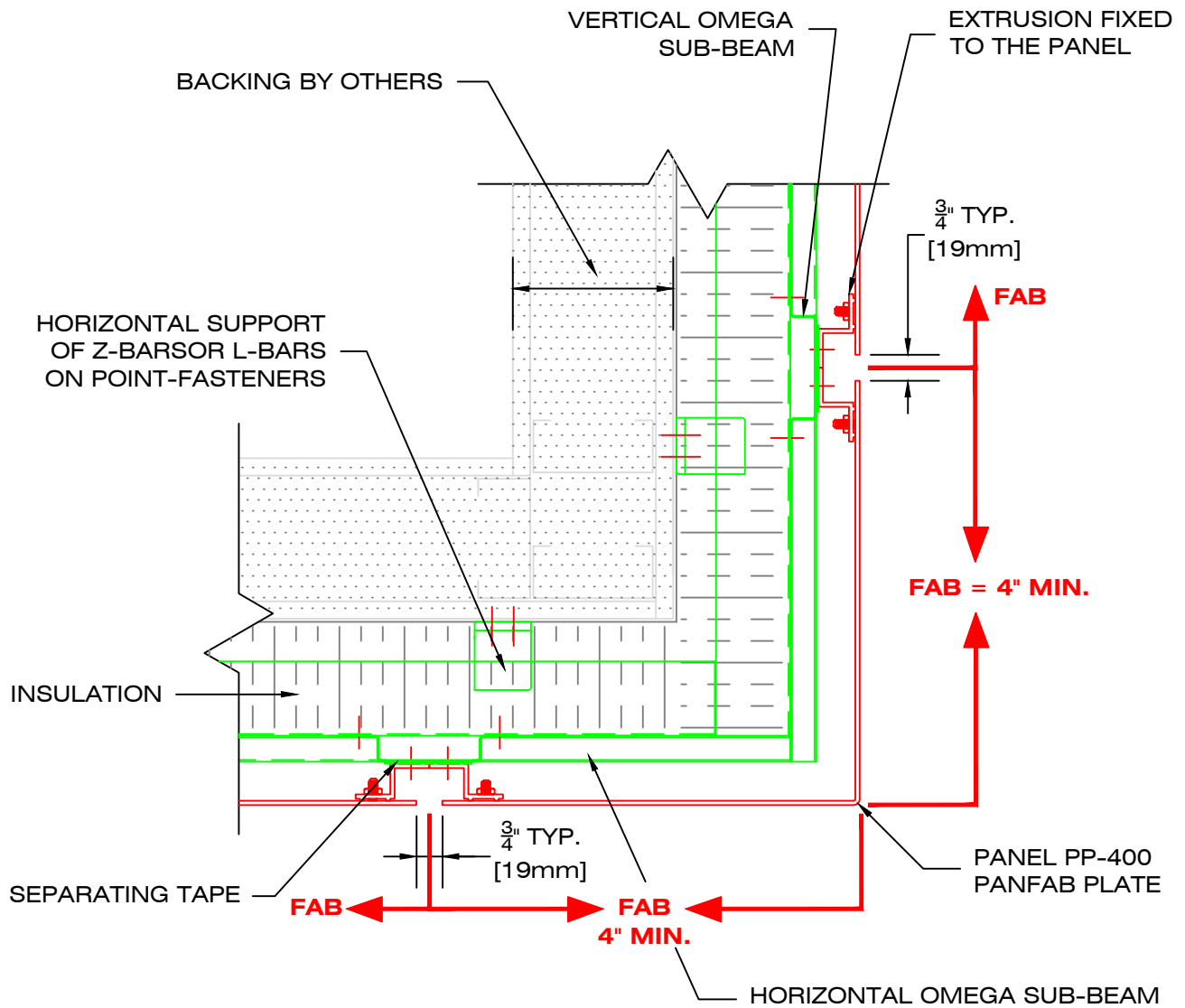


49, boul. de la Seigneurie Est
Blainville (Québec) J7C 4G6

Phone : (450) 430-3029

www.panfab.com

Project:		PP-400 PANFAB PLATE
Title:		PLAN DETAIL - JAMB AND WINDOW
Scale:	1:2	Page: 400310
Date:	AUGUST 2025	



49, boul. de la Seigneurie Est
Blainville (Québec) J7C 4G6

Phone : (450) 430-3029

www.panfab.com

Project:

PP-400 PANFAB PLATE

Title:

PLAN DETAIL - EXTERIOR CORNER PANEL

Scale:

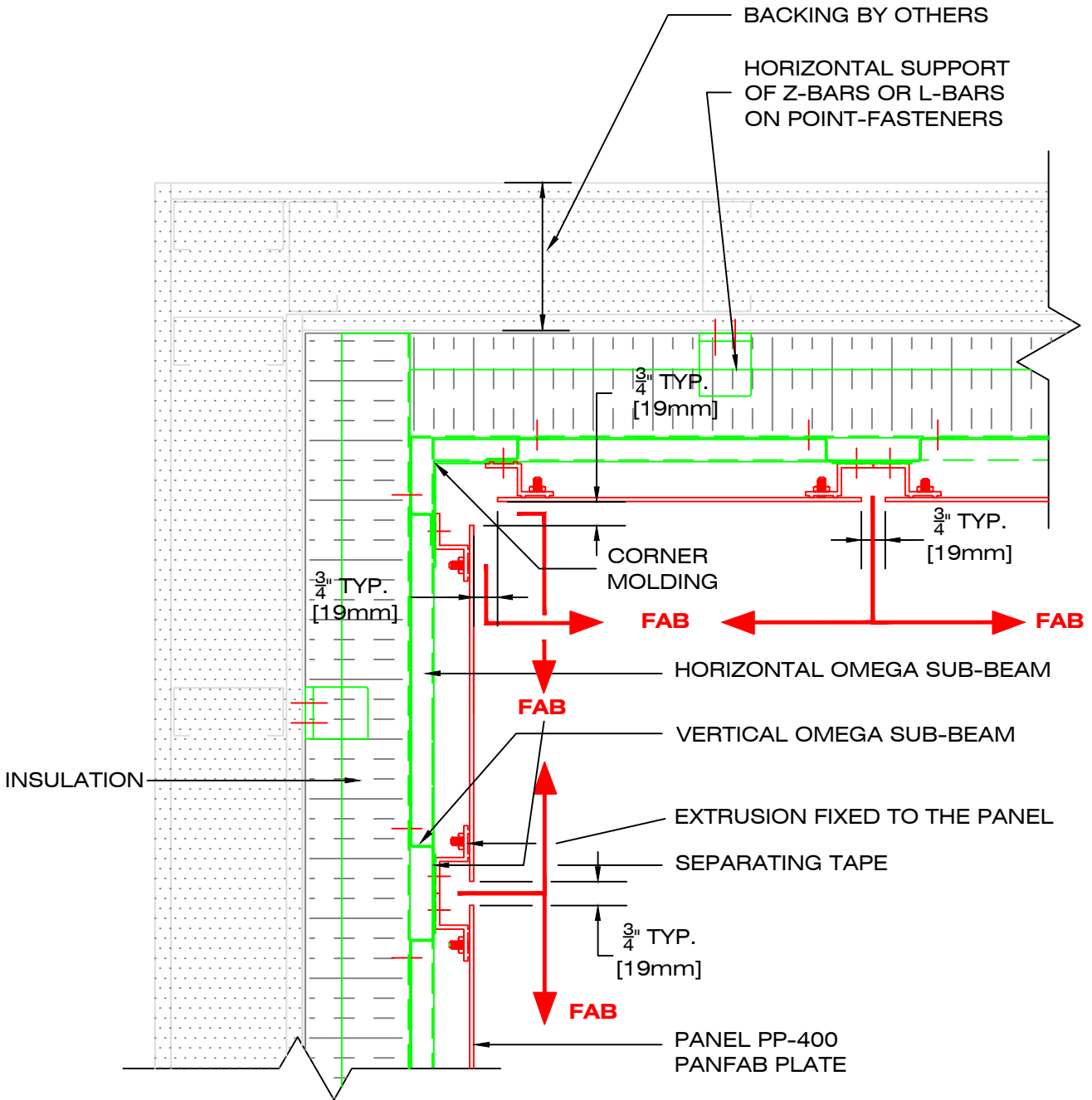
1:5

Page:

400320

Date:

AUGUST 2025



49, boul. de la Seigneurie Est
Blainville (Québec) J7C 4G6

Phone : (450) 430-3029

www.panfab.com

Project:

PP-400 PANFAB PLATE

Title:

PLAN DETAIL - INTERIOR CORNER PANEL

Scale:

1:5

Date:

AUGUST 2025

Page:

400330