

**Usage:** Modular surface grid, fine-joint panel (horizontal or vertical installation).

**Description:** Custom-made panel, cassette-style with folded edges and integrated hook.

Alum 2.0mm, depth  $1 \frac{1}{4}'' = 32\text{mm}$  / intermediate joints  $\frac{1}{8}'' = 3\text{mm}$ . Meeting joints  $\frac{3}{4}'' = 19\text{mm}$ . Invisible screws. Usual maximum dimensions in aluminum = 22" x 116" c/c attached. Special maximum dimensions with D-MAX finish = 22" x 120" c/c attached. (Optimal dimensions at 12", 18" to 22" x  $\leq 58''$ , 100" to 120" ; non-optimal <18" x 58" to 100".)

**Finish options:** -D-MAX pre-painted finish : Alum 2.0mm, alloy 5754H42, pre-painted finish type PVDF Kynar 500 70% such as Duranar XL, 7 colours in inventory : White RAL9016, Jupiter RAL9006, Neptune, Alpha Centauri, Charcoal, Rigel-2 and Black RAL9005.

-Acrylic urethane painted finish : Alum 2.0mm, alloy 3003H14, unlimited choice of colours as per Sico, BM, RAL, QC charts



49, boul. de la Seigneurie Est  
Blainville (Québec) J7C 4G6

Phone : (450) 430-3029

[www.panfab.com](http://www.panfab.com)

Project:

PL-700 PANFAB LINE

Title:

ISOMETRIC VIEW

Scale:

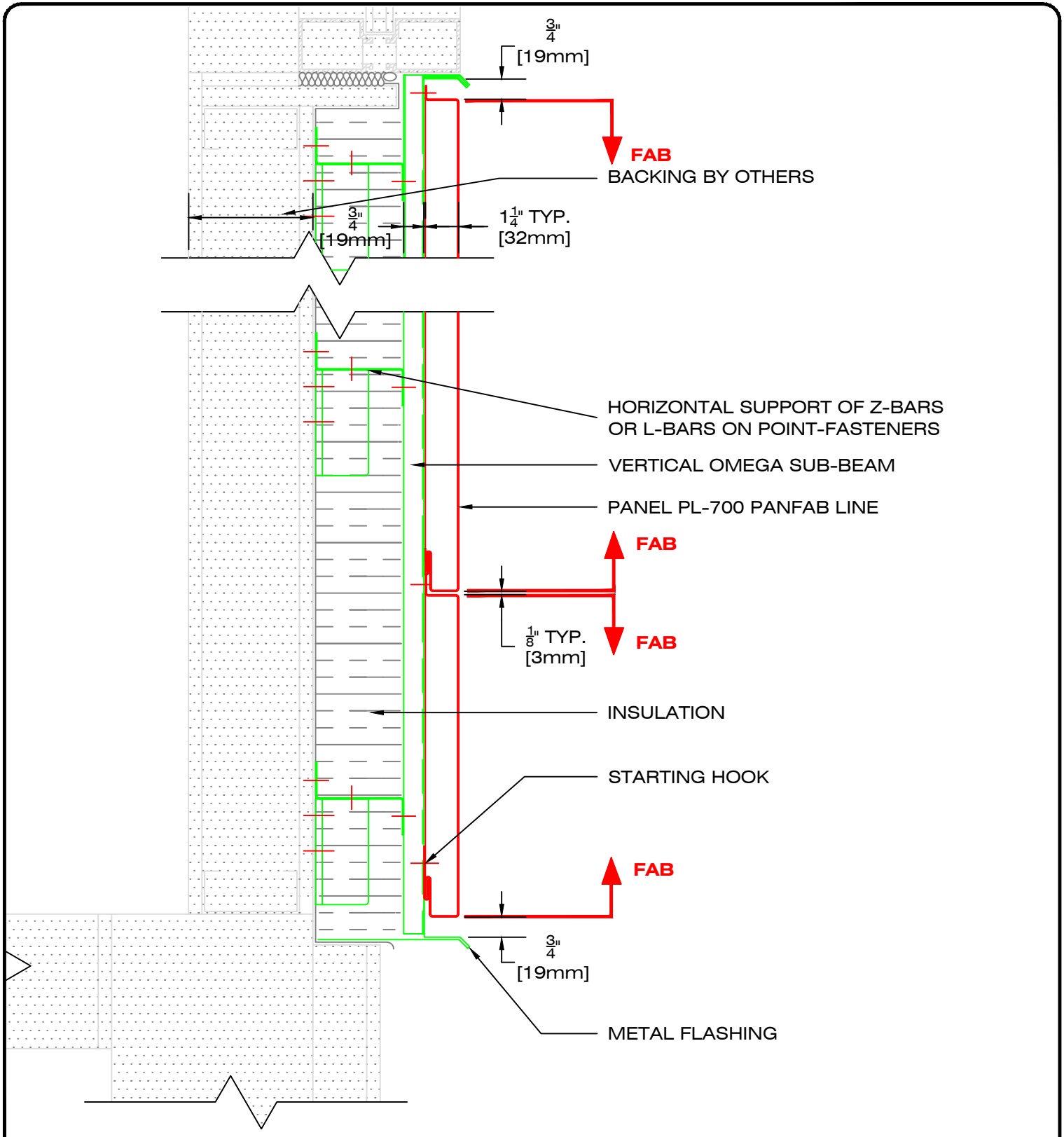
1 : 60

Page:

700200

Date:

NOVEMBER 2025



49, boul. de la Seigneurie Est  
Blainville (Québec) J7C 4G6

Phone : (450) 430-3029

[www.panfab.com](http://www.panfab.com)

Project:

PL-700 PANFAB LINE

Title:

SECTIONAL DETAIL - GENERAL

Scale:

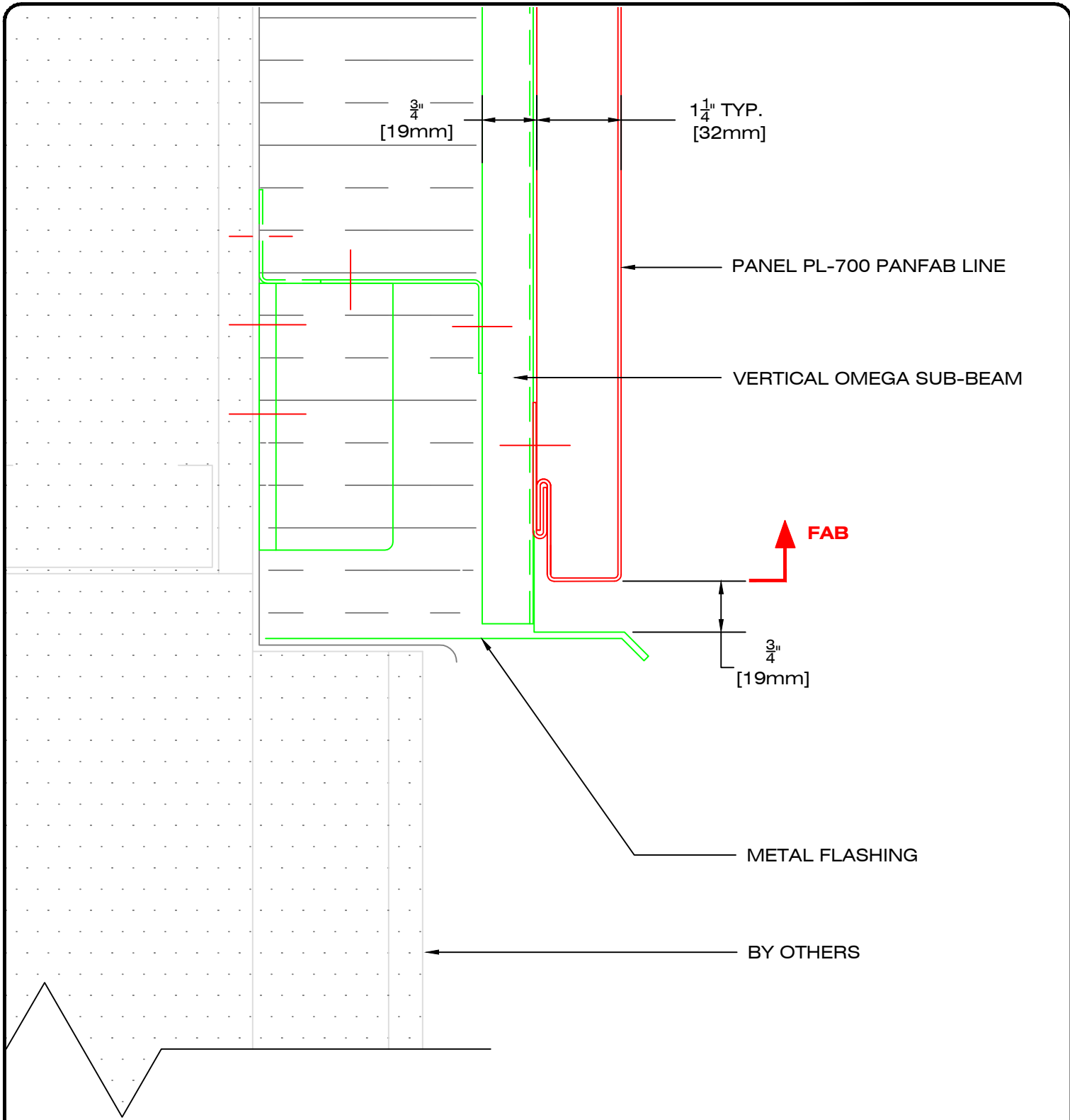
1:5

Page:

700210

Date:

NOVEMBER 2025

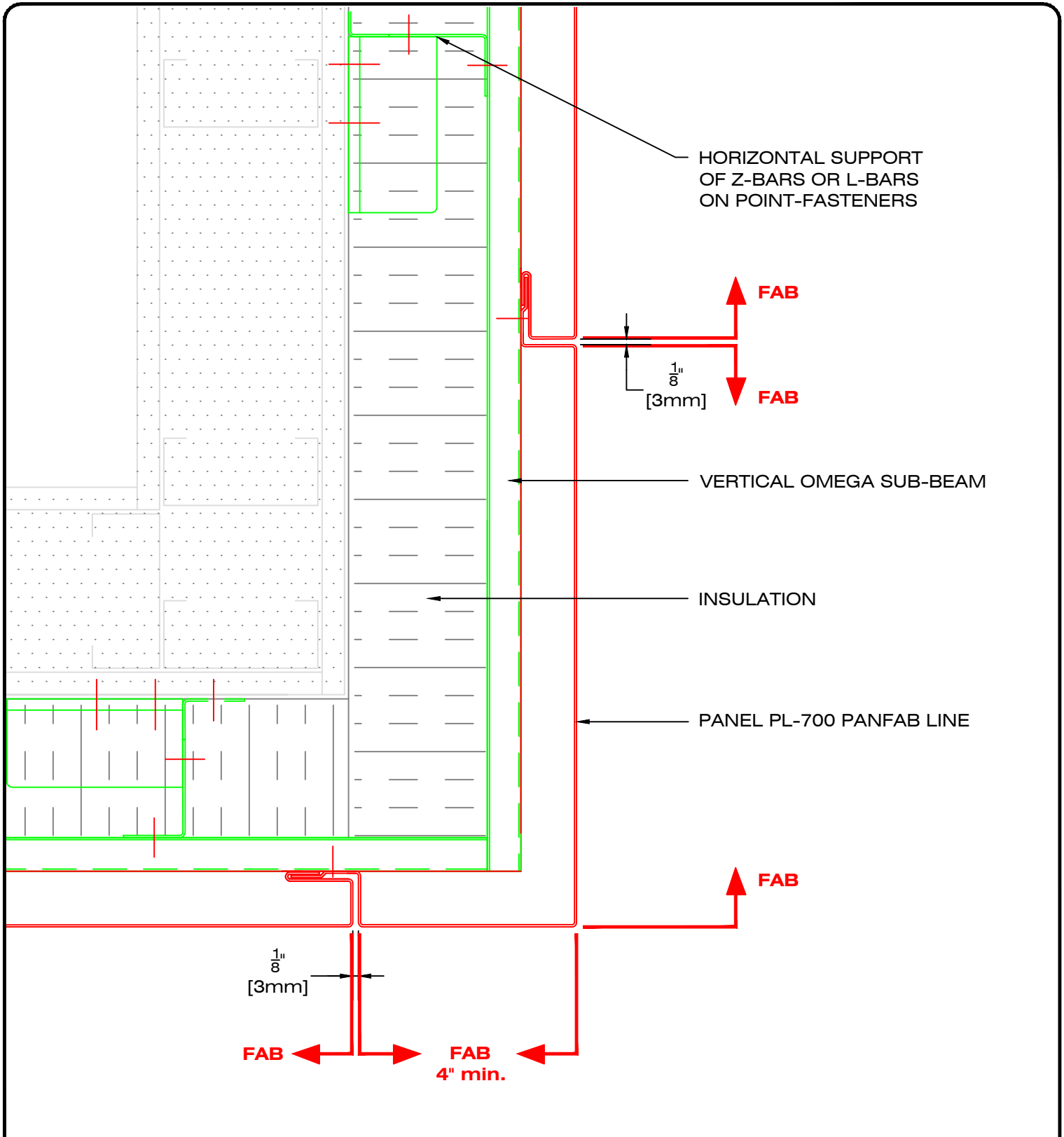


49, boul. de la Seigneurie Est  
Blainville (Québec) J7C 4G6

Phone : (450) 430-3029

[www.panfab.com](http://www.panfab.com)

Project:		PL-700 PANFAB LINE	
Title:		SECTIONAL DETAIL - FOUNDATION	
Scale:	1:2	Page:	700211
Date:	NOVEMBER 2025		



HORIZONTAL SUPPORT  
OF Z-BARS OR L-BARS  
ON POINT-FASTENERS

FAB

FAB

$\frac{1}{8}$ "  
[3mm]

VERTICAL OMEGA SUB-BEAM

INSULATION

PANEL PL-700 PANFAB LINE

FAB

$\frac{1}{8}$ "  
[3mm]

FAB

FAB  
4" min.



49, boul. de la Seigneurie Est  
Blainville (Québec) J7C 4G6

Phone : (450) 430-3029

[www.panfab.com](http://www.panfab.com)

Project:

PL-700 PANFAB LINE

Title:

SECTIONAL DETAIL - SOFFIT RETURN

Scale:

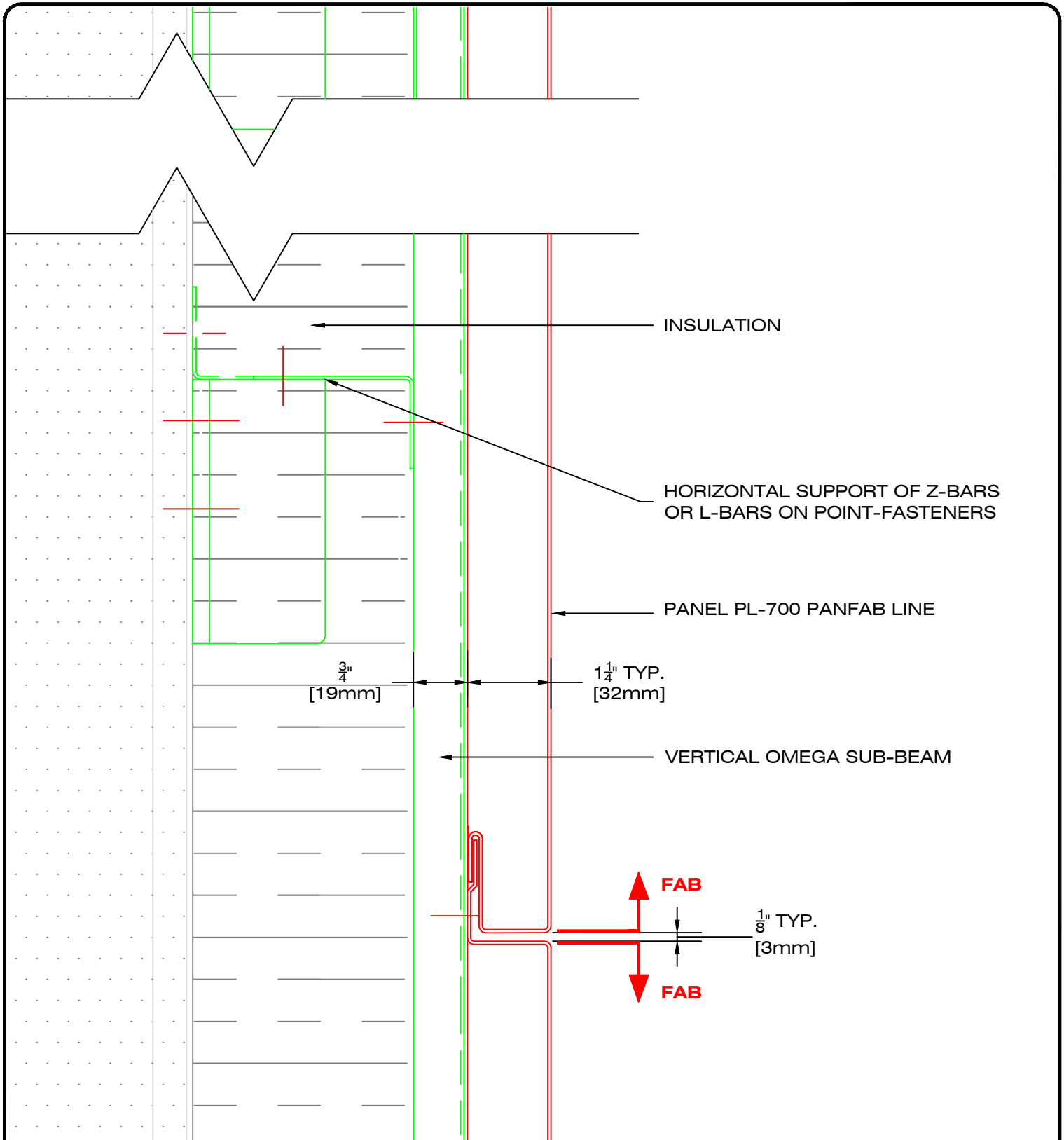
1:3

Page:

700212

Date:

NOVEMBER 2025

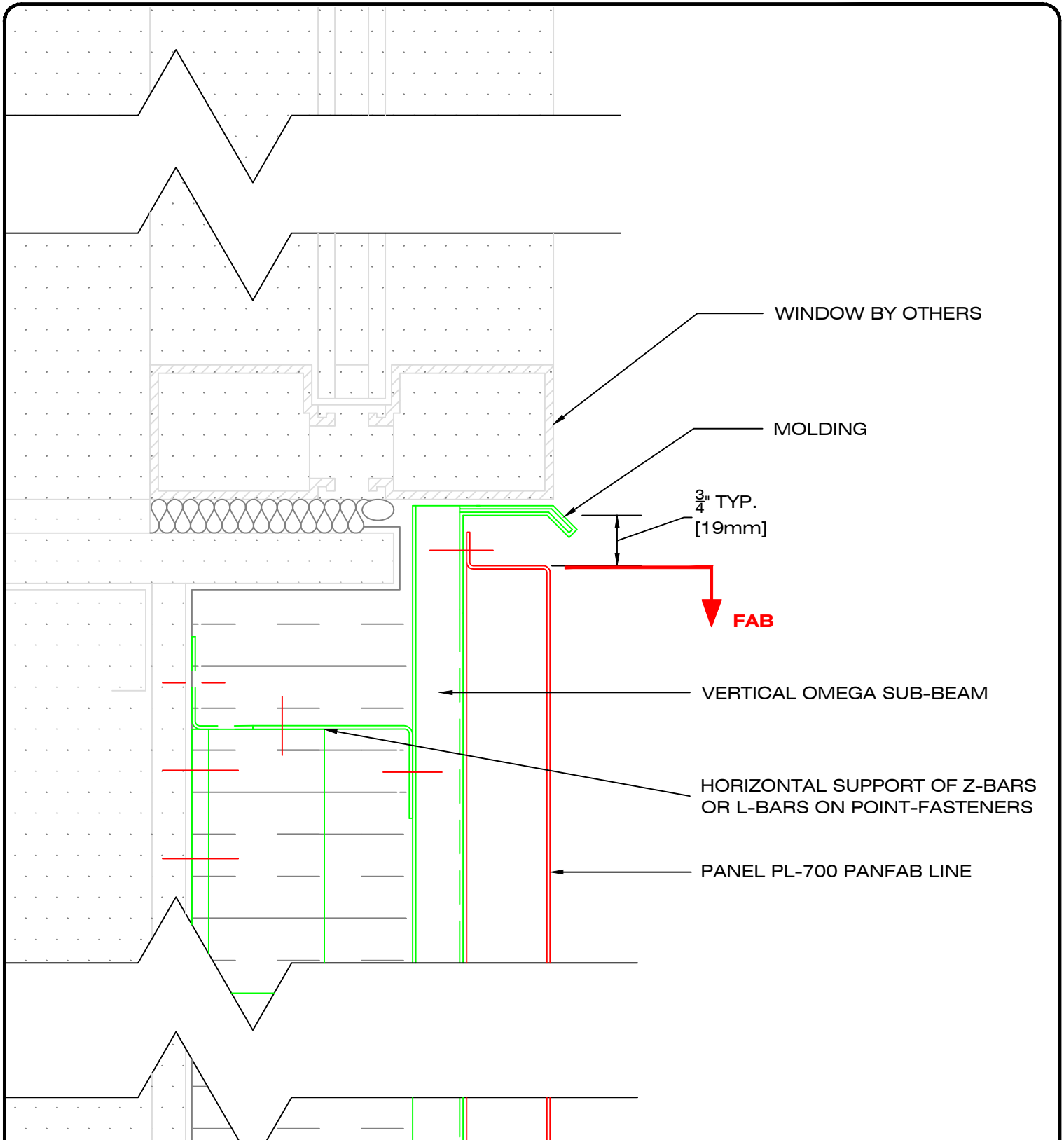


49, boul. de la Seigneurie Est  
Blainville (Québec) J7C 4G6

Phone : (450) 430-3029

[www.panfab.com](http://www.panfab.com)

Project:		PL-700 PANFAB LINE	
Title:		SECTIONAL DETAIL - HORIZONTAL JOINT	
Scale:	1:2	Page:	700220
Date:	NOVEMBER 2025		

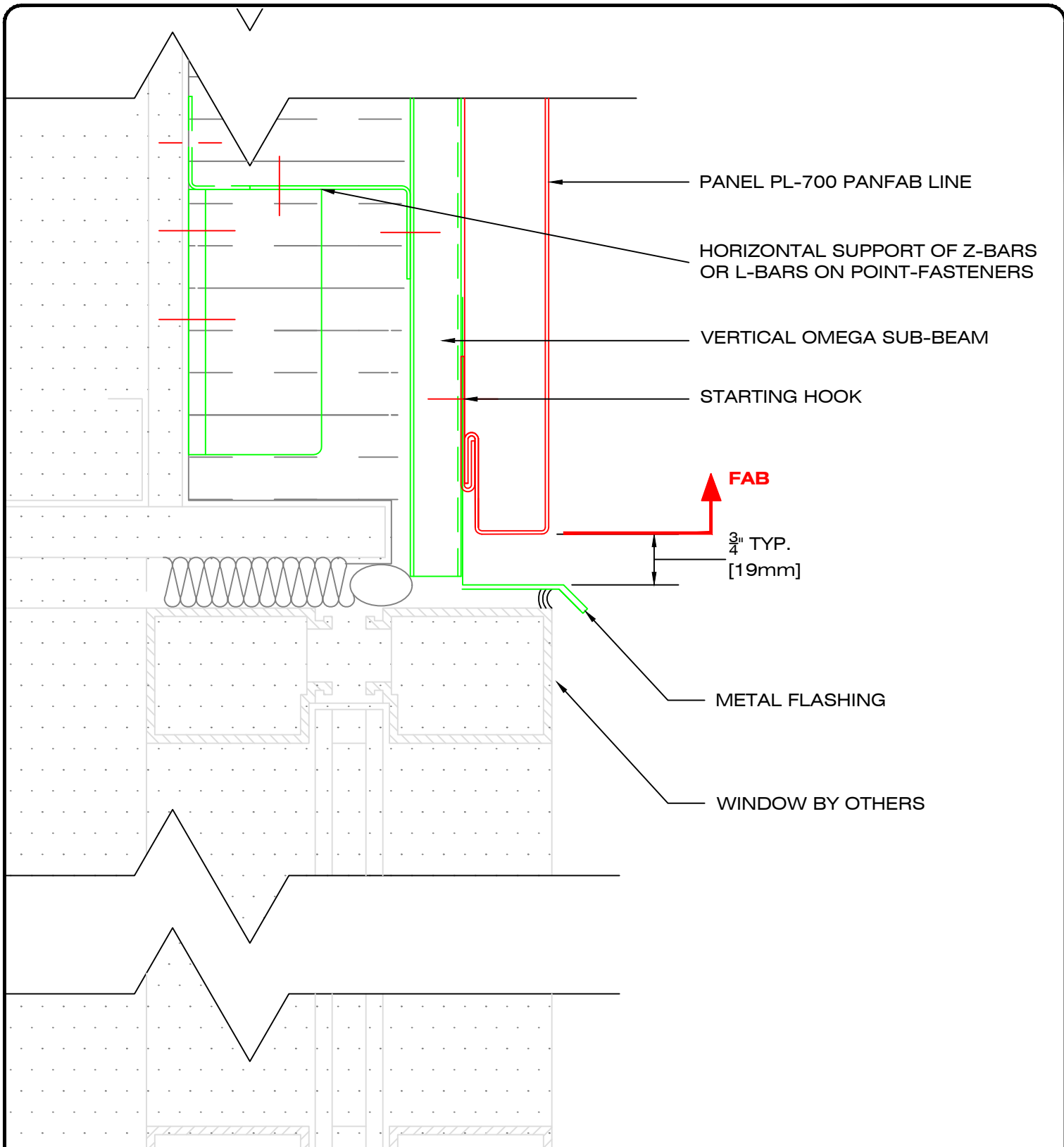


49, boul. de la Seigneurie Est  
Blainville (Québec) J7C 4G6

Phone : (450) 430-3029

[www.panfab.com](http://www.panfab.com)

Project:		PL-700 PANFAB LINE	
Title:		SECTIONAL DETAIL - WINDOW RELIEF	
Scale:	1:2	Page:	700230
Date:	NOVEMBER 2025		



49, boul. de la Seigneurie Est  
Blainville (Québec) J7C 4G6

Phone : (450) 430-3029

[www.panfab.com](http://www.panfab.com)

Project:

PL-700 PANFAB LINE

Title:

SECTIONAL DETAIL - WINDOW LINTEL

Scale:

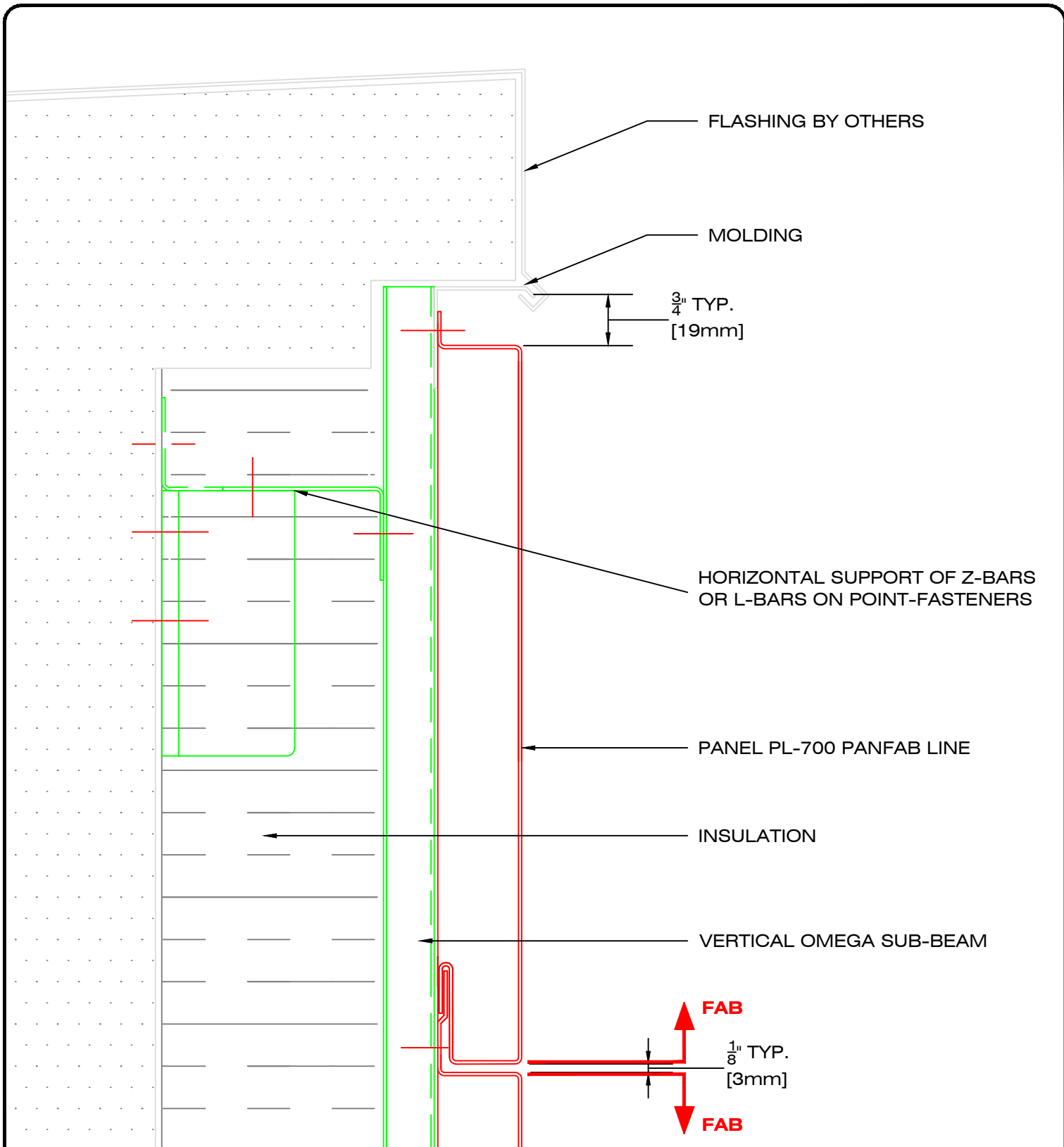
1:2

Date:

NOVEMBER 2025

Page:

700240

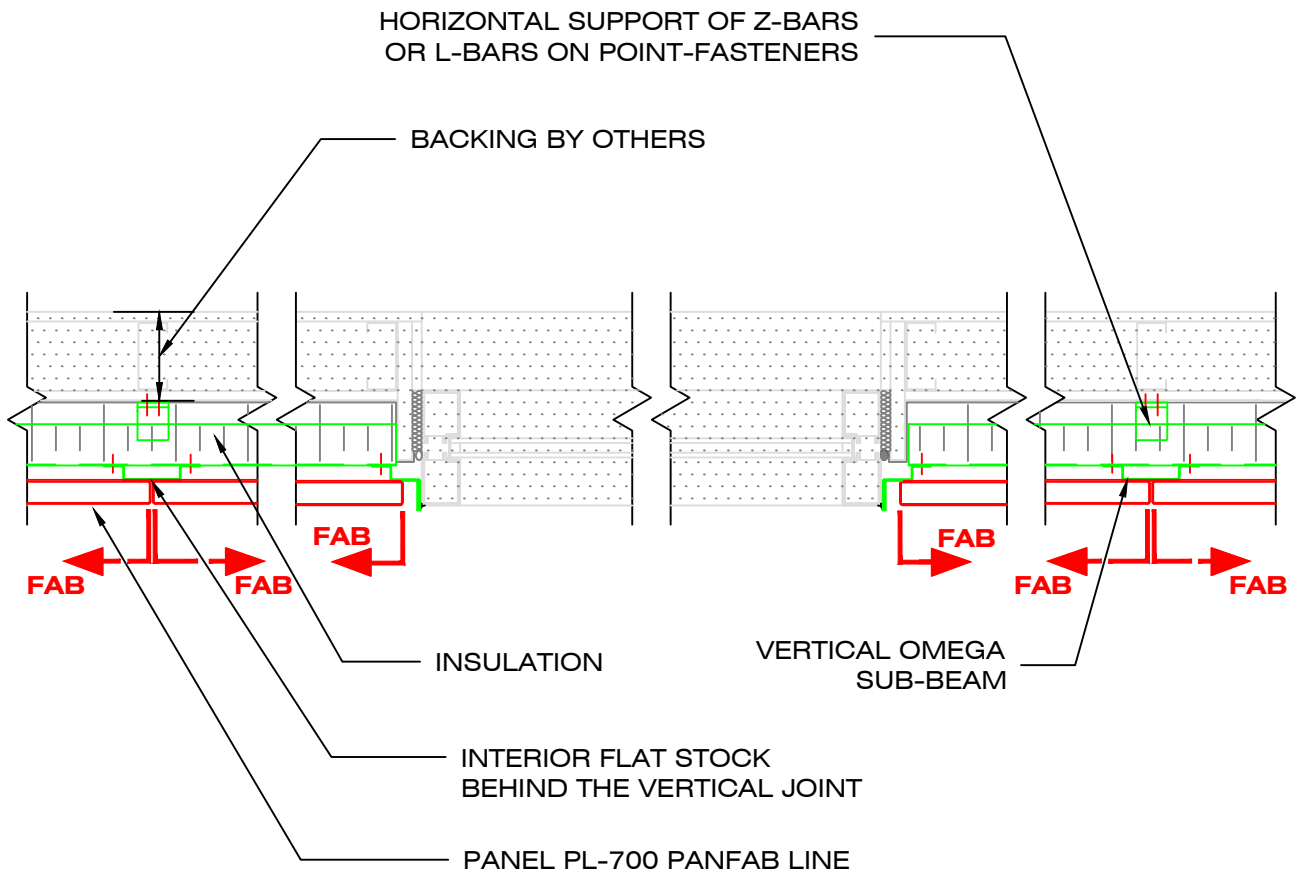


49, boul. de la Seigneurie Est  
Blainville (Québec) J7C 4G6

Phone : (450) 430-3029

[www.panfab.com](http://www.panfab.com)

Project:		PL-700 PANFAB LINE
Title:		SECTIONAL DETAIL - PARAPET
Scale:	1:2	Page: 700250
Date:	NOVEMBER 2025	

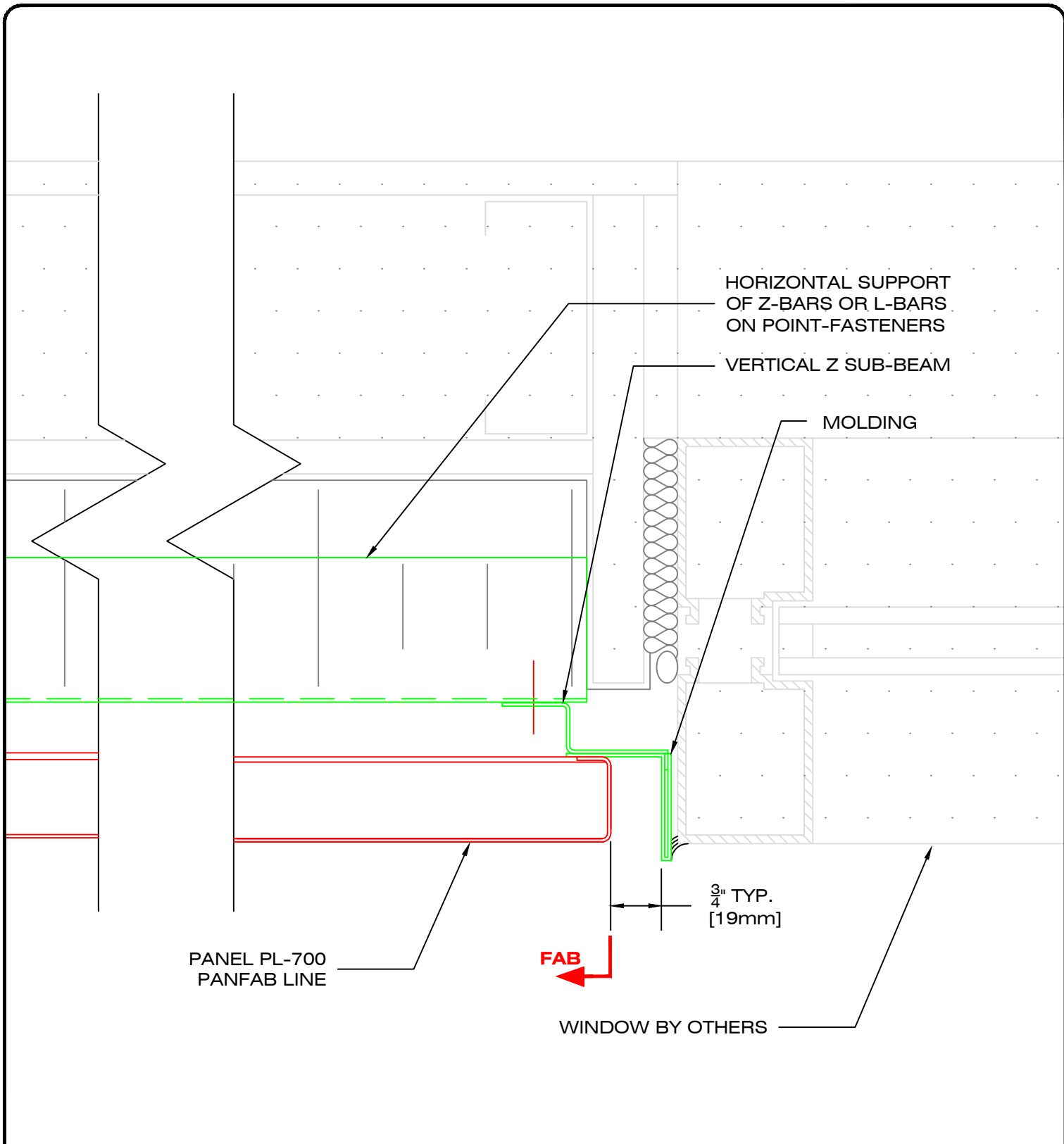


49, boul. de la Seigneurie Est  
Blainville (Québec) J7C 4G6

Phone : (450) 430-3029

[www.panfab.com](http://www.panfab.com)

Project:		PL-700 PANFAB LINE	
Title:		PLAN VIEW	
Scale:	1:10	Page:	700300
Date:	NOVEMBER 2025		



49, boul. de la Seigneurie Est  
Blainville (Québec) J7C 4G6

Phone : (450) 430-3029

[www.panfab.com](http://www.panfab.com)

Project:

PL-700 PANFAB LINE

Title:

PLAN DETAIL - JAMB AND WINDOW

Scale:

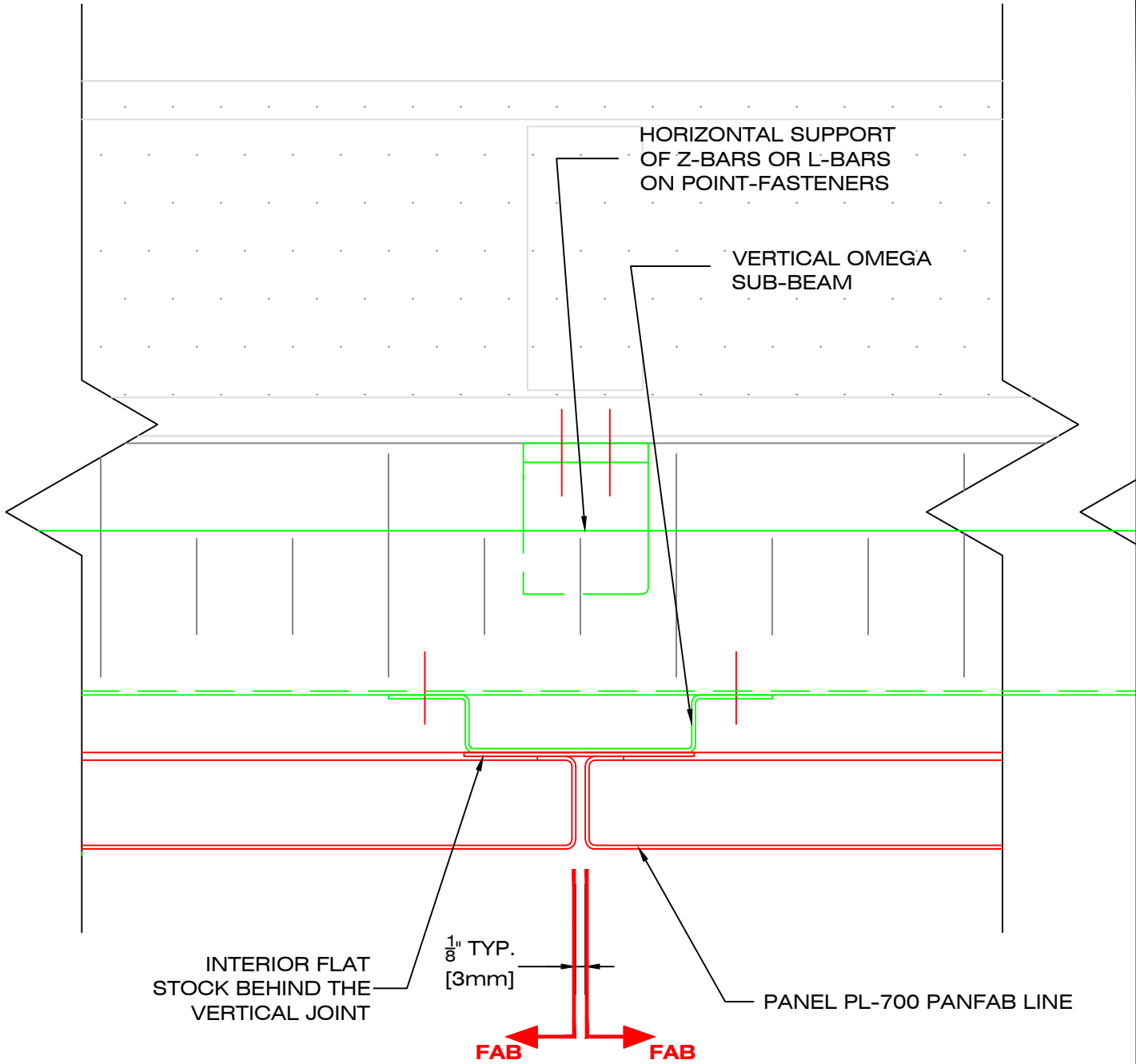
1:2

Page:

700310

Date:

NOVEMBER 2025



49, boul. de la Seigneurie Est  
Blainville (Québec) J7C 4G6

Phone : (450) 430-3029

[www.panfab.com](http://www.panfab.com)

Project:

PL-700 PANFAB LINE

Title:

PLAN DETAIL - VERTICAL JOINT

Scale:

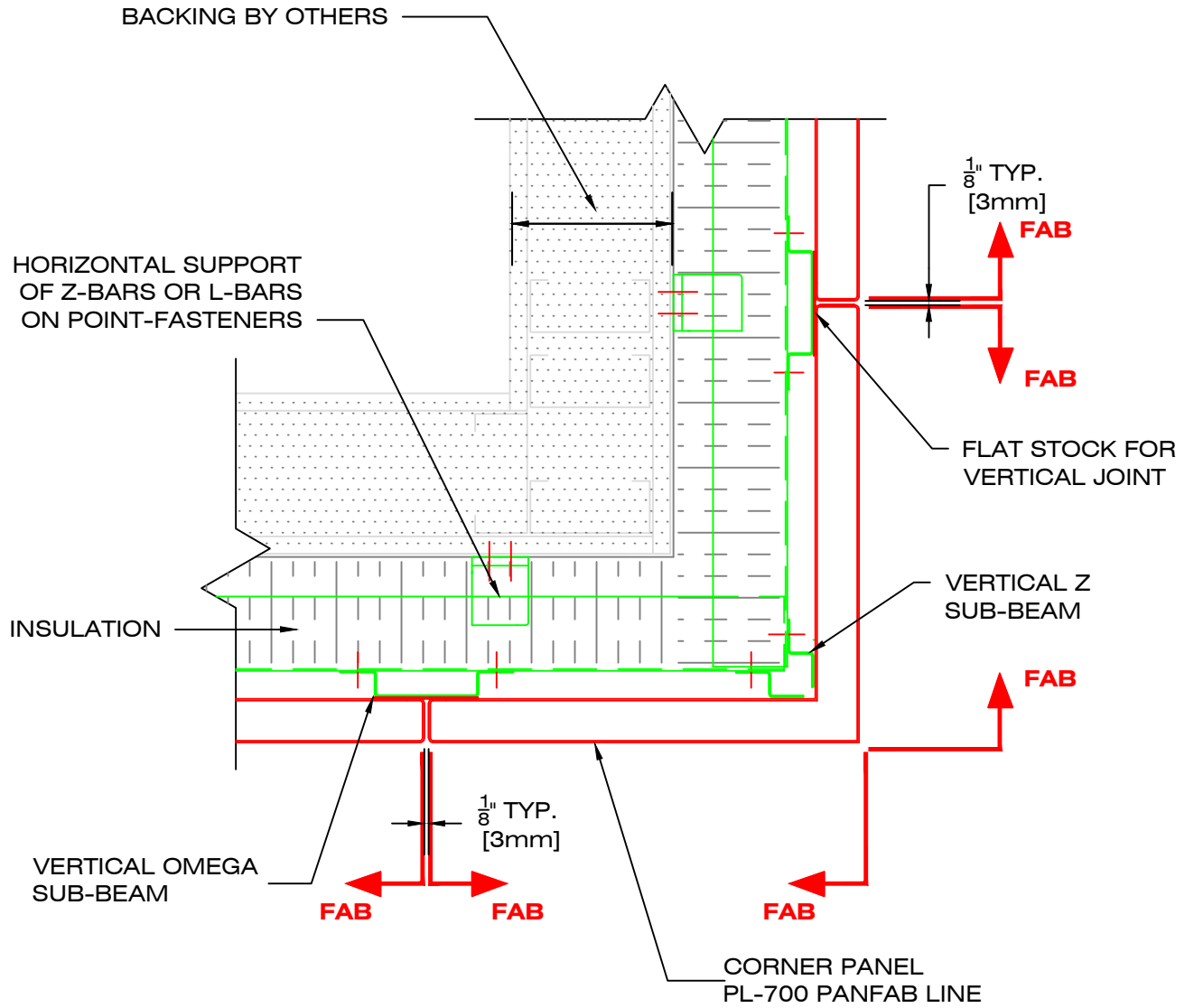
1:2

Date:

NOVEMBER 2025

Page:

700311



49, boul. de la Seigneurie Est  
Blainville (Québec) J7C 4G6

Phone : (450) 430-3029

[www.panfab.com](http://www.panfab.com)

Project:

PL-700 PANFAB LINE

Title:

PLAN DETAIL - EXTERIOR CORNER PANEL

Scale:

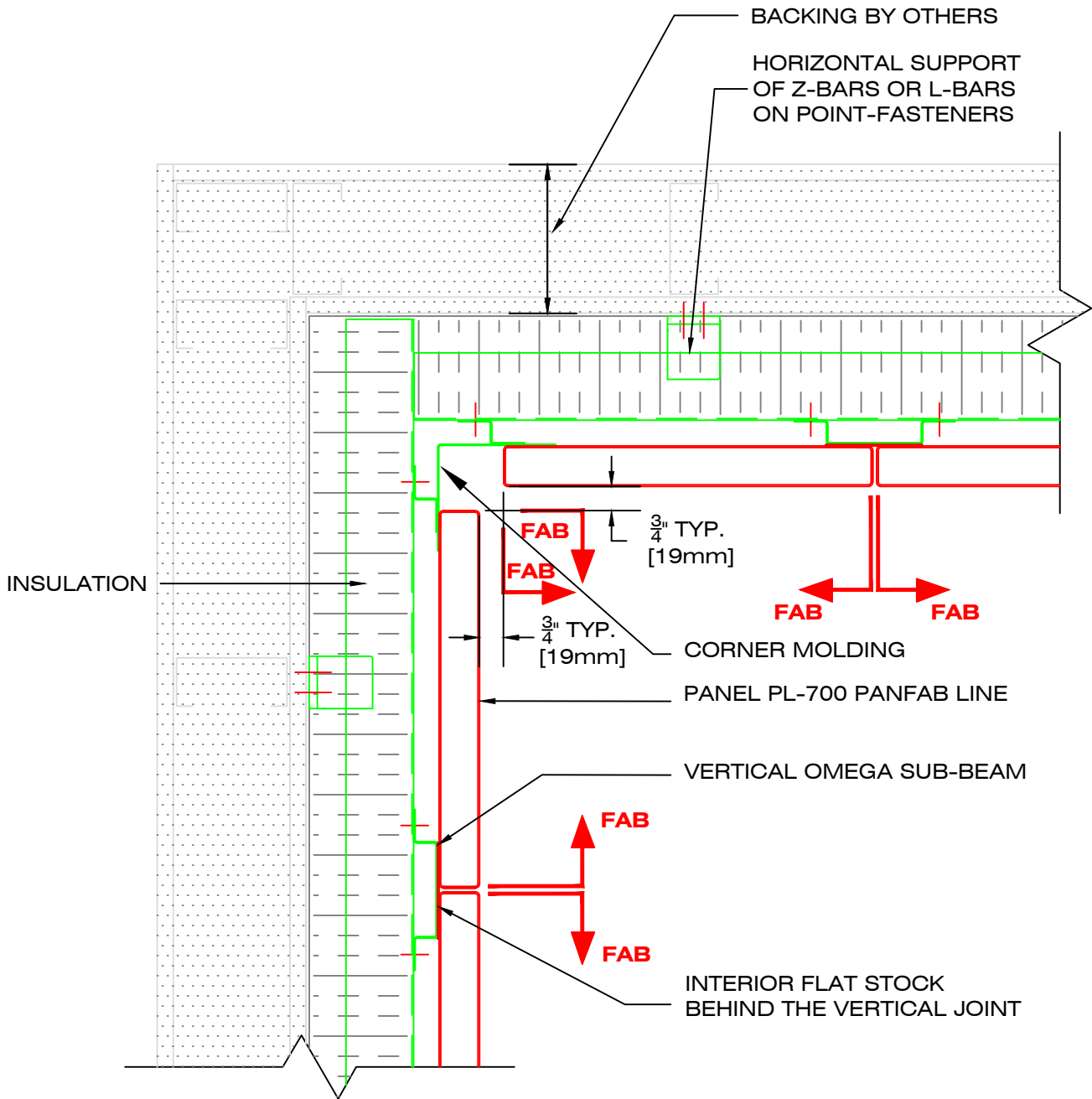
1:5

Page:

700320

Date:

NOVEMBER 2025



49, boul. de la Seigneurie Est  
Blainville (Québec) J7C 4G6

Phone : (450) 430-3029

[www.panfab.com](http://www.panfab.com)

Project:

PL-700 PANFAB LINE

Title:

PLAN DETAIL - INTERIOR CORNER PANEL

Scale:

1:5

Page:

700330

Date:

NOVEMBER 2025