

Usage: Staggered grid (half or third) "la canadienne" style set to immitate cladding in keeping with heritage conservation and historical value (horizontal or vertical installation).

Description: Custom-made panel, flat style with folded seams stapled flat. Hidden fasteners. Alum 0.8mm, maximum dimensions for D-MAX finish = 13"x56" c/c attached.

Support: Full-surface support is required; such as plywood or 1/2" ribbed sheathing 22 gauge galvanized steel or 20 gauge aluminum.

Finish options: -D-MAX pre-painted finish : Alum 0.8mm, alloy 5754H42, pre-painted finish type PVDF Kynar 500 70% such as Duranar XL, 7 colours in inventory : White RAL9016, Jupiter RAL9006, Neptune, Alpha Centauri, Charcoal, Rigel-2 and Black RAL9005.



49, boul. de la Seigneurie Est
Blainville (Québec) J7C 4G6

Phone : (450) 430-3029

www.panfab.com

Project: PB-800 PANFAB CLADDING

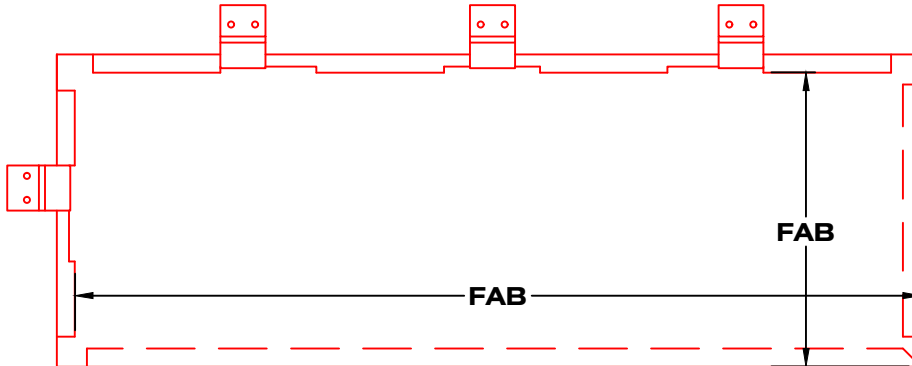
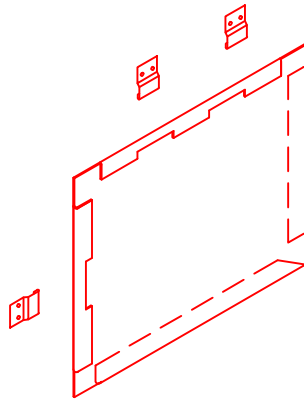
Title: ISOMETRIC VIEW

Scale: 1 : 60

Date: NOVEMBER 2025

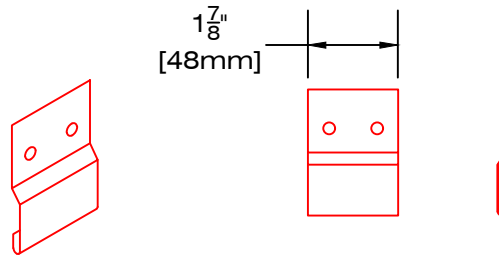
Page: 820200

PANEL



Scale : 1 : 8

CLIP FASTENER



Scale : 1 : 4

Usage: Staggered grid (half or third) "la canadienne" style set to immitate cladding in keeping with heritage conservation and historical value (horizontal or vertical installation).

Description: Custom-made panel, flat style with folded seams stapled flat. Hidden fasteners. Alum 0.8mm, maximum dimensions for D-MAX finish = 13"x56" c/c attached.

Support: Full-surface support is required; such as plywood or 1/2" ribbed sheathing 22 gauge galvanized steel or 20 gauge aluminum.

Finish options: -D-MAX pre-painted finish : Alum 0.8mm, alloy 5754H42, pre-painted finish type PVDF Kynar 500 70% such as Duranar XL, 7 colours in inventory : White RAL9016, Jupiter RAL9006, Neptune, Alpha Centauri, Charcoal, Rigel-2 and Black RAL9005.



49, boul. de la Seigneurie Est
Blainville (Québec) J7C 4G6

Phone : (450) 430-3029

www.panfab.com

Project: PB-800 PANFAB CLADDING

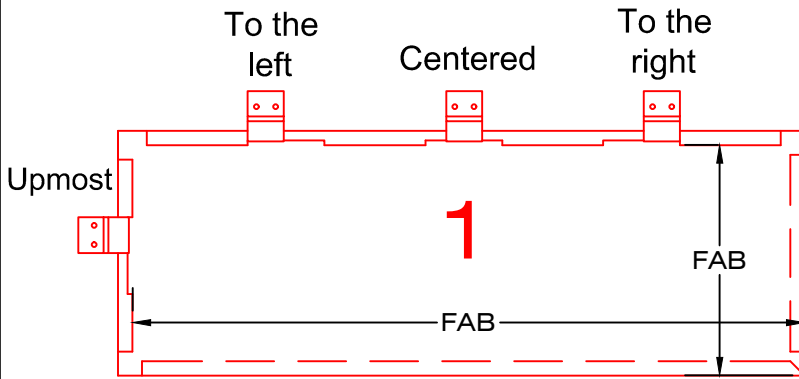
Title: SKETCH MANUFACTURING

Scale: AS SHOWN

Date: NOVEMBER 2025

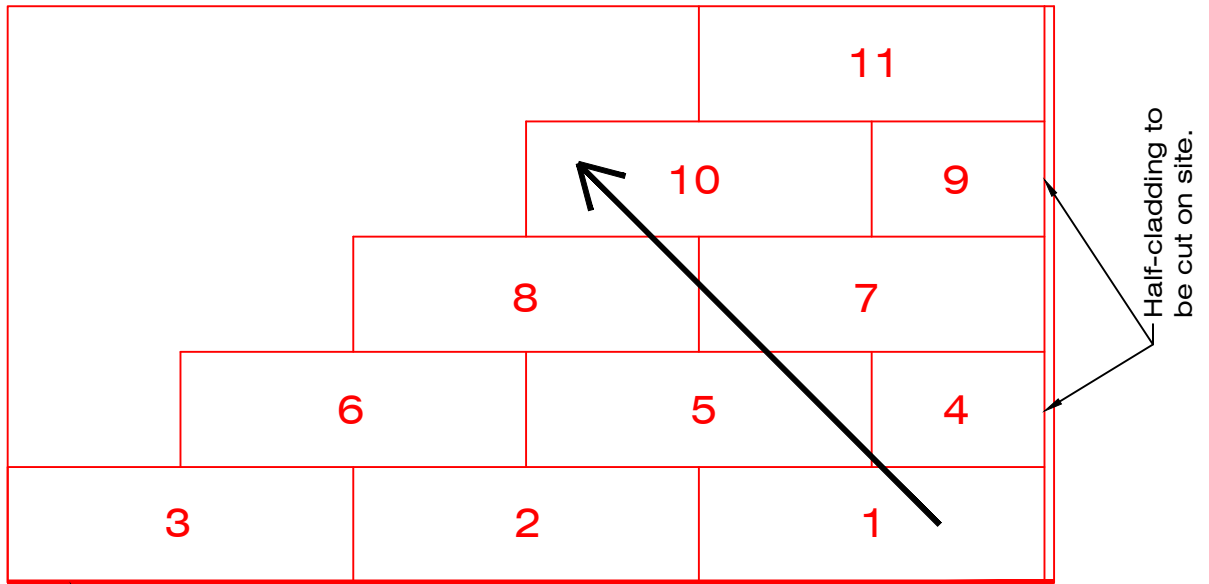
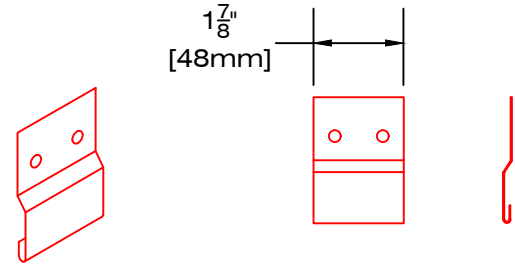
Page: 820201

Scale : 1 : 10



CLIP FASTENER

Scale : 1 : 4



Cladding installation in step-like from right to left.

Starting hook

Scale : 1 : 20

Usage: Staggered grid (half or third) "la canadienne" style set to immitate cladding in keeping with heritage conservation and historical value (horizontal or vertical installation).

Description: Custom-made panel, flat style with folded seams stapled flat. Hidden fasteners. Alum 0.8mm, maximum dimensions for D-MAX finish = 13"x56" c/c attached.

Support: Full-surface support is required; such as plywood or 1/2" ribbed sheathing 22 gauge galvanized steel or 20 gauge aluminum.

Finish options: -D-MAX pre-painted finish : Alum 0.8mm, alloy 5754H42, pre-painted finish type PVDF Kynar 500 70% such as Duranar XL, 7 colours in inventory : White RAL9016, Jupiter RAL9006, Neptune, Alpha Centauri, Charcoal, Rigel-2 and Black RAL9005.

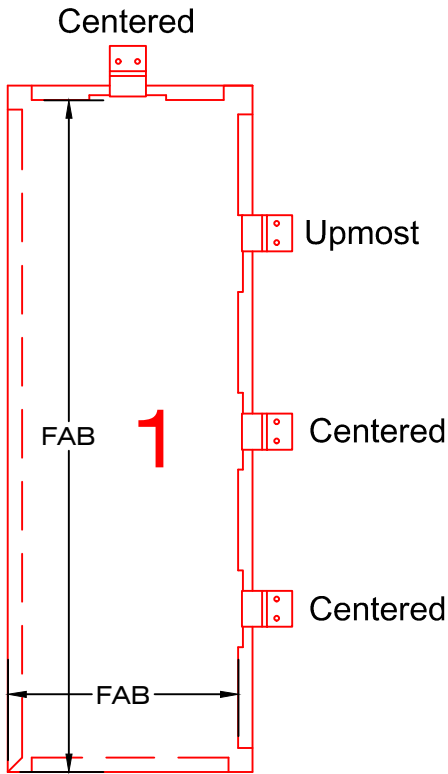


49, boul. de la Seigneurie Est
Blainville (Québec) J7C 4G6

Phone : (450) 430-3029

www.panfab.com

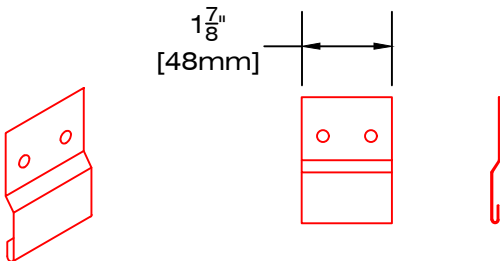
Project:		PB-800 PANFAB CLADDING	
Title:		HORIZONTAL INSTALLATION	
Scale:	AS SHOWN	Page:	820202
Date:	NOVEMBER 2025		



Scale : 1 : 10

CLIP FASTENER

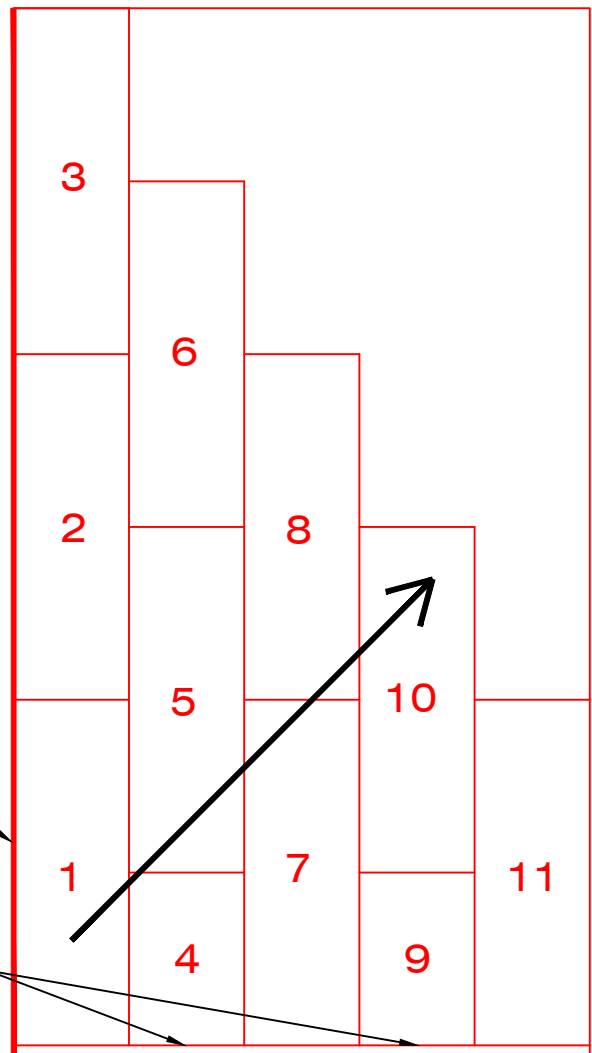
Scale : 1 : 4



Starting hook "Starter"

Half-cladding to be cut on site.

Scale: 1 : 20



Cladding installation in step-like from left to right.

Usage: Staggered grid (half or third) "la canadienne" style set to immitate cladding in keeping with heritage conservation and historical value (horizontal or vertical installation).

Description: Custom-made panel, flat style with folded seams stapled flat. Hidden fasteners. Alum 0.8mm, maximum dimensions for D-MAX finish = 13"x56" c/c attached.

Support: Full-surface support is required; such as plywood or 1/2" ribbed sheathing 22 gauge galvanized steel or 20 gauge aluminum.

Finish options: -D-MAX pre-painted finish : Alum 0.8mm, alloy 5754H42, pre-painted finish type PVDF Kynar 500 70% such as Duranar XL, 7 colours in inventory : White RAL9016, Jupiter RAL9006, Neptune, Alpha Centauri, Charcoal, Rigel-2 and Black RAL9005.



49, boul. de la Seigneurie Est
Blainville (Québec) J7C 4G6

Phone : (450) 430-3029

www.panfab.com

Project:

PB-800 PANFAB CLADDING

Title:

VERTICAL INSTALLATION

Scale:

AS SHOWN

Page:

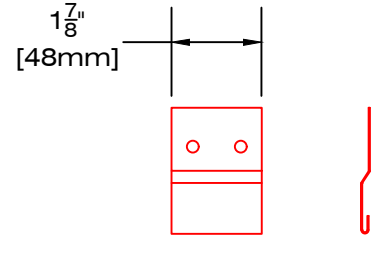
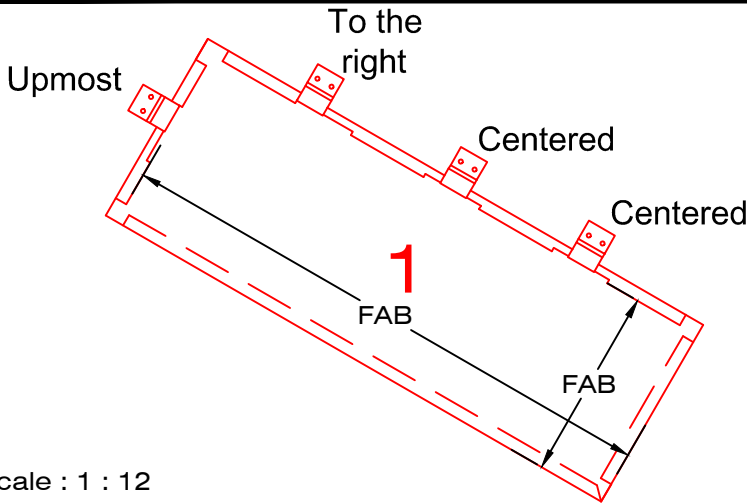
820203

Date:

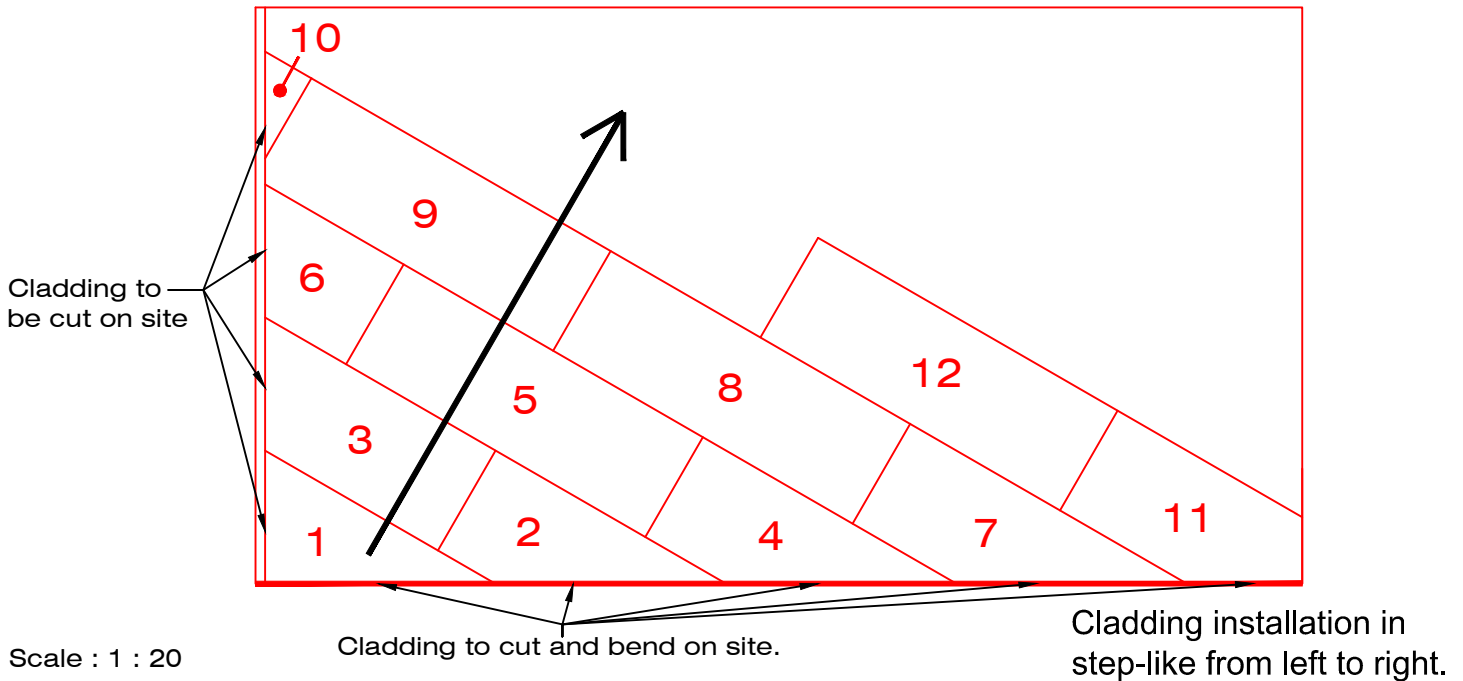
NOVEMBER 2025

CLIP FASTENER

Scale : 1 : 4



Scale : 1 : 12



Scale : 1 : 20

Usage: Staggered grid (half or third) "la canadienne" style set to immitate cladding in keeping with heritage conservation and historical value (horizontal or vertical installation).

Description: Custom-made panel, flat style with folded seams stapled flat. Hidden fasteners. Alum 0.8mm, maximum dimensions for D-MAX finish = 13"x56" c/c attached.

Support: Full-surface support is required; such as plywood or 1/2" ribbed sheathing 22 gauge galvanized steel or 20 gauge aluminum.

Finish options: -D-MAX pre-painted finish : Alum 0.8mm, alloy 5754H42, pre-painted finish type PVDF Kynar 500 70% such as Duranar XL, 7 colours in inventory : White RAL9016, Jupiter RAL9006, Neptune, Alpha Centauri, Charcoal, Rigel-2 and Black RAL9005.



49, boul. de la Seigneurie Est
Blainville (Québec) J7C 4G6

Phone : (450) 430-3029

www.panfab.com

Project:

PB-800 PANFAB CLADDING

Title:

CORNER INSTALLATION

Scale:

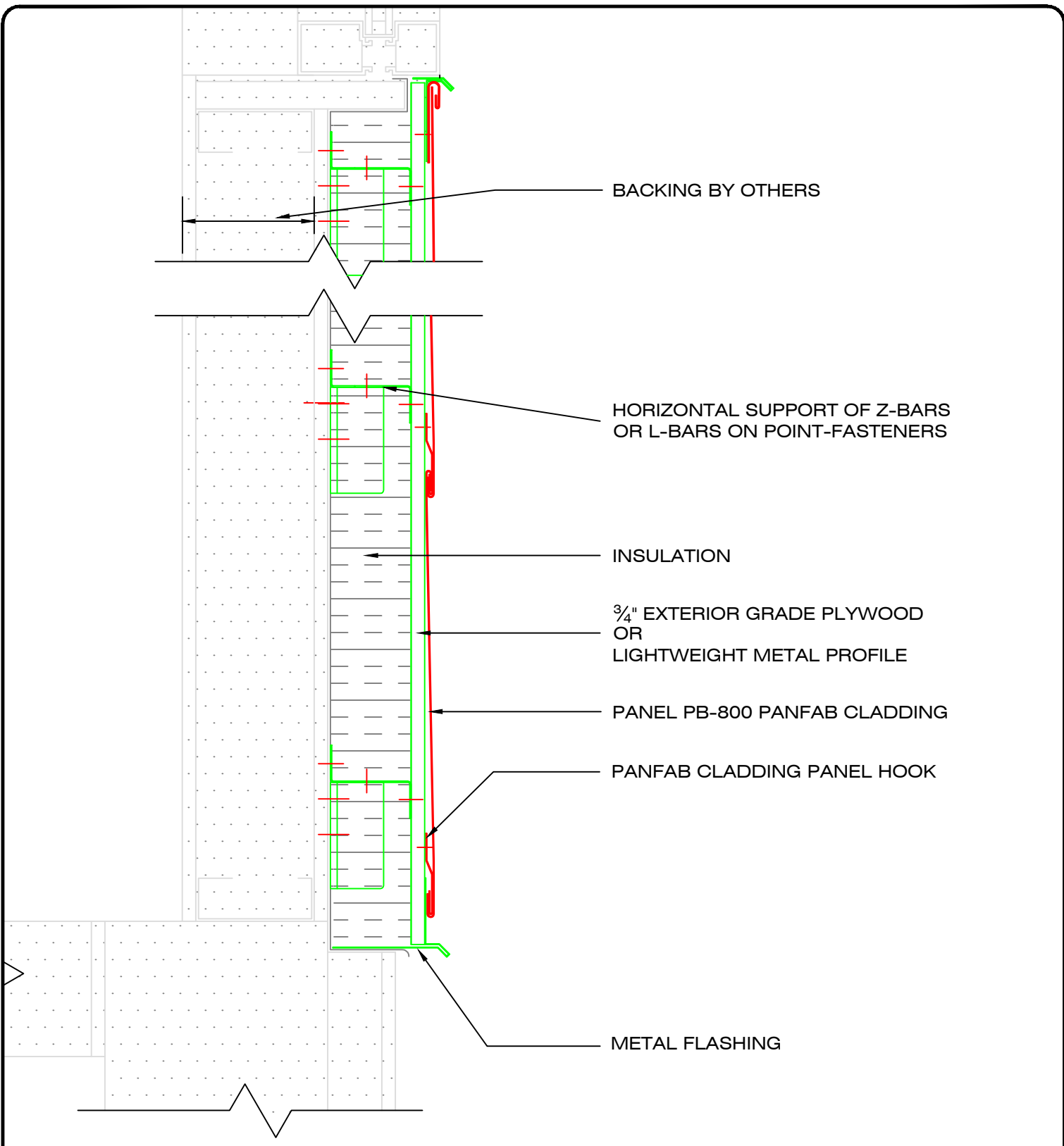
AS SHOWN

Page:

820204

Date:

NOVEMBER 2025

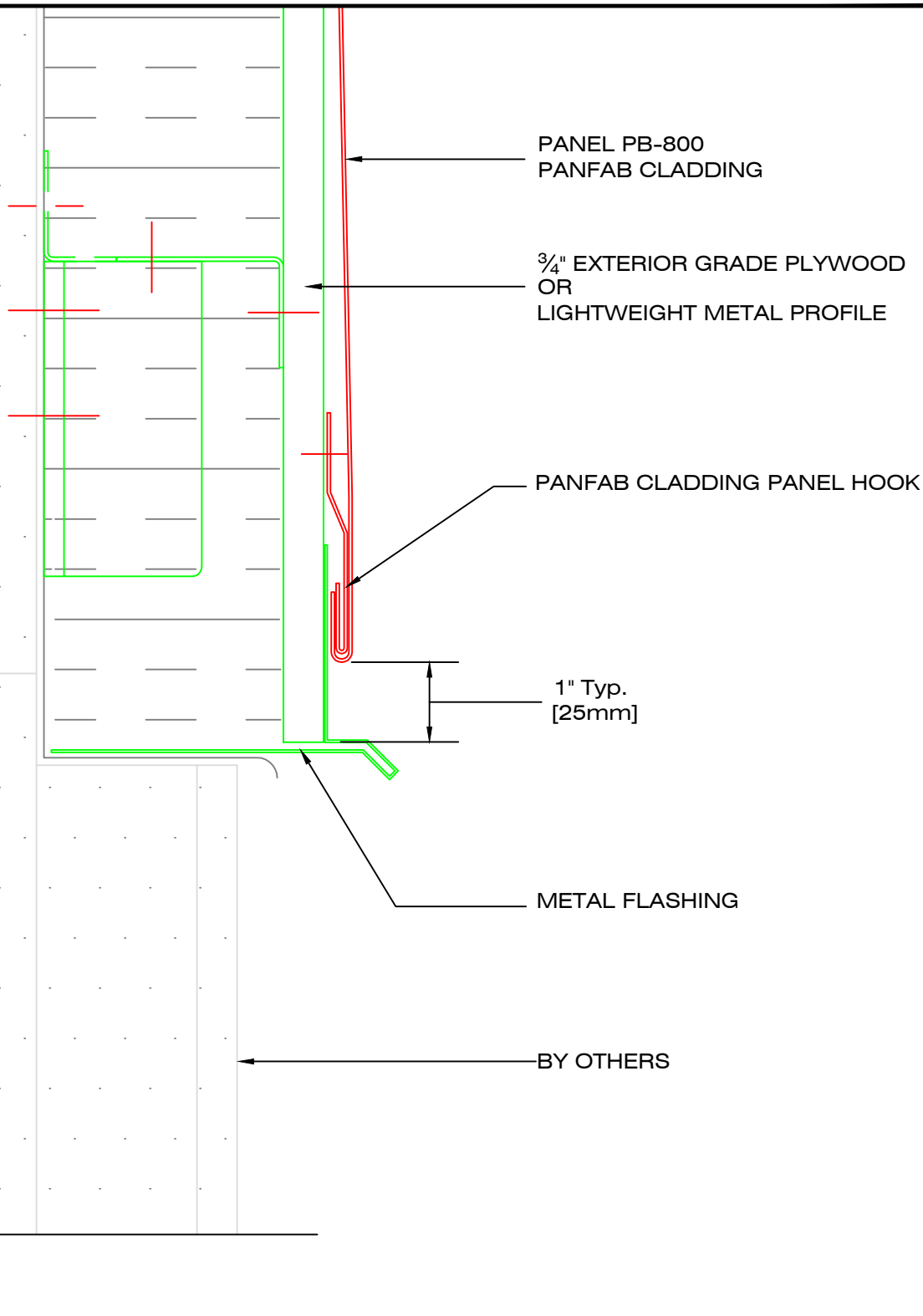


49, boul. de la Seigneurie Est
Blainville (Québec) J7C 4G6

Phone : (450) 430-3029

www.panfab.com

Project:		PB-800 PANFAB CLADDING	
Title:		SECTIONAL DETAIL - GENERAL	
Scale:	1:5	Page:	820210
Date:	NOVEMBER 2025		



PANEL PB-800
PANFAB CLADDING

$\frac{3}{4}$ " EXTERIOR GRADE PLYWOOD
OR
LIGHTWEIGHT METAL PROFILE

PANFAB CLADDING PANEL HOOK

1" Typ.
[25mm]

METAL FLASHING

BY OTHERS



49, boul. de la Seigneurie Est
Blainville (Québec) J7C 4G6

Phone : (450) 430-3029

www.panfab.com

Project:

PB-800 PANFAB CLADDING

Title:

SECTIONAL DETAIL - FOUNDATION

Scale:

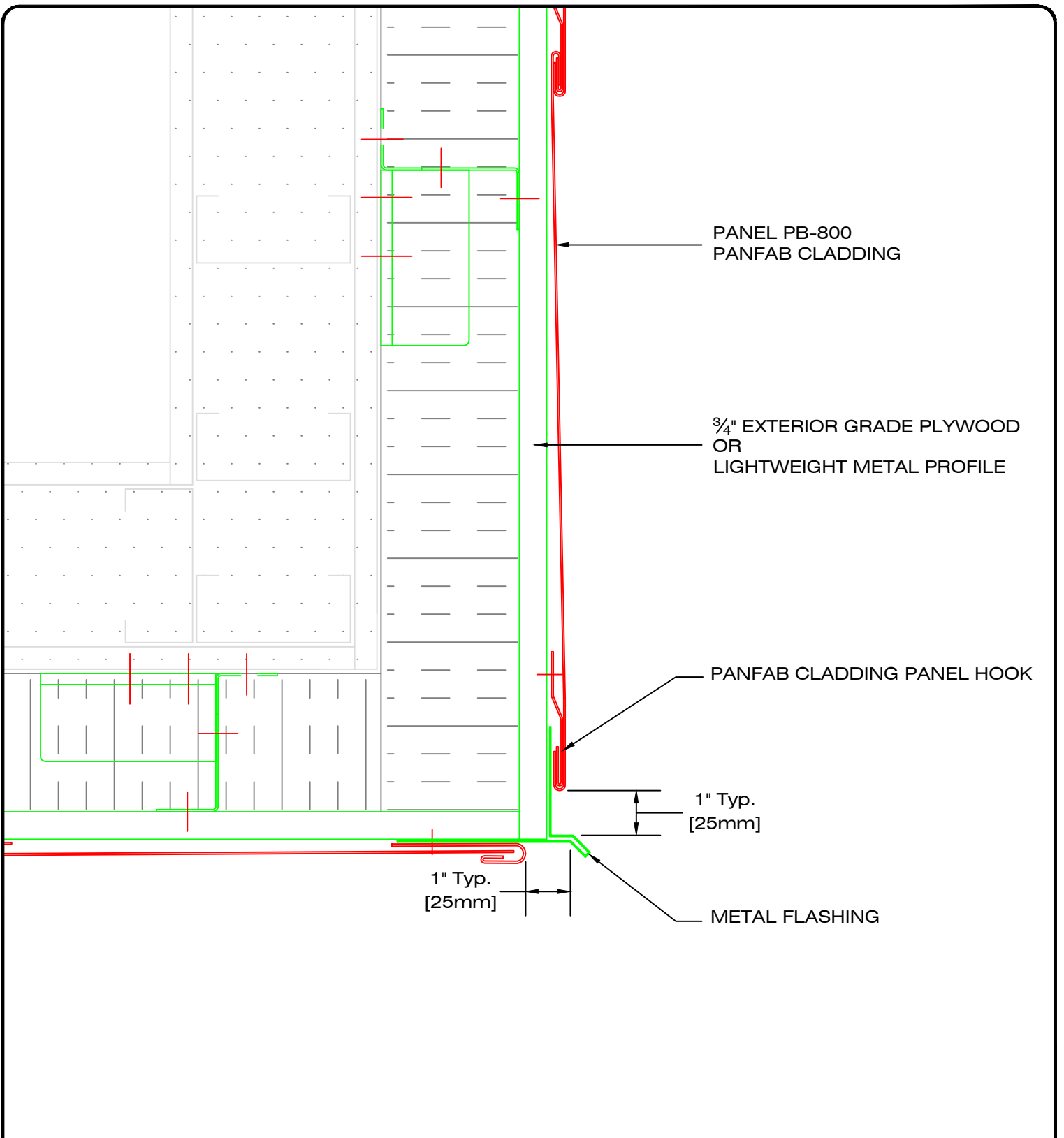
1:2

Page:

820211

Date:

AUGUST 2025

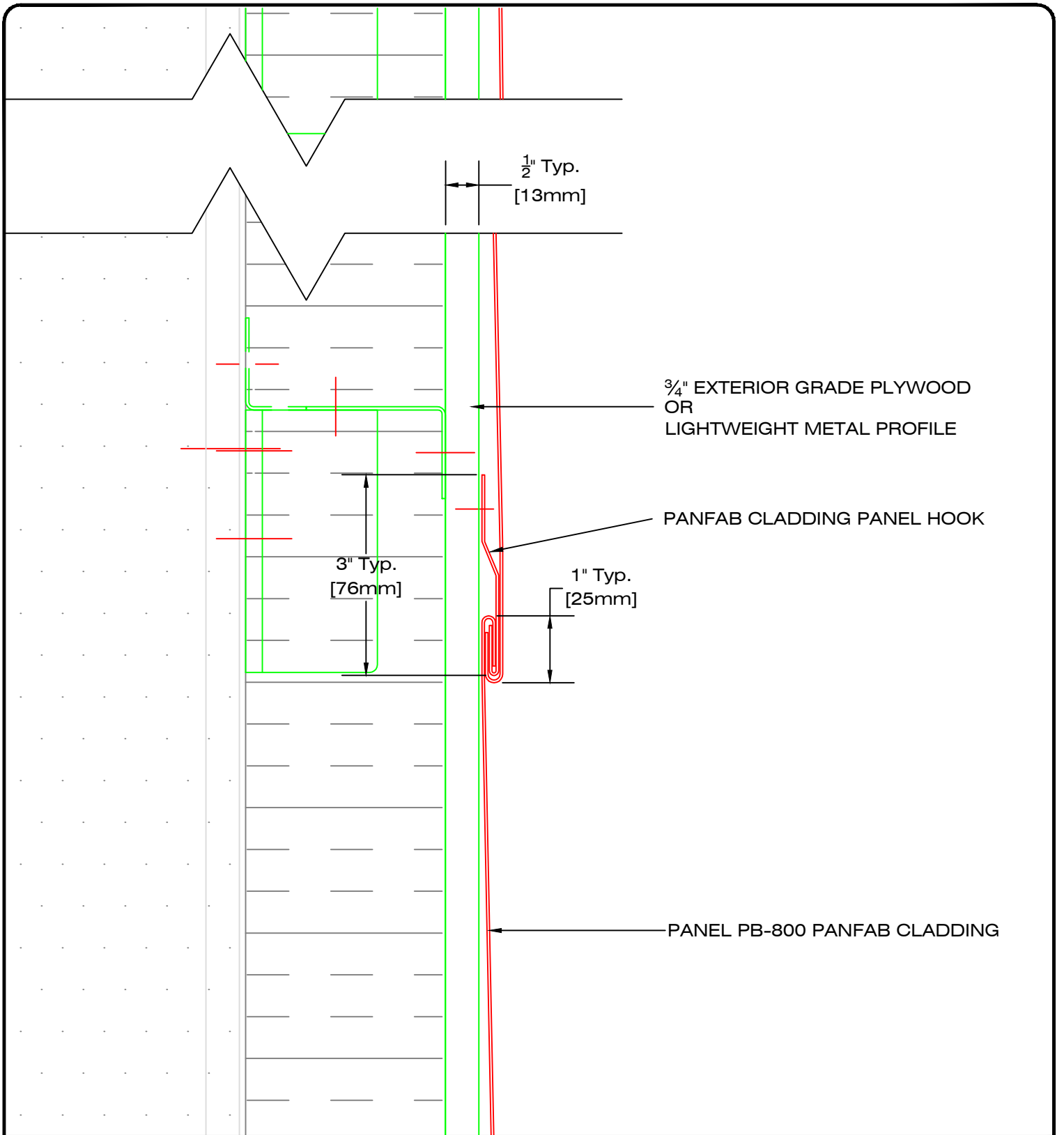


49, boul. de la Seigneurie Est
Blainville (Québec) J7C 4G6

Phone : (450) 430-3029

www.panfab.com

Project:		PB-800 PANFAB CLADDING	
Title:		SECTIONAL DETAIL - SOFFIT RETURN	
Scale:	1:3	Page:	820212
Date:	NOVEMBER 2025		

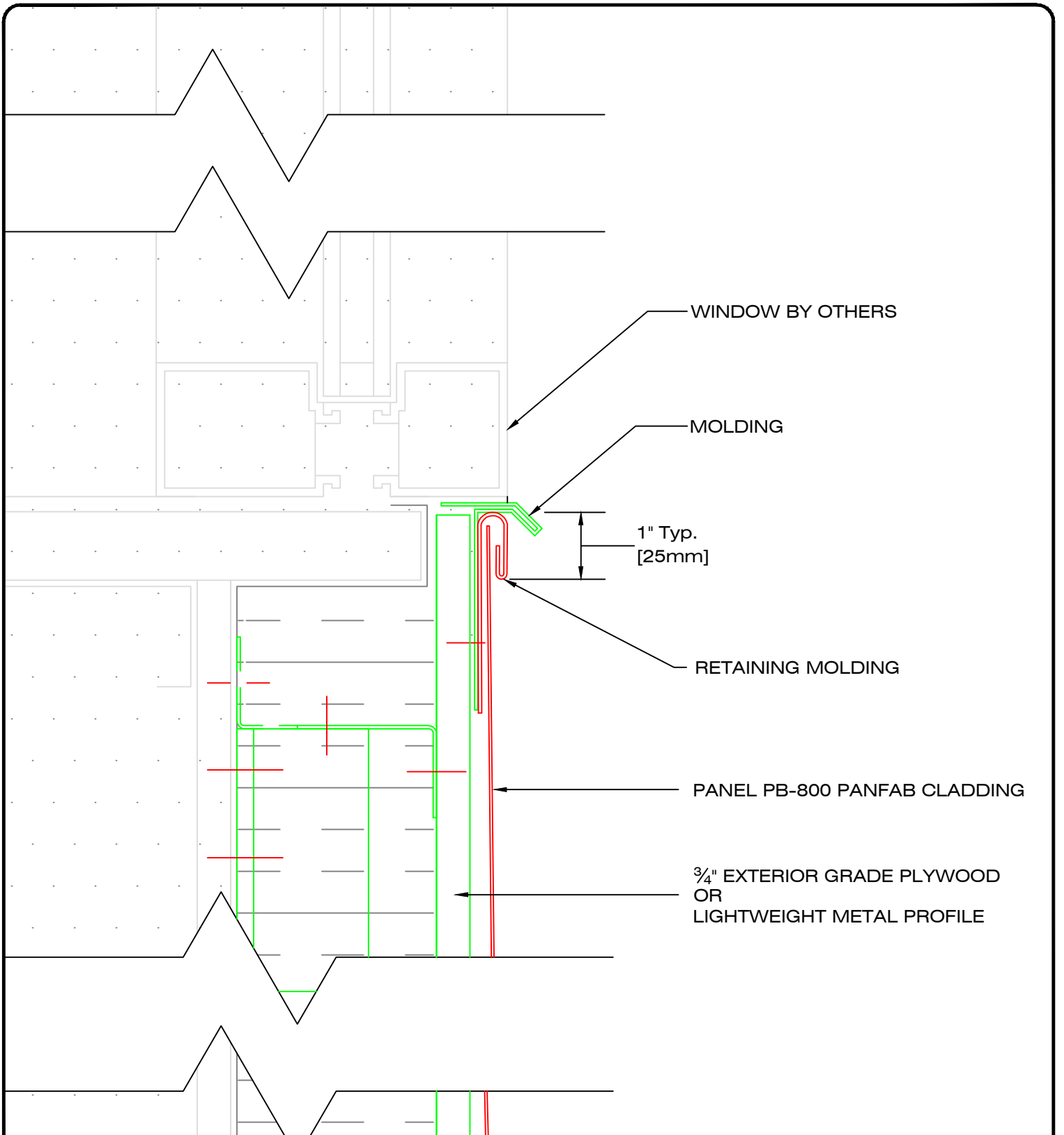


49, boul. de la Seigneurie Est
Blainville (Québec) J7C 4G6

Phone : (450) 430-3029

www.panfab.com

Project:		PB-800 PANFAB CLADDING	
Title:		SECTIONAL DETAIL - HORIZONTAL JOINT	
Scale:	1:2	Page:	820220
Date:	NOVEMBER 2025		

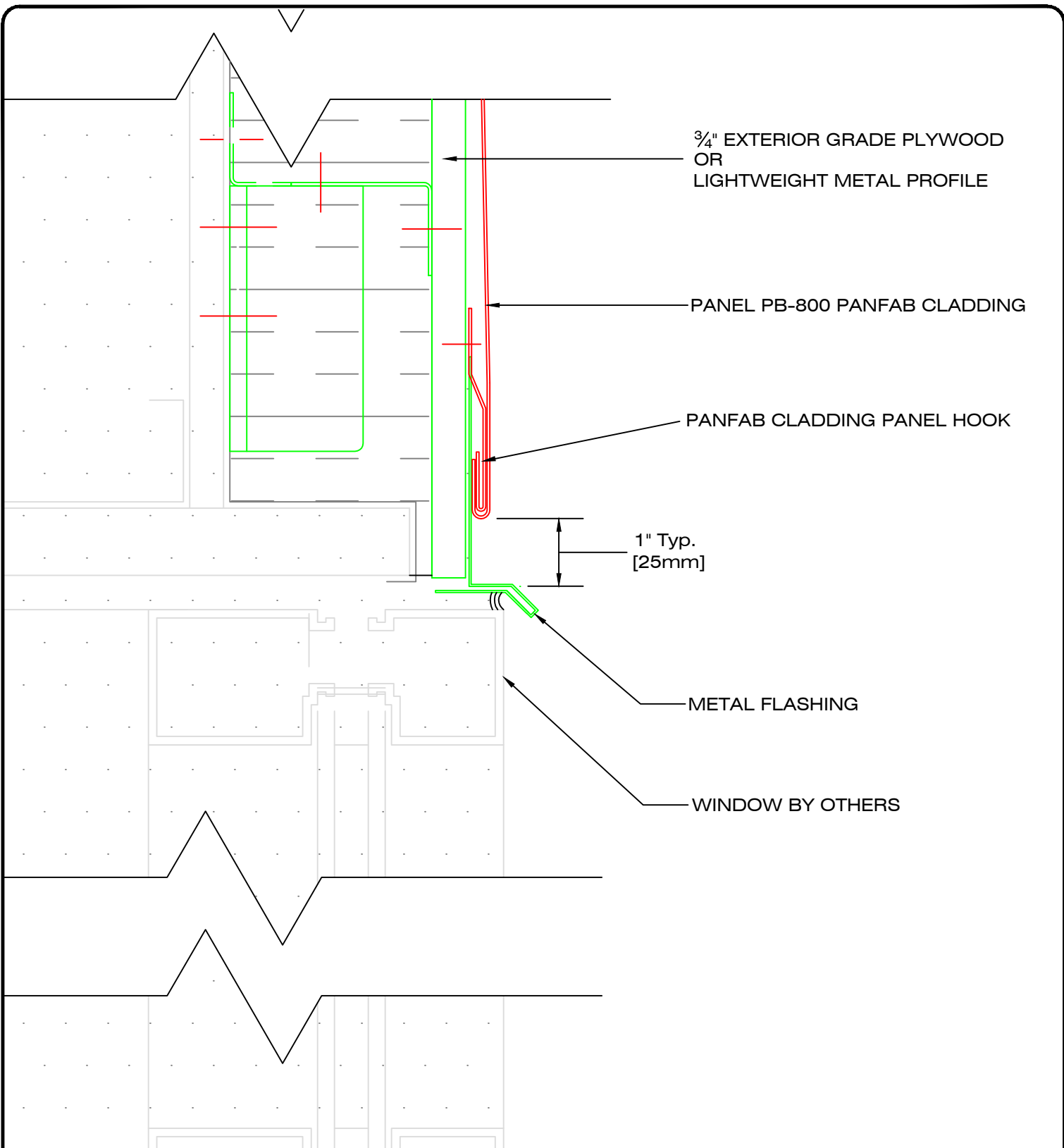


49, boul. de la Seigneurie Est
Blainville (Québec) J7C 4G6

Phone : (450) 430-3029

www.panfab.com

Project:		PB-800 PANFAB CLADDING	
Title:		SECTIONAL DETAIL - WINDOW RELIEF	
Scale:	1:2	Page:	820230
Date:	NOVEMBER 2025		

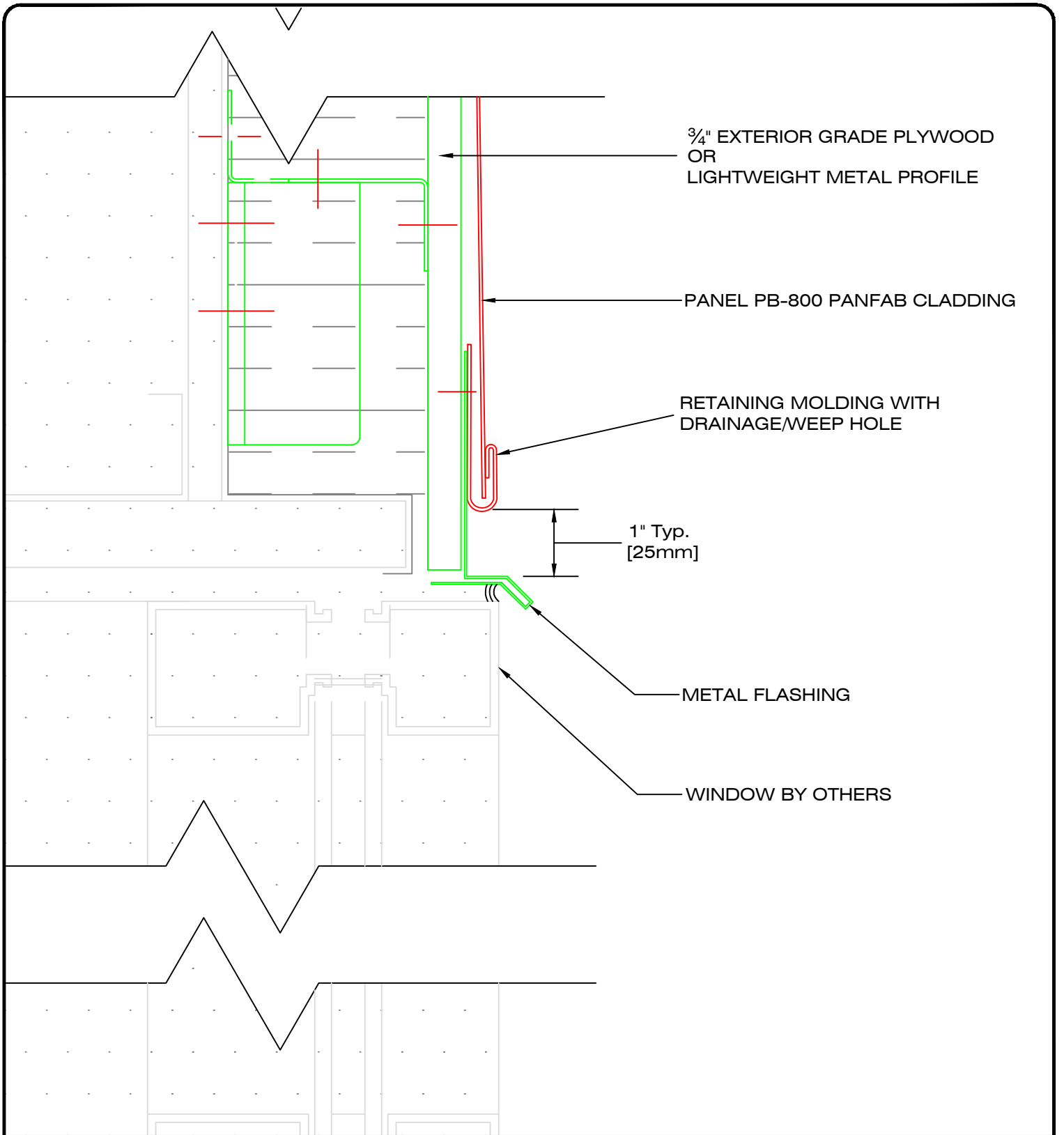


49, boul. de la Seigneurie Est
Blainville (Québec) J7C 4G6

Phone : (450) 430-3029

www.panfab.com

Project:		PB-800 PANFAB CLADDING	
Title:		SECTIONAL DETAIL - WINDOW LINTEL	
Scale:	1:2	Page:	820240
Date:	NOVEMBER 2025		

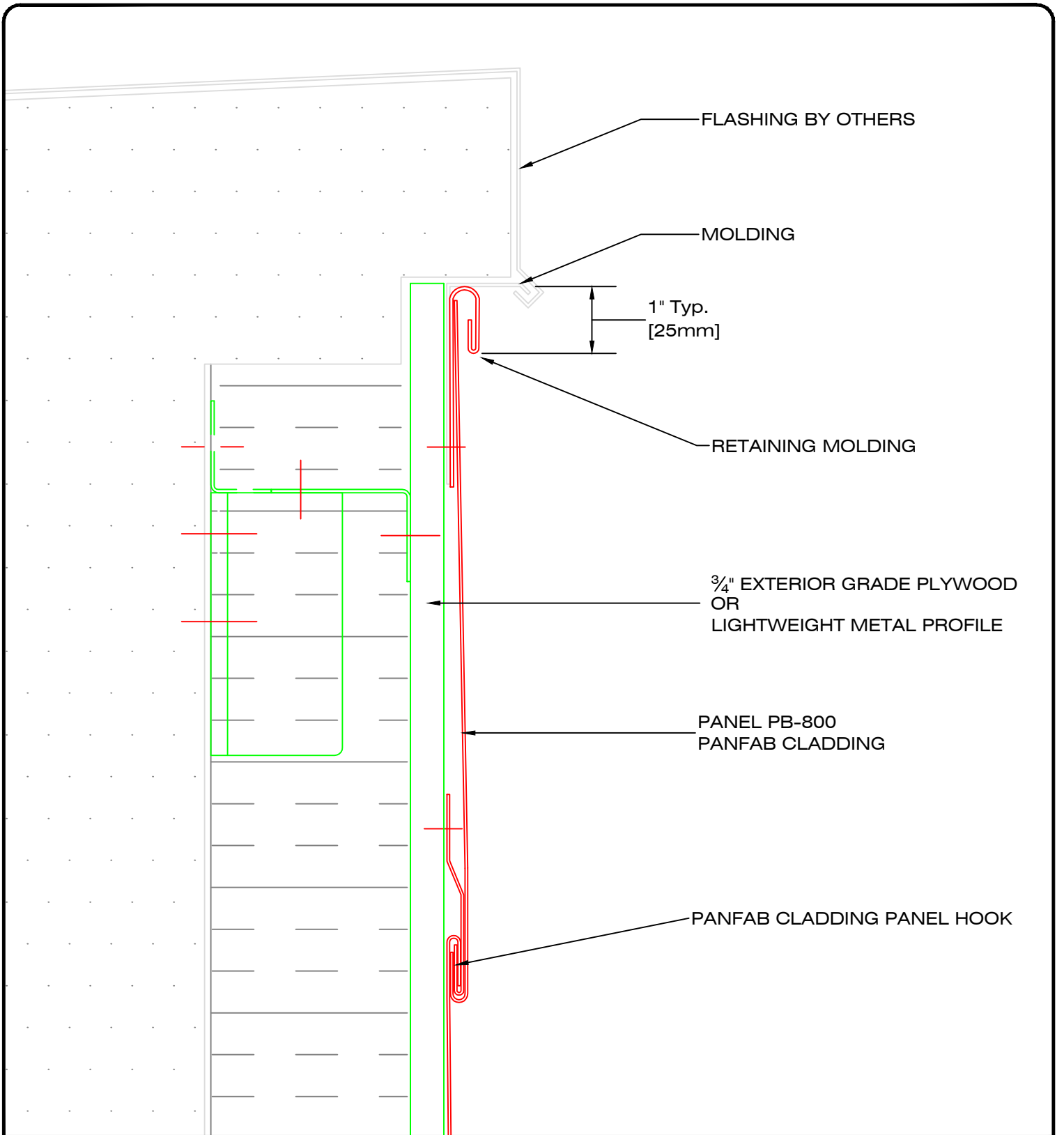


49, boul. de la Seigneurie Est
Blainville (Québec) J7C 4G6

Phone : (450) 430-3029

www.panfab.com

Project:		PB-800 PANFAB CLADDING	
Title:		SECTIONAL DETAIL - WINDOW LINTEL	
Scale:	1:2	Page:	820241
Date:	NOVEMBER 2025		

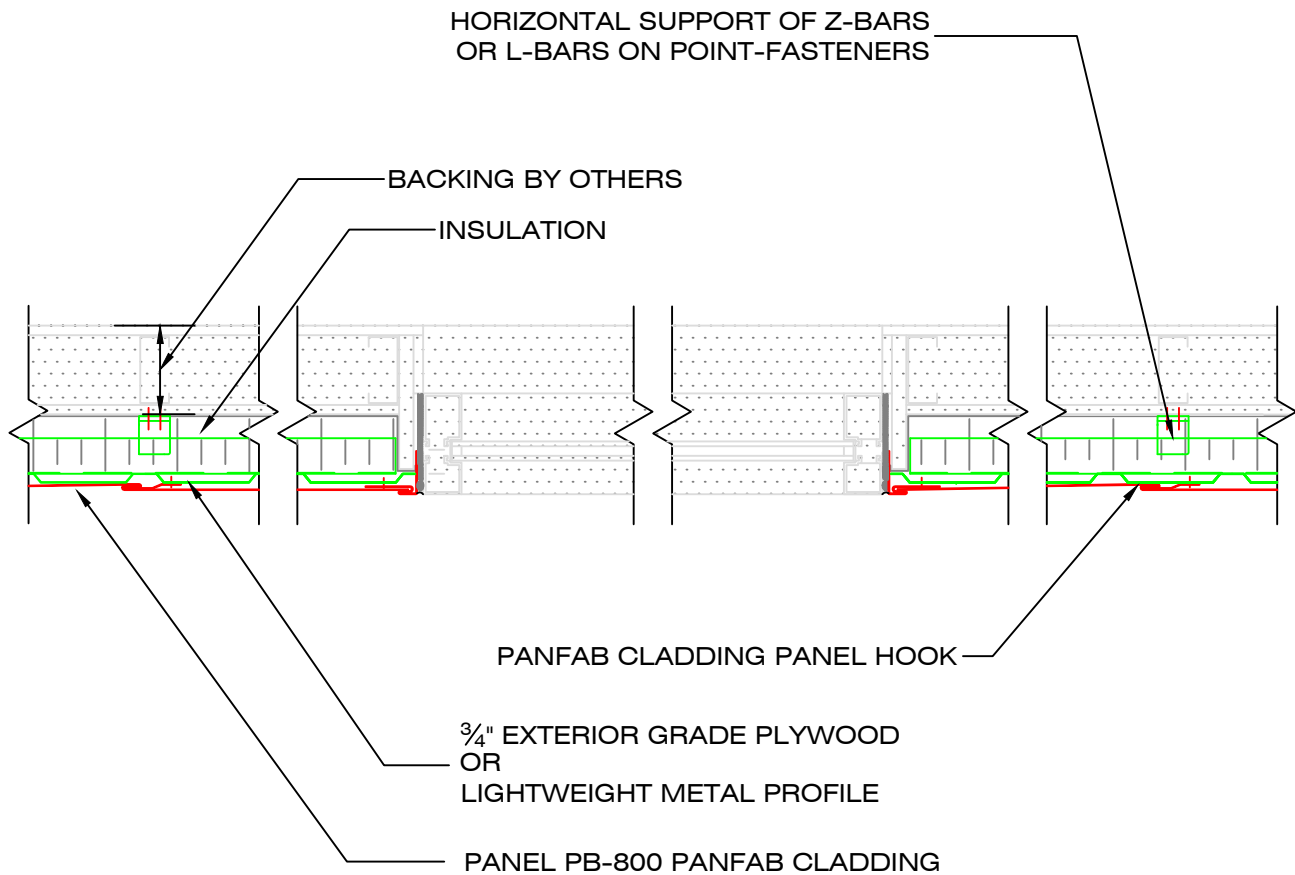


49, boul. de la Seigneurie Est
Blainville (Québec) J7C 4G6

Phone : (450) 430-3029

www.panfab.com

Project:		PB-800 PANFAB CLADDING	
Title:		SECTIONAL DETAIL - PARAPET	
Scale:	1:2	Page:	820250
Date:	NOVEMBER 2025		



49, boul. de la Seigneurie Est
Blainville (Québec) J7C 4G6

Phone : (450) 430-3029

www.panfab.com

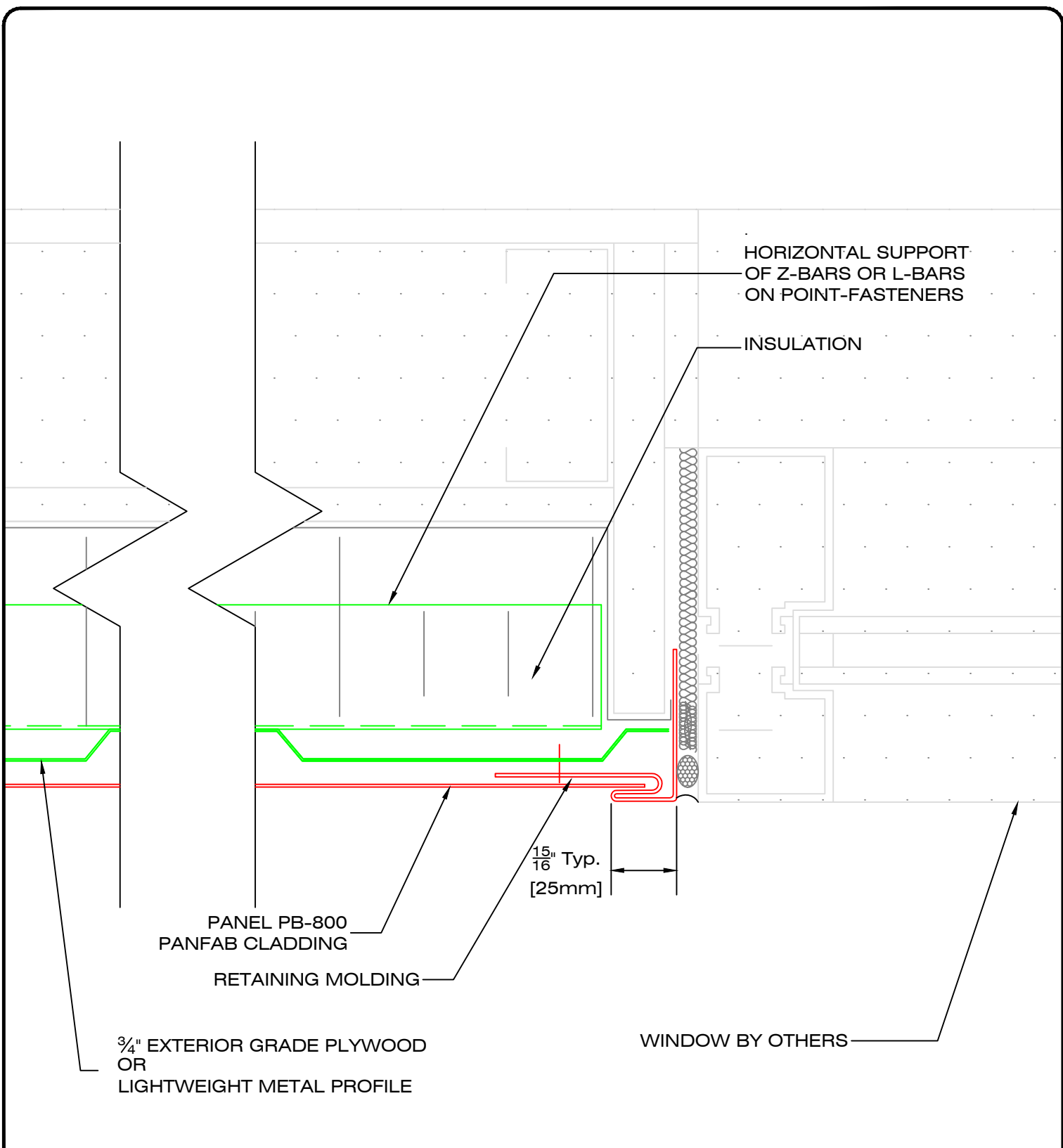
Project: PB-800 PANFAB CLADDING

Title: PLAN VIEW

Scale: 1:10

Date: NOVEMBER 2025

Page: 820300

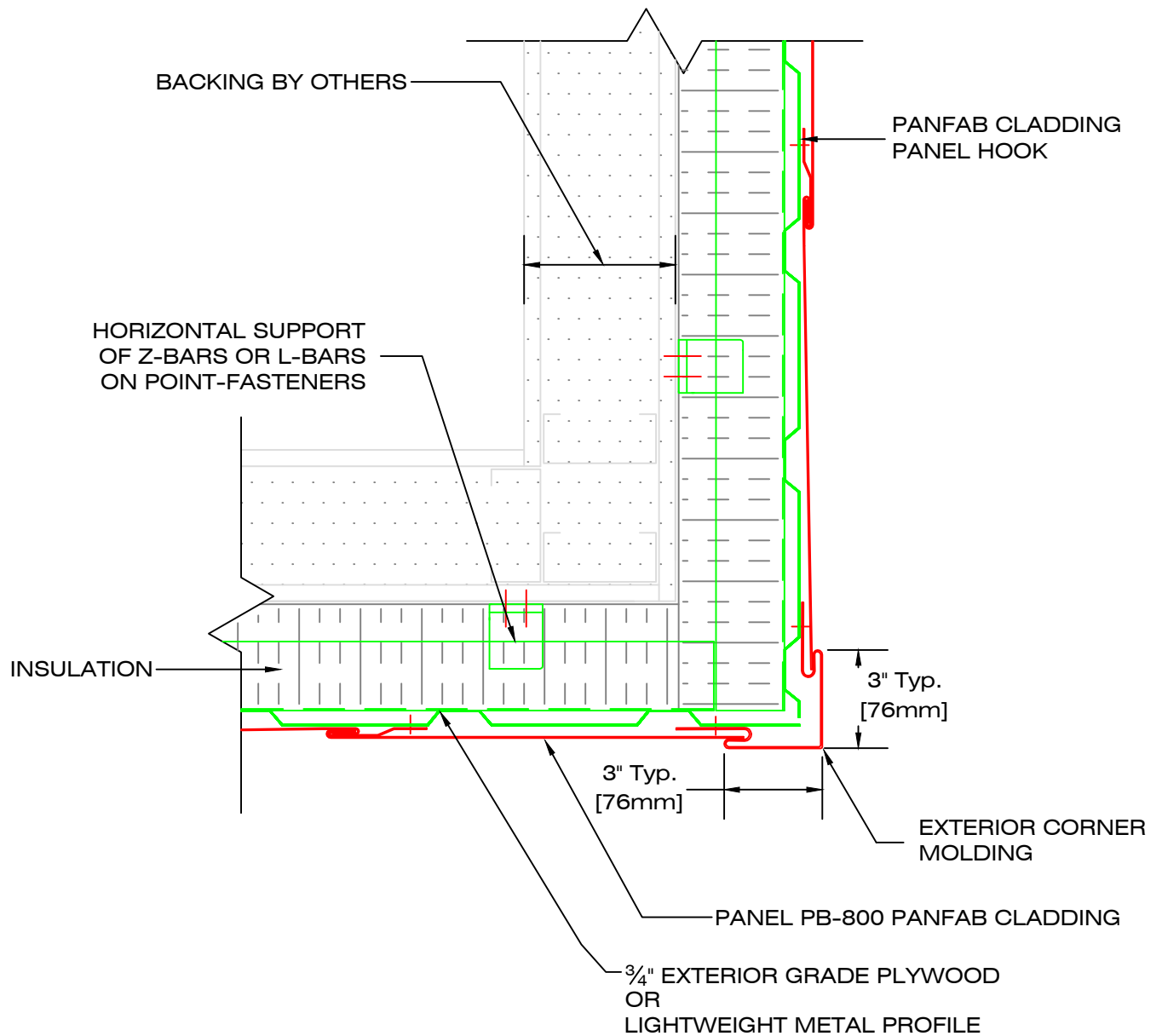


49, boul. de la Seigneurie Est
Blainville (Québec) J7C 4G6

Phone : (450) 430-3029

www.panfab.com

Project:		PB-800 PANFAB CLADDING	
Title:		PLAN DETAIL - JAMB AND WINDOW	
Scale:	1:2	Page:	820310
Date:	NOVEMBER 2025		

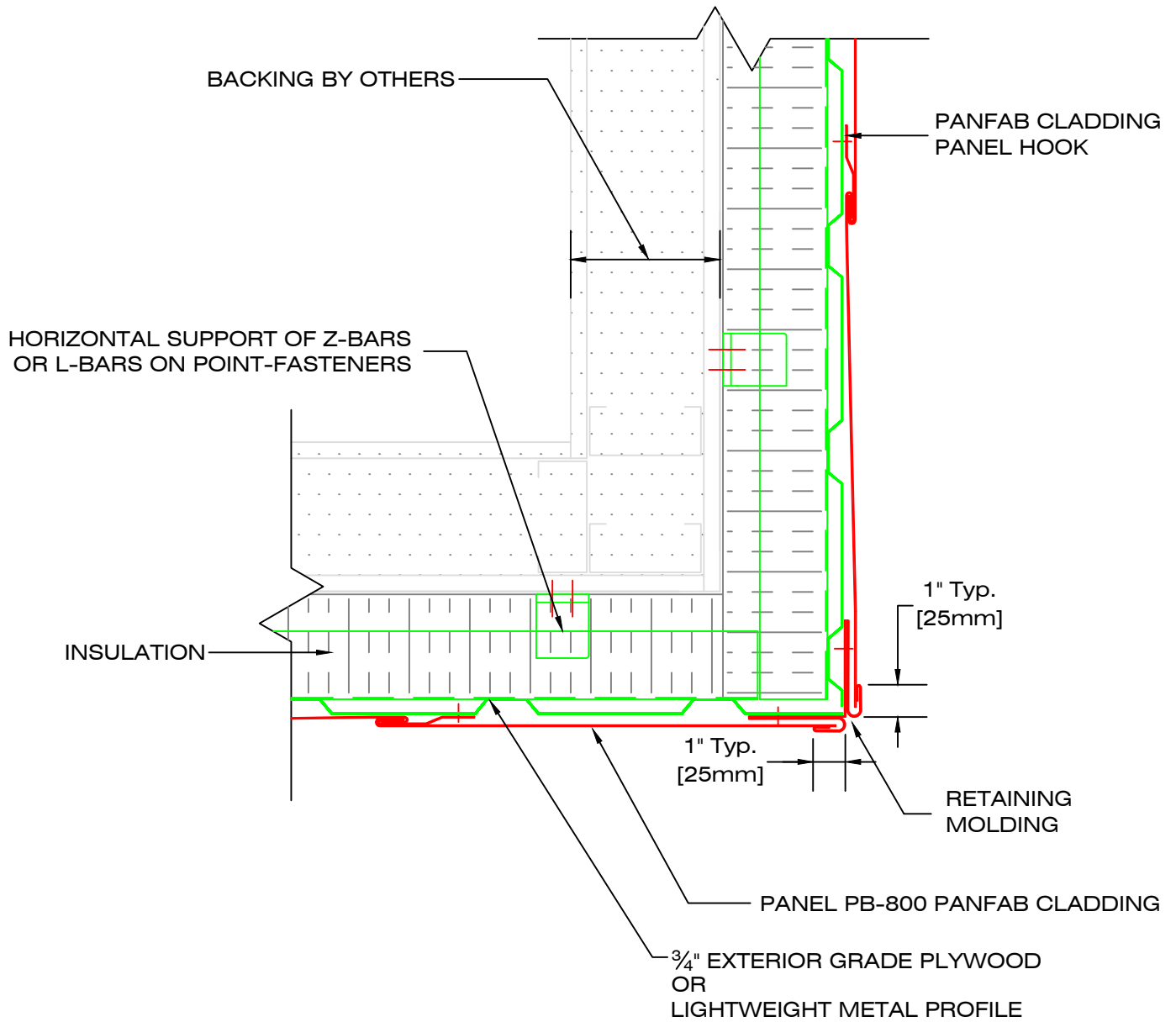


49, boul. de la Seigneurie Est
Blainville (Québec) J7C 4G6

Phone : (450) 430-3029

www.panfab.com

Project:		PB-800 PANFAB CLADDING	
Title:		PLAN DETAIL - OUTSIDE CORNER OPTION "A"	
Scale:	1:5	Page:	820320
Date:	NOVEMBER 2025		



49, boul. de la Seigneurie Est
Blainville (Québec) J7C 4G6

Phone : (450) 430-3029

www.panfab.com

Project:

PB-800 PANFAB CLADDING

Title:

PLAN DETAIL - OUTSIDE CORNER OPTION "B"

Scale:

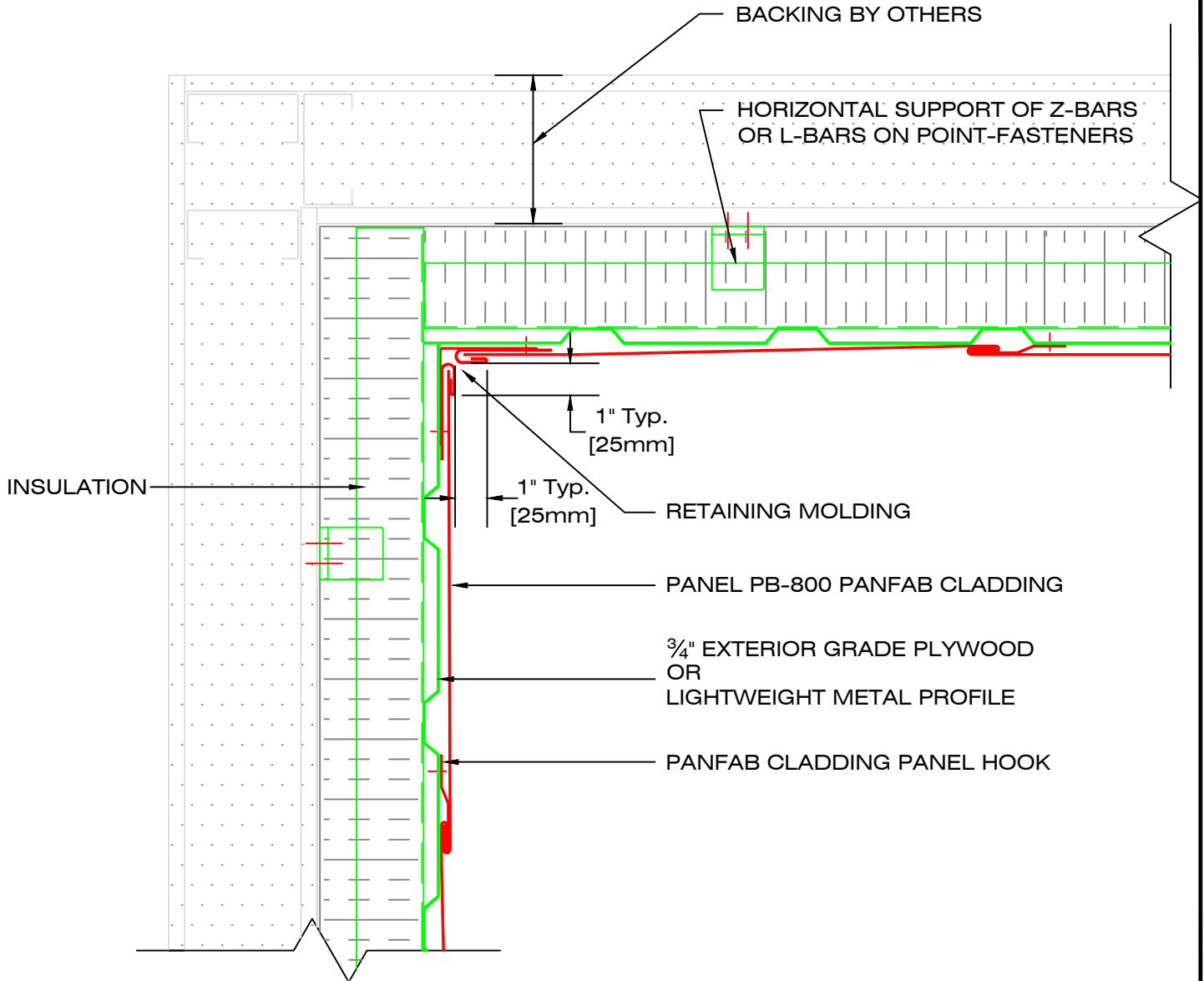
1:5

Page:

820321

Date:

NOVEMBER 2025



49, boul. de la Seigneurie Est
Blainville (Québec) J7C 4G6

Phone : (450) 430-3029

www.panfab.com

Project:

PB-800 PANFAB CLADDING

Title:

PLAN DETAIL - INTERIOR CORNER PANEL

Scale:

1:5

Page:

820330

Date:

NOVEMBER 2025